

POSTER STAMPS

GRAPHIC ARTISTS

'THE BEST OF THE REST'

Volume I – A to G



by

Charles Kiddle

(2011)

POSTER STAMPS
GRAPHIC ARTISTS : THE BEST OF THE REST*

VOL I : A to G

by

Charles Kiddle

(2011)

© Charles Kiddle 2011

Published by World Poster Stamps
PO Box 13, Alton, Hants, GU34 4DW, U.K.
e-mail : charleskiddle@btconnect.com

* In 2003, two volumes were published – 'THE TOP TWENTY ARTISTS'. These new 'BEST OF THE REST' catalogues add to these 2003 Catalogues. In addition, Catalogues exist for Ludwig HOHLWEIN and Kurt BÖTTCHER (2).

GRAPHIC ARTISTS : THE BEST OF THE REST

VOLUME I : A to G

CONTENTS

Poster Stamps pages i - ii

Introduction pages iii - iv

Artist Name	Page Number(s)	Artist Name	Page Number(s)
Leon AMAR	1 - 7	Edmund DULAC	87
Ezio ANICHINI	8 - 20	Jacob DURST	88
ATELIER LEFF	21 - 23	Rudolf DÜRRWANG	89 - 91
J AUER	24	Charles DUTT	92
Max AURICH	25 - 26	DWU	93 - 95
Ernst Hamlin BAKER	26 - 27	Rudolf EBERLE	96
Carl BERGMÜLLER	28	R EBERMAYER	97 - 99
D BIRTWIRT	28	Eduard EGE	100 - 102
Hans BERNHARDT	29	Hugo Max EICHLER	103
Vespasiano BIGNAMI	30	Georg EIERMANN	104
N BÖHMEN	30	ELIOS	104 - 105
Alfred BÖLD	31 - 33	V FAINI	106 - 107
Umberto BONETTI	34 - 35	F FALIANO	108
Fritz BUCHHOLZ	36	F FEGBEUTEL	109
Raymond BUCHS	37 - 43	Noël FONTANET	110
Leopold Moritz Karl CAPELLER	44 - 56	Fredrich K FRANCK	110 - 111
A M CASSANDRE	57	Hugo FRANK	112
A M CAY	58 - 61	Max Adolf Peter FREY	113 - 114
Berthold CLAUSS	62	Leonhard Friedrich Waldmar FRIES	114 - 120
P M CODOGNATO	63 - 65	A GARCIA	121
CHRISTMAN	66	E GARULLI	122 - 123
Theodor DAHLE	67	Kurt GLASER	124 - 125
John DAPE	68	Franz Paul GLASS	126 - 134
Pieter DAS	69 - 71	S GLAX	135
Francis B DELAMARE	72 - 76	Alfred GREINER	136
Franz Karl DELAVILLA	77 - 78	Anton GRIEB	136 - 137
DICIOLO	78	Alios GRUBER	138
Hans DIETRICH	79	Fritz GRUBER	139
Alex Walter DIGGELMANN	80	Theodor GRUST	139 - 141
Josef von DIVEKY	81	H GULFRID	141
Rudolf DIX	82 - 83	Hans GYENIS	142
Marcello Mailand J DUDOVITCH	84 - 86		

World Poster Stamps Catalogues pages 143 - 144

POSTER STAMPS
GRAPHIC ARTISTS : THE BEST OF THE REST

POSTER STAMPS

Many will ask 'what are poster stamps?' (typically, in French - vignettes and in German - Reklamemarken). The first aspect to mention is that they are not postage stamps but, as their name suggests, most look like stamps. They are called poster stamps because many are miniatures of actual posters and, with perforations, they can look like postage stamps.

The main purpose of poster stamps is to advertise a product or an event. They have proved to be a very powerful medium. Poster stamps have been issued for reasons including political purposes, to get a message across and to raise money for good causes.

Most collectors, especially philatelists, have not seen nor know of poster stamps and a typical reaction on seeing them for the first time is 'wow'.

In the UK, since 1959, collectors of poster stamps have been members of the Cinderella Stamp Club. 'Why Cinderella?' is an often asked question. Until recently, collectors of poster stamps and, indeed, revenues, local issues, bogus issues, etc. wishing to display their collections at national or international philatelic exhibitions could not do so - they were excluded 'from the ball'. Happily, this has changed and poster stamps can be displayed in both the Open and Social Philately Classes.

Poster stamps have a long and interesting history. Poster stamps began to appear during the last decade of the 19th Century although there are a few earlier examples. In these early years, especially in Europe and the USA, poster stamps were issued to advertise exhibitions. The 'bible' for early exhibition poster stamps is the 1914 Cazin & Rochas *Timbres Commémoratifs* catalogue. In that catalogue, the earliest recorded poster stamp is 1845. The golden era was from 1900 to 1914. The 1900 Paris Exposition resulted in an explosion of poster stamps (see the appropriate World Poster Stamp Catalogue). In 1913, the information is that 50,000 different were produced in Germany alone. The First World War ended the era and whilst poster stamps have continued to be produced to this day, it has been at a much lower level.

In this golden era, arguably there were more poster stamp collectors than postage stamp collectors. There were 1,000s of different purpose designed albums, especially in Germany. There were poster stamp clubs - over 1,000 in the USA alone - there were poster stamp exhibitions and there were many poster stamp dealers. Imagine the scale of the industry, the designers, the printers, the commercial organisations, etc. involved in poster stamps. At this time there was no radio and no television.

Poster stamps proved to be the ideal medium to get across the message. They were small, attractive, readily available, and very collectable. They were affixed to envelopes and invoices, they were given away with products

POSTER STAMPS
GRAPHIC ARTISTS : THE BEST OF THE REST

POSTER STAMPS

Many will ask 'what are poster stamps?' (typically, in French - vignettes and in German - Reklamemarken). The first aspect to mention is that they are not postage stamps but, as their name suggests, most look like stamps. They are called poster stamps because many are miniatures of actual posters and, with perforations, they can look like postage stamps.

The main purpose of poster stamps is to advertise a product or an event. They have proved to be a very powerful medium. Poster stamps have been issued for reasons including political purposes, to get a message across and to raise money for good causes.

Most collectors, especially philatelists, have not seen nor know of poster stamps and a typical reaction on seeing them for the first time is 'wow'.

In the UK, since 1959, collectors of poster stamps have been members of the Cinderella Stamp Club. 'Why Cinderella?' is an often asked question. Until recently, collectors of poster stamps and, indeed, revenues, local issues, bogus issues, etc. wishing to display their collections at national or international philatelic exhibitions could not do so - they were excluded 'from the ball'. Happily, this has changed and poster stamps can be displayed in both the Open and Social Philately Classes.

Poster stamps have a long and interesting history. Poster stamps began to appear during the last decade of the 19th Century although there are a few earlier examples. In these early years, especially in Europe and the USA, poster stamps were issued to advertise exhibitions. The 'bible' for early exhibition poster stamps is the 1914 Cazin & Rochas *Timbres Commémoratifs* catalogue. In that catalogue, the earliest recorded poster stamp is 1845. The golden era was from 1900 to 1914. The 1900 Paris Exposition resulted in an explosion of poster stamps (see the appropriate World Poster Stamp Catalogue). In 1913, the information is that 50,000 different were produced in Germany alone. The First World War ended the era and whilst poster stamps have continued to be produced to this day, it has been at a much lower level.

In this golden era, arguably there were more poster stamp collectors than postage stamp collectors. There were 1,000s of different purpose designed albums, especially in Germany. There were poster stamp clubs - over 1,000 in the USA alone - there were poster stamp exhibitions and there were many poster stamp dealers. Imagine the scale of the industry, the designers, the printers, the commercial organisations, etc. involved in poster stamps. At this time there was no radio and no television.

Poster stamps proved to be the ideal medium to get across the message. They were small, attractive, readily available, and very collectable. They were affixed to envelopes and invoices, they were given away with products

POSTER STAMPS
GRAPHIC ARTISTS : THE BEST OF THE REST

and they were collected to obtain other rewards. A good example is Sainsbury's (the U.K. supermarket retailer) where poster stamps were issued in 1913 together with an album. When the album was complete, it was to be returned to Sainsbury's who exchanged it for cut out cardboard animals!

The biggest companies were able to issue their own poster stamp albums. Other traders commissioned designers and printers to prepare their own poster stamps. Small traders had to select from 1,000s of standard poster stamp designs and have their own details printed or stamped in a blank box. Most major postage stamp dealers, including Stanley Gibbons, produced their own poster stamps advertising their businesses. They issued exhibition poster stamps as a 'new issue' service.

Although 100,000s were issued, it is difficult to find 'good' poster stamps today, especially those rated scarce to rare. Where to find them, what do they cost and are there any catalogues are three typical questions. In short, the answers are : yes there are a few dealers but not stamp dealers and, of course, there are specialist societies; yes there are catalogues, some very good catalogues, but they touch upon only a small aspect of poster stamps. Recently, the number of catalogues about poster stamps has increased year on year. The best known book about poster stamps is *'Lick 'Em Stick 'Em The Lost Art of Poster Stamps'* by H. Thomas Steele, published in the USA in 1989 and sales in excess of 20,000 have been reported. Interestingly, a catalogue of the poster stamps in *'Lick 'Em Stick 'Em'* has been published in the USA.

A question you will ask yourself is 'should I collect poster stamps'? Whilst it is, as always, down to individual choice, for many reasons the answer is 'yes'. Reasons include:

- posters cost from £100s to £10,000s but poster stamps are, typically, £1+;
- poster stamps are attractive - to be looked at time and time again;
- many poster stamps are by such acknowledged masters of design as Hohlwein, Bernhard, Deutsch, Erdt, Mucha, Parrish, Penfield, Cassandre, and Mauzan;
- poster stamps are THE medium for thematics (topicals);
- poster stamps enhance almost all collections - popular aspects are aviation, specific towns or countries, political, social or product development, etc.

The specialist Society addresses include:

The Cinderella Stamp Club, 1 Keystone Gardens, Ludlow, Salop, SY8 1LE, U.K.
L'Arc en Ciel, 7, Boulevard Voltaire, 92130 Issy-Les-Moulineaux, Paris, France.
Erinnophile International, Alberada Str. 13, D-96231 Staffelstein, Germany.
The Poster Stamp Society, 3654 Upper Applegate Road, Jacksonville, Oregon 97530, USA.
The Poster Stamp Collectors Club, PO Box 208, Ark, VA 23003, USA.

**POSTER STAMPS
GRAPHIC ARTISTS : THE BEST OF THE REST**

INTRODUCTION

1. World Poster Stamps (WPS) has, to date, published some 30 catalogues. For each, the decision has been taken to publish a catalogue with all known poster stamps in full colour and at actual size. Graphic design is an important aspect and this can best be seen at full size. This, inevitably, results in a high cost price and, therefore, a high selling price. Not that it matters an iota but even with a 'high' selling price, no WPS catalogue has made a 'profit'. What authors have to accept is that most poster stamp collectors do not buy catalogues. If 10,000 copies of a book were printed, the published price would be 'reasonable'. However, typically, 30 copies of a WPS catalogue are sold and UK Law requires 6 of those to be given free to the State. Again, not that it matters, but those criticising the published price of a Catalogue should ask themselves why no more than one or two people have published catalogues of poster stamps in colour. The answer, in part, is the requirement of a 'large collection', world wide visits to collectors, years to compile any such catalogue, help from a range of good people, three to six months work to publish any catalogue, a large initial investment and the outcome is a loss!

2. This Catalogue – **'POSTER STAMPS – GRAPHIC ARTISTS – THE BEST OF THE REST'** – is the first of a planned series of catalogues to add to the two volume Catalogue : **'POSTER STAMPS : THE 'TOP TWENTY' GRAPHIC ARTISTS'** published in 2003. Those graphic artists who have more than three different designs will be one series of Catalogues, of which this is the first. There will be one other Catalogue (or, perhaps two Catalogues) entitled **'POSTER STAMPS : GRAPHIC ARTISTS : THE BEST OF THE REST : ONE, TWO OR THREE DESIGNS'**. To include these smaller quantities of poster stamps in the former Catalogue would add considerably to the number of Catalogues in the series.

3. Of course, in selecting graphic artists in **'GRAPHIC ARTISTS : THE BEST OF THE REST'** there has to be a degree of personal judgement. In addition, the following have been excluded :

- a. graphic artists who have produced a small number of excellent designs but these few designs are swamped by numerous others which have little graphic merit;
- b. any Swiss soldier 'stamp' even if the graphic artist is included.

4. Each of these proposed Catalogues is a mammoth task. As indicated above, there has been a 20+ year gestation period. There is an argument not to publish unless all known poster stamps can be illustrated and described. However, if despite the help of many good people and collectors, additions are minimal for, perhaps, a two year period, then it seems appropriate to publish the known information.

5. The author is English and not German and, therefore, lacks much background information and a full, proper, historical context - see 'THANKS' later. However, most collectors want to see and know of the images and the Catalogue is sufficient for that purpose.

6. RARITY AND PRICE

For all WPS listed poster stamps, two of the most difficult aspects are 'rarity' and 'price'. As indicated above, this Catalogue is the result of 20+ years of dedicated collecting. In that period, whilst the number of collectors has increased, overall,

**POSTER STAMPS
GRAPHIC ARTISTS : THE BEST OF THE REST**

world wide the total is small. If the number were to increase marginally, the demand, even for 'scarce' poster stamps, would exceed supply. In these Catalogues are many poster stamps which are, on available evidence, 'unique'. Perhaps only one or two copies (are known to) exist for others. If these were postage stamps and not poster stamps, their value would be in £1,000s if not more. As with all other WPS catalogues '100' does not equate to £100 or \$100 or Euros 100. The use of a 'rarity scale' permits the use of the Catalogues for decades to come and across the collecting world. If one has paid a sum of money for a listed poster stamp or if one values a poster stamp at a 'price' then the 'Rarity scale' will permit

a) an appreciation of both that poster stamp in relationship to others and b) a reasonable price that could be paid.

7. THE LAYOUT AND CONTENT OF THE CATALOGUE

As with other most recent WPS Catalogues, the approach has been to put, as far as it is possible, the text on the page with the image. Unique Catalogue Numbers have been allocated to all the poster stamps and their variants. As with many poster stamps, if the final version was perforated then it is likely to have been the case that imperforate (progressive) proofs (suffix 'P') were printed as part of the design and printing process. Where an imperforate variant is known it is indicated with a suffix 'I'. If a 'Rarity' rating is not detailed then, typically (but not exclusively) 50% can be added to the 'Rarity' for an imperforate poster stamp and 100% for a 'proof..

8. WHY CATALOGUES?

A major reason why this and other catalogues are being published is to answer one of the two most often asked questions in respect of poster stamps i.e. 'is there a catalogue'. Sadly, no matter how many catalogues are published, they cannot often answer the second of the most often asked questions 'where can I buy them'. If nothing else, the Catalogue may assist with the second question in that at least the reader, collector, etc. knows what he / she does not have and what to ask for if a dealer can be found. At any one time, the Internet may detail 100,000s of poster stamps but 99+% are 'common'.

9. THANKS

No World Poster Stamps Catalogue would be possible without the help of a few dedicated poster stamp collectors. Many have helped and their help is gratefully acknowledged. Particular thanks go to, in alphabetical sequence : Alfons Brunner, Jaap van Dijk and Peter-Hannes Lehmann.

Those named and many others have helped. Their help has been voluntary and to assist with the recording of information for collectors now and for future collectors of poster stamps.

Leon AMAR

(1887-?)



Cat. No.	R	Cat. No.	R	Cat. No.	R	Cat. No.	R
AM1.1.1	60	AM1.2.1	60	AM1.3.1	60	AM1.4.1	60
AM1.5.1	100	AM1.6.1	60	AM1.5.2	80	AM1.3.2	80
AM1.7	300			AM1.8	300	AM1.9	300

Notes :

- only two examples are illustrated of AM1._2 : they are numbered '3' and '5' : '1', '2', '4' and '6'. must (have) exist(ed);
- AM1.7 – AM1.9 are so rare they are not listed in the BERLIN Catalogue.



Cat. No.	R	Cat. No.	R	Cat. No.	R	Cat. No.	R
AM1.10	60	AM1.11	60	AM1.12	60	AM1.13	60
AM1.14	60	AM1.15	60	AM1.16	60	AM1.17	60
AM1.18	60	AM1.19	60			AM1.20a	40

Note : AM1.20 :

suffix	Colour text at top & bottom	Colour of monogram	suffix	Colour text at top & bottom	Colour of monogram
a	blue	pink / red	d	blue	yellow
b	pink / red	pale pink	e	yellow	blue
c	pink / red	blue	f	yellow - brown	blue



Cat. No.	R	Cat. No.	R	Cat. No.	R
AM1.21	40	AM1.22	40	AM1.23	40
AM1.24	40	AM1.25	40	Note 2.	40
AM1.27	40	AM1.28	40	AM1.31a	60
AM1.29	40	AM1.30	40	AM1.32a	60

Notes :

1. AM1.21 - .25 (and G.COLE) : there are different shades of the green and orange;
2. this poster stamp, which completes the set, was designed by an American graphic artist – George COLE;
3. AM1.27 - .30 in a block (as illustrated) 'Rarity' 160;
4. AM1.31 & .32 : background 'a' = blue; 'b' = green.



Cat. No.	R	Cat. No.	R	Cat. No.	R
AM1.33I	300	AM1.34	100	AM1.35	30
		AM1.36	200	AM1.37	40
AM1.38I	10	AM1.39I	10	AM1.40I	10

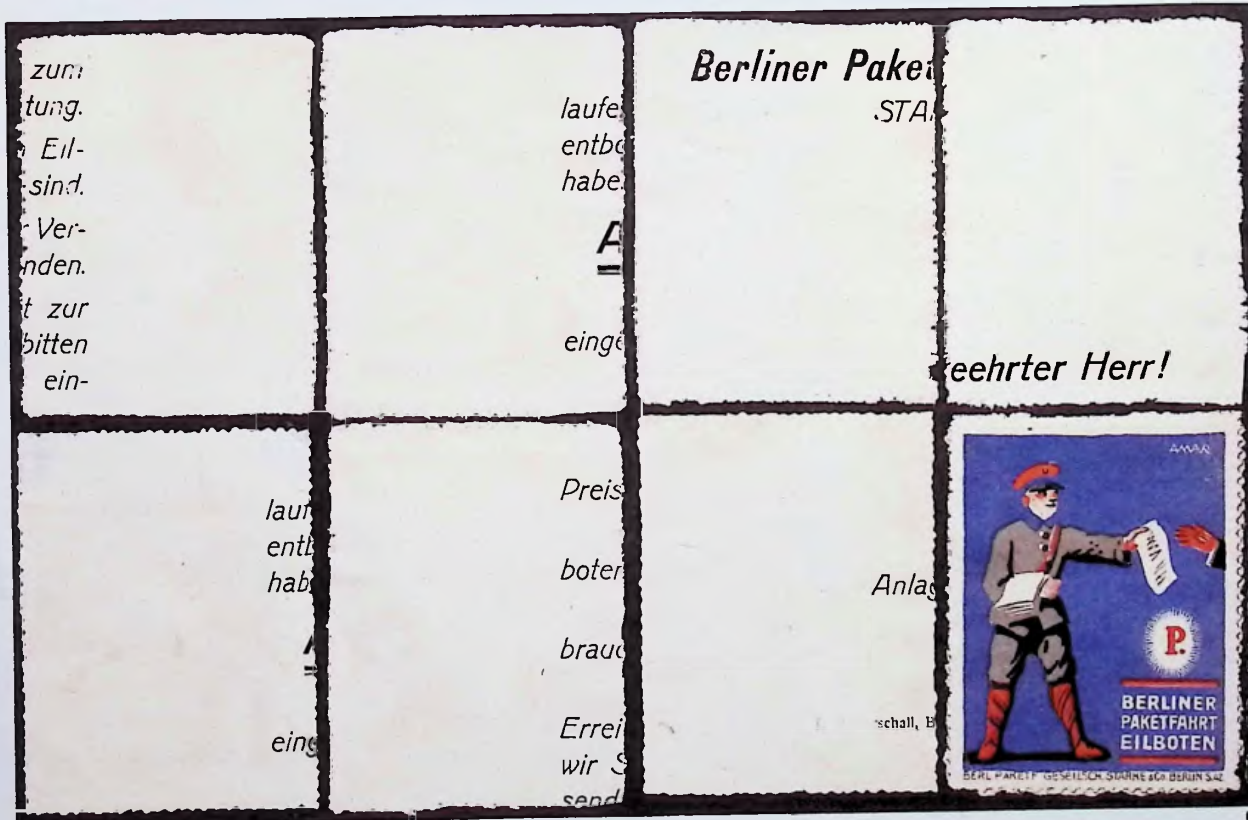
Note : AM1.36 and .37 were produced in Great Britain.



Cat. No.	R	Cat. No.	R	Cat. No.	R	Cat. No.	R
AM1.41	40	AM1.42	40	AM1.43	40	AM1.44	40
AM1.45	40	AM1.46	40	AM1.47	40	AM1.48	40
AM1.49	40	AM1.50	40	AM1.51	40	AM1.52	40

Notes :

1. there are 15 in the 'set' and it continues on the next page;
2. as can be seen, there are 'SERIE I : No. 1 - 5' ; 'SERIE 2 : No. 1 - 5' and 'SERIE 3 : No. 1 - 5'.



Cat. No.	R	Cat. No.	R	Cat. No.	R	Cat. No.	R
AM1.53	40	AM1.54	40			AM1.55	40
Note 1.	40	Note 1.	40	Note 1.	40	Note 1.	40
Note 1.	40	Note 1.	40	Note 1.	40	AM1.56	40

Notes :

1. the status of these 'poster stamps' is unknown : they are without gum, have thicker paper and, as can be seen, some have partial text on the reverse : known are SERIE 1 : No. 2 - 5' and 'SERIE 2 : No. 1 - 5';
2. AM1.56 has the same perforations and paper but whilst appearing to be from the same series, the design is not included in SERIE 1, SERIE 2 or SERIE 3.

POSTER STAMPS - GRAPHIC ARTISTS - THE BEST OF THE REST



Cat. No.	R	Cat. No.	R	Cat. No.	R	Cat. No.	R
AM1.57l	30	AM1.58l	30	AM1.59l	30	AM1.60l	30
AM1.61al	30	AM1.61bl	40	AM1.61cl	40	AM1.61dl	40
AM1.62l	30						



Ezio ANICHINI

Cat. No.	R	Cat. No.	R	Cat. No.	R
AN1.1a	60	AN1.2a	60	AN1.3Aa	30
AN1.1a	60	AN1.2a	60	AN1.3Ba	30

Notes :

1. AN1.1 & .2 : the sheet is AN1.1a SHEET – the 'Rarity' is 400;
2. AN1.1 & .2 : colours include : 'a' = deep brown & blue-green; 'b' = red brown & green; 'c' = grey & orange; 'd' = deep brown & orange 'e' = green & deep brown; 'f' = grey-blue & violet-black; 'g' = pale brown & blue-green;
3. similar sheets must (have) exist(ed) for all colour combinations – for all add suffix SHEET;
4. AN1.3A and .3B : colours include : 'a' grey-blue; 'b' = green (shades); 'c' = brown; 'd' = red; 'e' blue; 'f' = orange; 'g' = pink.

POSTER STAMPS – GRAPHIC ARTISTS – THE BEST OF THE REST

AN1.4 - .9 have a wide range of colours, coloured papers + perf. and imperforate (IMP) variants. To avoid 6 large tables, the following composite table has been used. The 'Rarity' is 60 for all perf. poster stamps on white paper, 80 for coloured papers and 100 for all imperforate variants. All are Red Cross & TB designs. 'a' – 'f' are on white paper. 'y' is 'seen'. 'e' = listed but not seen. AN7.9f) exists - missing red (cross). Others may exist. 'Rarity' 150. imp = imperforate – add suffix 'l' after colours alpha. suffix.

suffix	colours	AN1.4	.5	.6	.7	.8	9
a	black & red	y	e	y	y	y	y
b	deep green & red	y	y	y	e	y	y
c	deep blue & red	e	y	y	e	y	y
d	deep violet & red	y	y	y	y	y	y
e	deep brown & red	y	y	y	y	y	y
f	sienna & red	y	y	y	y	y	y
g	deep blue & red on pale blue paper		y	y			y
h	black & red on pale blue paper				e	e	
j	deep green & red on pale blue paper				e		
k	brown & red on pale blue paper						e
m	black & red on yellowish paper		e				
n	deep blue & red on yellowish paper		e	e			
o	black & red on yellowish paper		e				
p	black & red on pale grey paper			e	e		
q	deep blue & red on pale grey paper				e		e
r	deep violet & red on pale grey paper				e		
s	deep green & red on pale grey paper					e	
t	sienna & red on pale grey paper						e
u	red & black on light blue paper imp	e					
v	sienna & red on light blue paper imp	e					
w	blue-grey & red on white paper imp		y				
x	sienna & red on white paper imp			y			y
y	deep brown & red on white paper imp						e
z	brown only on white paper imp						y
aa	deep green on white paper imp						y
bb	violet & red on pale blue paper imp			y			
cc	deep brown & red on pale blue paper imp						e
dd	deep green & red on pale blue paper imp				e		y
ee	violet & red on yellowish paper imp			e			
ff	deep blue & red on yellowish paper imp		e				
gg	deep green & red, yellowish paper imp	e					
hh	deep violet & grey on pale grey paper imp						e
jj	deep green & red on pale grey paper imp			e		e	
kk	sienna & red on grey paper imp			e			

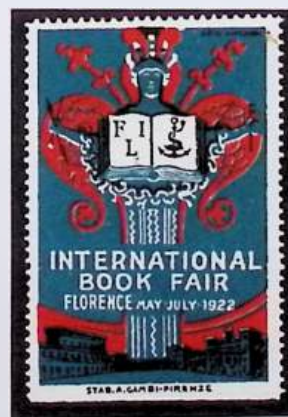
Note : 'sienna' has been taken to be 'pale chestnut brown'.

AN1.10

suffix	colours	an1.4
a	black & red	y
b	deep green & red	y
c	deep green & red on white paper imp	e
d	deep blue & red	y
e	deep violet & red	y
f	deep brown & red	y
g	sienna & red	e
h	deep violet & red on pale blue paper	e
j	black & red imp	y
k	deep green on blue paper imp	e
m	deep brown & red on blue paper imp	e

Note : 'y' is 'seen'. 'e' = listed but not seen. imp = imperforate – add suffix 'l' after colour (combination) alpha. suffix.

THE POSTER STAMPS ARE ILLUSTRATED AT THE NEXT PAGE.



Cat. No.	R	Cat. No.	R	Cat. No.	R	Cat. No.	R
AN1.4a	60	AN1.5g	60	AN1.6b	60	AN1.7f	60
AN1.8aa	100	AN1.9c	60			AN1.10e	60
AN1.11	20	AN1.12a	30			AN1.13c	30

Notes :

1. AN1.12 : black text : 'a' = green; 'b' = black; 'c' = blue;
2. AN1.13 : 'a' = French text; 'b' = Italian and 'c' = English text.



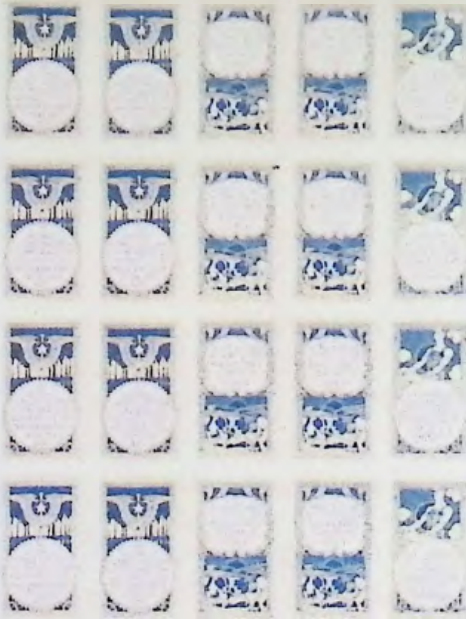
Cat. No.	R	Cat. No.	R	Cat. No.	R	Cat. No.	R	Cat. No.	R
AN1.14a	40	AN1.15a	40	AN1.16a	40	AN1.17a	40	AN1.18a	40
AN1.19a	40	AN1.20a	40	AN1.21a	40	AN1.22a	40	AN1.23a	40

Note : the following colour variations have been seen – the paper is white (or shades thereof) for all colour variants except 'q' – deep brown on pink paper :

suffix	colour	colour	suffix	colour	colour
a	blue		j	purple brown	
b	red violet		k	black	
c	brown		l	red-pink	
d	brown	cream	m	green	
e	green		n	violet	yellow
f	green	deep blue	o	red-pink	blue
g	green	violet	p	violet	cream
h	violet		q	deep brown	see above

POSTER STAMPS – GRAPHIC ARTISTS – THE BEST OF THE REST

Poster stamps in the range AN1.14 – AN1.23 can be found in different sheet formats.
Below are three examples reduced by 50% to fit the page.



FRANCOROLLI DI PROPAGANDA ITALIANA - Cent. 5 cad.



FRANCOROLLI DI PROPAGANDA ITALIANA - Cent. 5 cad.



FRANCOROLLI DI PROPAGANDA ITALIANA - Cent. 5 cad.



Cat. No.	R	Cat. No.	R	Cat. No.	R	Cat. No.	R	Cat. No.	R
AN1.24a	40	AN1.25a	40	AN1.26a	40	AN1.27a	40	AN1.28a	40
AN1.29a	40	AN1.30a	40	AN1.31a	40	AN1.32a	40	AN1.33a	40

Note : the following colour variations have been seen :

suffix	colour	paper
a	blue	on toned paper
b	chocolate brown	white
c	green	white
d	brown orange	white
e	black	pink
f	red	white

Cat. Nos. AN1.34 - .53

The next 20 designs exist in three formats. These formats are :

Type 1 : Suffix 'A'



Type 2 : Suffix 'B'

Type 3 : Suffix 'C'



The 20 images are common to all three formats. Using the complete block at the next page but one, the Catalogue Numbers are as follows : the page is 'portrait' and the block 'landscape' so the numbers are at 90 degrees to the illustration i.e. 4 x 5 and not 5 x 4. The following table does not include 1. the appropriate lower case colour suffix and 2. the 'Type'.

Cat. No.	Cat. No.	Cat. No.	Cat. No.
AN1.34	AN1.35	AN1.36	AN1.37
AN1.38	AN1.39	AN1.40	AN1.41
AN1.42	AN1.43	AN1.44	AN1.45
AN1.46	AN1.47	AN1.48	AN1.49
AN1.50	AN1.51	AN1.52	AN1.53

The colours of Types 1, 2 and 3 are as follows with the lower case alpha. colour suffixes.

Type 1 (suffix 'A') : ignoring the green and red lines at the left :

Colour suffix	Colour	Colour suffix	Colour
a	blue-green	d	grey-brown
b	pale grey violet	e	black
c	bright violet		

Notes :

1. all the poster stamps have the vertical green (white) & red (the Italian national colours) lines at the left;
2. no separate Cat. No. has been allocated for poster stamps with one or two imperf. sides – see illustration of Type 1 in a full sheet (reduced size) at page 17;
3. the 'Rarity' of each is 80 but 100 for AN1.41_A (Red Cross) and AN1.42_A (aviation);

Type 2 (suffix 'B') :

Colour suffix	Colour	Colour suffix	Colour
a	blue	c	grey-brown
b	red	d	green

4. Note : the 'Rarity' of each is 60 but 80 for AN1.41_B (Red Cross) and AN1.42_B (aviation);

Type 3 (suffix 'C') :

Colour suffix	Colour	Colour suffix	Colour
a	brown	c	violet
b	blue	d	claret (red)

5. Note : the 'Rarity' of each is 40 but 60 for AN1.41_C (Red Cross) and AN1.42_C (aviation);

NOTE : examples of Type 2 have been seen imperforate but all appear to be perforated poster stamps with the perforations cut off.

The next five pages detail and illustrate the three types :

Type 1 : suffix A :

Given the size of the sheet, the illustration is reduced. As can be seen, the sheet is of 24 poster stamps. The bottom four poster stamps in the third row are second examples of AN1. , AN1. , AN1. and AN1.

The Catalogue Numbers of the 20 different Type A poster stamps are (_ = the colour code) :

Cat. No.	Cat. No.	Cat. No.	Cat. No.
AN1.34 A	AN1.35 A	AN1.36 A	AN1.37 A
AN1.38 A	AN1.39 A	AN1.40 A	AN1.41 A
AN1.42 A	AN1.43 A	AN1.44 A	AN1.45 A
AN1.46 A	AN1.47 A	AN1.48 A	AN1.49 A
AN1.50 A	AN1.51 A	AN1.52 A	AN1.53 A

As the poster stamps are in the sheet format, the Catalogue Numbers are :

Cat. No.	Cat. No.	Cat. No.
AN1.37 A	AN1.45 A	AN1.53 A
AN1.36 A	AN1.44 A	AN1.52 A
AN1.35 A	AN1.43 A	AN1.51 A
AN1.34 A	AN1.42 A	AN1.50 A
AN1.41 A	AN1.49 A	AN1.36 A
AN1.40 A	AN1.48 A	AN1.35 A
AN1.39 A	AN1.47 A	AN1.34 A
AN1.38 A	AN1.46 A	AN1.37 A

Type 2 : suffix B :

First page

Second page

Cat. No.	Cat. No.	Cat. No.	Cat. No.
AN1.34cB	AN1.35cB	AN1.36cB	AN1.37cB
AN1.38cB	AN1.39cB	AN1.40cB	AN1.41cB
AN1.42cB	AN1.43cB	AN1.44cB	AN1.45cB
AN1.46cB	AN1.47cB	AN1.48cB	AN1.49cB
AN1.50cB	AN1.51cB	AN1.52cB	AN1.53cB

Note : AN1.39cB, AN1.41cB, AN1.49cB and AN1.53cB are not illustrated.

Type 3 : suffix C

Cat. No.	Cat. No.	Cat. No.	Cat. No.
AN1.34aC	AN1.35aC	AN1.36aC	AN1.37aC
AN1.38aC	AN1.39aC	AN1.40aC	AN1.41aC
AN1.42aC	AN1.43aC	AN1.44aC	AN1.45aC
AN1.46aC	AN1.47aC	AN1.48aC	AN1.49aC
AN1.50aC	AN1.51aC	AN1.52aC	AN1.53aC



See a previous page for the Cat. Nos. of these 'Type 1' (suffix A) poster stamps.



No illustration is available

No illustration is available



No illustration is available

No illustration is available



No illustration is available

„Dardi Accesi,, Serie 2 - Francobolli di PROPAGANDA ITALIANA Cadauno CINQUE Cent.

Type 3
suffix C
colour 'a'





ATELIER LEFF

Cat. No.	R	Cat. No.	R	Cat. No.	R
AT1.1	40	AT1.2	40	AT1.3	40
AT1.4	40			AT1.5	40
AT1.6	100	AT1.7	100	AT1.8I	100

Note : the above can be found on 'cream' and 'white' papers – no separate Catalogue Numbers have been given.

POSTER STAMPS - GRAPHIC ARTISTS - THE BEST OF THE REST



Cat. No.	R	Cat. No.	R	Cat. No.	R	Cat. No.	R
AT1.9	30	AT1.10	40	AT1.11	40	AT1.12	40
AT1.13	40	AT1.14	40	AT1.15	40	AT1.16	40
AT1.17	40	AT1.18	40				

Notes :

1. the above can be found on 'cream' and 'white' papers – no separate Catalogue Numbers have been given;
2. the above can be found on different sized papers – no separate Catalogue Numbers have been given.



Cat. No.	R	Cat. No.	R	Cat. No.	R
AT1.19	80	AT1.20	80	AT1.21	80
AT1.22	80	AT1.23	80	AT1.24	80
AT1.25	80	AT1.26	80	AT1.27	80
AT1.28	80				





J AUER

Cat. No.	R	Cat. No.	R	Cat. No.	R
AU1.1	100	AU1.2	100	AU1.3a	50
AU1.4	80	AU1.5	80	AU1.6	80
AU1.7	80	AU1.8	80	AU1.9	80

Note : AU1.3 background = 'a' = pink; 'b' = green; 'c' = deep blue; 'd' = orange.



Max AURICH

Cat. No.	R	Cat. No.	R	Cat. No.	R
AU2.1a	50	AU2.21	30	AU2.31	50
AU2.4	200	AU2.51	300	AU2.61	200
AU2.71	80	AU2.81	300	AU2.91	100

Note : AU2.1 : 'a' = yellow background; 'b' = cream background.



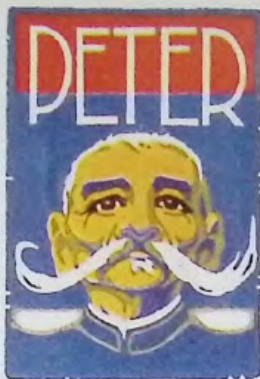
Cat. No.	R	Cat. No.	R	Cat. No.	R
AU2.101	80	AU2.111	300	AU2.12	300
AU2.131	100	AU2.141	300		

Note : AU2.12 - no colour image is available.

The poster stamps detailed below are at the next page :

Ernst Hamlin BAKER one other of his poster stamps is detailed as Cat. No. BA4.1 in the 'ONE, TWO OR THREE DESIGNS ONLY' Catalogue.

Cat. No.	R	Cat. No.	R	Cat. No.	R
BA4.2	40	BA4.3	40	BA4.4	40
BA4.5	40	BA4.6	40	BA4.7	40
BA4.8	40	BA4.9	40	BA4.10	40
BA4.11	40	BA4.12	40	BA4.13	40





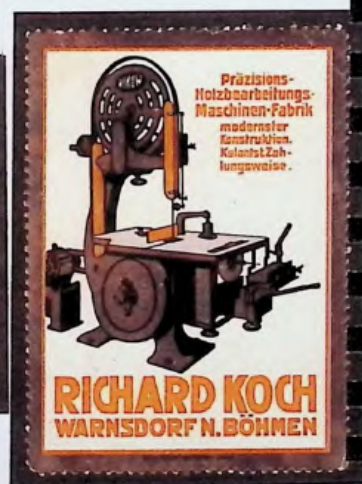
BE3 Carl BERGMÜLLER BI3 = D BIERWIRT

Cat. No.	R	Cat. No.	R	Cat. No.	R
BE3.1	80	BE3.2	80	BE3.3	80
BE3.4	80	BI3.1	80	BI3.2	80
BI3.3	80	BI3.4	80	BI3.5	80



Hans BERNHARDT

Cat. No.	R	Cat. No.	R	Cat. No.	R	Cat. No.	R
BE4.1	80	BE4.2	80			BE4.3	80
BE4.4	80	BE4.5a	50	BE4.6a	50	BE4.7a	50
BE4.7b	40	BE4.5c	50	BE4.6c	50	BE4.7c	50



BI2 = Vespasiano BIGNAMI

BO3 = N BÖHMEN

Cat. No.	R	Cat. No.	R	Cat. No.	R	Cat. No.	R
BI2.1	150	B12.2I	150	BI2.3	150	BI2.4	150
BO3.1	60	BO3.2	60			BO3.3	60
BO3.4	60						



Alfred BÖLD

Cat. No.	R	Cat. No.	R	Cat. No.	R	Cat. No.	R
BO6.1	100	BO6.2	100	BO6.3	100	BO6.4	100
BO6.5	100	BO6.6	100	BO6.7	60	BO6.8	60
BO6.9	60	BO6.10	60	BO6.11	60	BO6.12	60



Cat. No.	R	Cat. No.	R	Cat. No.	R
BO6.13	40	BO6.14	40	BO6.15	40
BO6.16	40	BO6.17	40	BO6.18	40
BO6.19a	100			BO6.19b	100



Cat. No.	R	Cat. No.	R	Cat. No.	R
BO6.20	20	BO6.21	20	BO6.22	20
BO6.23	100	BO6.24	20	BO6.25	20
				BO6.26	20



Umberto BONETTI

Cat. No.	R	Cat. No.	R	Cat. No.	R	Cat. No.	R
BO7.1a	60	BO7.2a	30			BO7.3	60
BO7.4	30	BO7.5	30	BO7.6	30	BO7.7	30
BO7.8	30	BO7.9	30			BO7.10	40

Notes :

1. BO7.1b = blue and cream only;
2. BO7.2 : the coloured papers are as follows : 'a' = pale yellow; 'b' = orange; 'c' = pale grey-blue; 'd' = yellow on yellow paper; 'e' = pink; 'f' = blue - grey.



Cat. No.	R	Cat. No.	R	Cat. No.	R
BO7.11 sheet	80				
BO7.12a	40	BO7.12b	40	BO7.13a	50

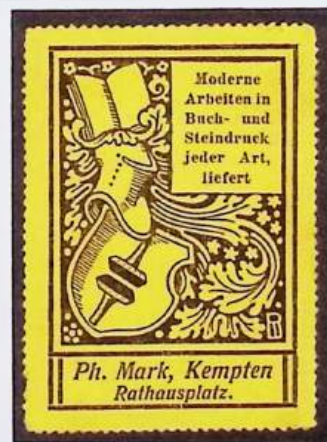
Notes :

1. BO7.11 : the 'Rarity' is 30;
2. BO7.13 : the coloured backgrounds are as follows : 'a' = orange / yellow; 'b' = deep blue; 'c' = grey / blue; 'd' = green; 'e' = pink.



Fritz BUCHHOLZ

Cat. No.	R	Cat. No.	R	Cat. No.	R	Cat. No.	R
BU1.1	40	BU1.2	40	BU1.3	40	BU1.4	40
BU1.5	40	BU1.6	40	BU1.7	40	BU1.8	40



Raymond BUCHS

Cat. No.	R	Cat. No.	R	Cat. No.	R
BU2.1a	60	BU2.2a	60	BU2.3a	60
BU2.4	300	BU2.5	300	BU2.6	300
BU2.7	80	BU2.8	80	BU2.9	40

Notes :

1. BU2.1 and BU2.2 are Olympic Games designs;
2. BU2.1 : Sky 'a' = blue; 'b' = red; 'c' = green; 'd' = black;
3. BU2.2 : Sky 'a' = violet; 'b' = brown; 'c' = green; 'd' = black;
4. BU2.3 : BU1.1 : 'a' = yellow; 'b' = orange; 'c' = blue - for 'c', 'yellow' ranges from pale to deep yellow.

POSTER STAMPS - GRAPHIC ARTISTS - THE BEST OF THE REST

Raymond BUCHS

Below and at the next two pages are details and illustrations of 11 different Raymond BUCHS designs. Each design and each variant is a great rarity. Below is a table indicating which combination of designs, texts and colours have been seen. Overall, it is a very small number. No pair nor multiple has been seen. With one exception (suffix 'f'), the border and parts of the design are in the indicated colour. Again, with this one exception, all have black in the design. 'Seen' = y. The design is indicated vertically and the colour (combination) is indicated horizontally. It is assumed that all colour(s) and text variants (have) exist(ed). One other similar style design is known and this is by the artist Oskar HABERER and the poster stamps are illustrated under that artist.

Catalogue Numbers :

Cat. No.	design
BU2.10	man with flag
BU2.11	lady tennis player
BU2.12	footballer
BU2.13	man bowling
BU2.14	three men on a toboggan
BU2.15	woman on skis
BU2.16	two women playing 'croquet'
BU2.17	man with rifle
BU2.18	fisherman
BU2.19	man & woman skating
BU2.20	man climbing

Design / colour(s)	a	b	c	d	e	f	T1	T2	T3	T4
man with flag	y	y		y	y		d			c
lady tennis player	y		y	y				f	d	
footballer	y		y	y			y			c
man bowling			y	y	y				d	f
three men on a toboggan	y				y					
woman on skis				y						
two women playing 'croquet'					y					
man with rifle	y			y			y			f
fisherman	y			y						
man & woman skating	y	y		y						
man climbing				y	y					

Colour(s) suffixes :

'a' = black on white;

'b' = brown / pink with green design;

'c' = yellow on white (some have no white showing);

'd' = green on white;

'e' = light (or dull) brown mauve on white;

'f' = brown on yellow surfaced paper;

'T1' = with 'Etablissement ' added text;

'T2' = with 'Minna Landgraf ' added text.;

'T3' = "Goldener Adler" added text;

'T4' = 'Rich. Voigt' (? 'Voigt' old German script).

For 'added text', to complete a suffix, add '.T1' etc. to the alpha. suffix code.

Example : BU2.10c.T4

POSTER STAMPS - GRAPHIC ARTISTS - THE BEST OF THE REST



Cat. No.	R	Cat. No.	R	Cat. No.	R
BU2.10a	200	BU2.11c	200	BU2.11f.T2	200
BU2.11d.T3	200	BU2.12c	200	BU2.13e.T4	200
BU2.14e	200	BU2.15d	200	BU2.16e	200



Cat. No.	R	Cat. No.	R	Cat. No.	R
BU2.17d.T1	200	BU2.18a	200	BU2.19b	200
BU2.20d	200	BU2.21	80	BU2.22	60
BU2.25	150	BU2.26	80	BU2.23	60
				BU2.24	60

Note : BU2.22 - .24 – 'Rarity' for a strip of three is 200.



Cat. No.	R	Cat. No.	R	Cat. No.	R	Cat. No.	R
BU2.27	60	BU2.28a	60				
BU2.29b	50	BU2.30a	50	BU31c	50	BU2.32d	50
BU2.30Aa3	100	BU2.30Ab1	80				

Notes :

1. BU2.28 : 'a' = yellow-orange border; 'b' = green border;
2. BU2.30Aa3 = BU2.30 with pictorial margins at both sides : the size of the image is slightly reduced (suffix 'A') - the top of the crown is missing : it is not known if these margins exist for all colours and all designs - if so, add final suffix '3' - see also 'Note 3';
3. it is assumed 'imperf.' must (have) exist(ed) for all colours and designs: it should be noted that here, also, the design is reduced in size and suffix 'A' has been added.

Raymond BUCHS continued :

Below and at the following page is another complex set. There are 16 numbered designs in the set. No imperforate poster stamp has been seen. The set is complex as it has (at least) seven colour combinations. 'Rarity' of each is 60.

Catalogue number	Number in the design
BU2.33	1
BU2.34	2
BU2.35	3
BU2.36	4
BU2.37	5
BU2.38	6
BU2.39	7
BU2.40	8
BU2.41	9
BU2.42	10
BU2.43	11
BU2.44	12
BU2.45	13
BU2.46	14
BU2.47	15
BU2.48	16

suffix	border, etc.	centre of design, etc.
a	pale violet	deep violet
b	yellow	red
c	orange	green
d	pale violet	green
e	grey	red
f	orange	violet
g	green	red



Cat. No.	R	Cat. No.	R	Cat. No.	R	Cat. No.	R
BU2.33a	60	BU2.34b	60	BU2.35a	60	BU2.36a	60

And at the next page :

Cat. No.	R	Cat. No.	R	Cat. No.	R	Cat. No.	R
BU2.37c	60	BU2.38b	60	BU2.39d	60	BU2.40e	60
BU2.41f	60	BU2.42g	60	BU2.43e	60	BU2.44g	60
BU2.45b	60	BU2.46e	60	BU2.47b	60	BU2.48e	60

Raymond BUCHS continued :
See previous page for Catalogue Numbers.





Leopold Moritz Karl CAPELLER (1884-1968)

Cat. No.	R	Cat. No.	R	Cat. No.	R
CA2.1a	200	CA2.2a	200	CA2.3a	200
CA2.4a	200	CA2.5a	200	CA2.6a	300
CA2.7a	300	CA2.8a	200		

Notes :

1. CA2.1 - .8 are from one of the rarest sheets : multiples have not been seen ;
2. just one feature has been chosen to identify the different colours;
3. CA2.1 : 'a' = green (building); 'b' = red; 'c' = yellow;
4. CA2.2 : 'windows' : 'a' = blue; 'b' = violet; 'c' = orange;
5. CA2.3 : face 'a' = cream; 'b' = white; 'c' = lilac;
6. CA2.4 : 3 shields 'a' = brown; 'b' = blue; 'c' = green;
7. CA2.5 : behind 'FK' : 'a' = violet; 'b' = orange (only two have been seen);
8. CA2.6 : aircraft : 'a' = violet; 'b' = blue (only two have been seen);
9. CA2.7 : 'owl' : 'a' = brown; 'b' = blue; 'c' = green;
10. CA2.8 : 'lower panel' : 'a' = red; 'b' = yellow (only 2 have been seen).

POSTER STAMPS - GRAPHIC ARTISTS - THE BEST OF THE REST



Cat. No.	R	Cat. No.	R	Cat. No.	R
CA2.10	100	CA2.11	100	CA2.12	100
CA2.13	50	CA2.14	40	CA2.15a	100

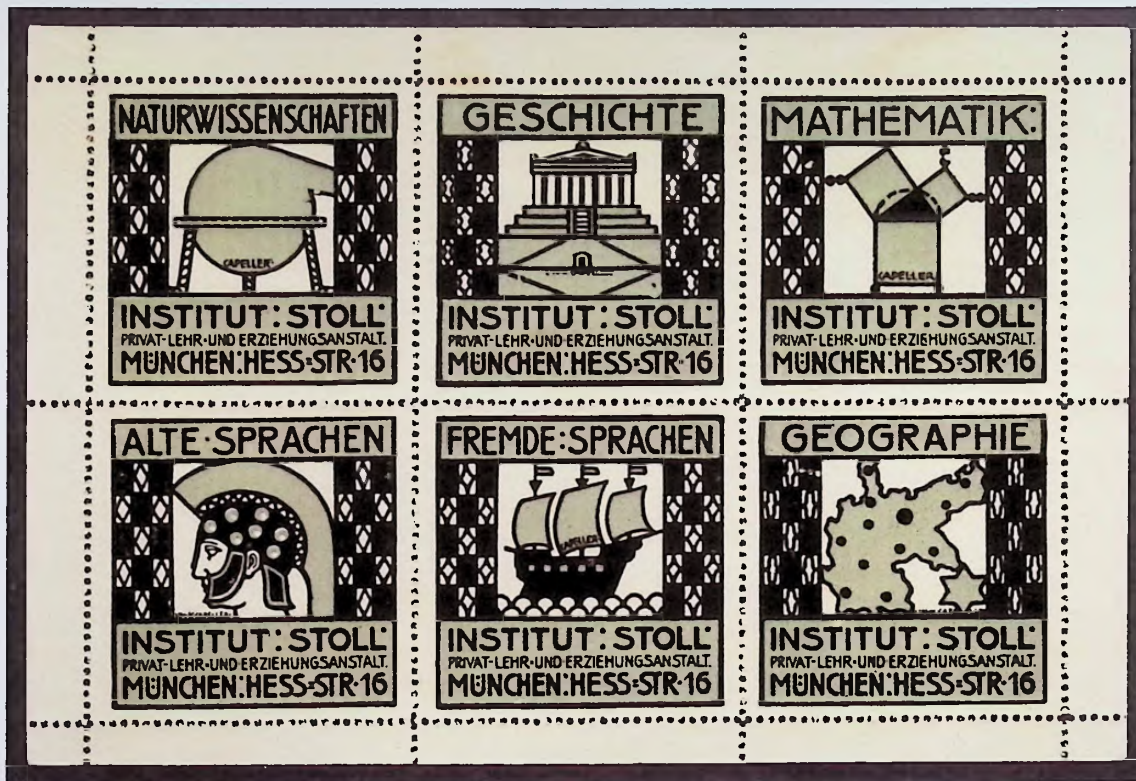
Note : CA2.15 : 'church' 'a' = blue; 'b' = violet – brown (only 2 have been seen).



Cat. No.	R	Cat. No.	R	Cat. No.	R
CA2.16.1	40	CA2.19.1	40	CA2.19.1I	80
CA2.17.1	40	CA2.20.1	40	CA2.20.1I	80
CA2.18.1	40	CA2.21.1	40	CA2.21.1I	80

Notes :

1. these six colours in a block or strip of three are those typically seen;
2. all six colours exist in differing shades – no separate Catalogue Number has been given;
3. all six designs exist imperforate – suffix 'I' (on thicker paper).



Cat. No.	R	Cat. No.	R	Cat. No.	R
CA2.20.2	100	CA2.18.2	100	CA2.21.2	100
CA2.16.2	100	CA2.19.2	100	CA2.17.2	100

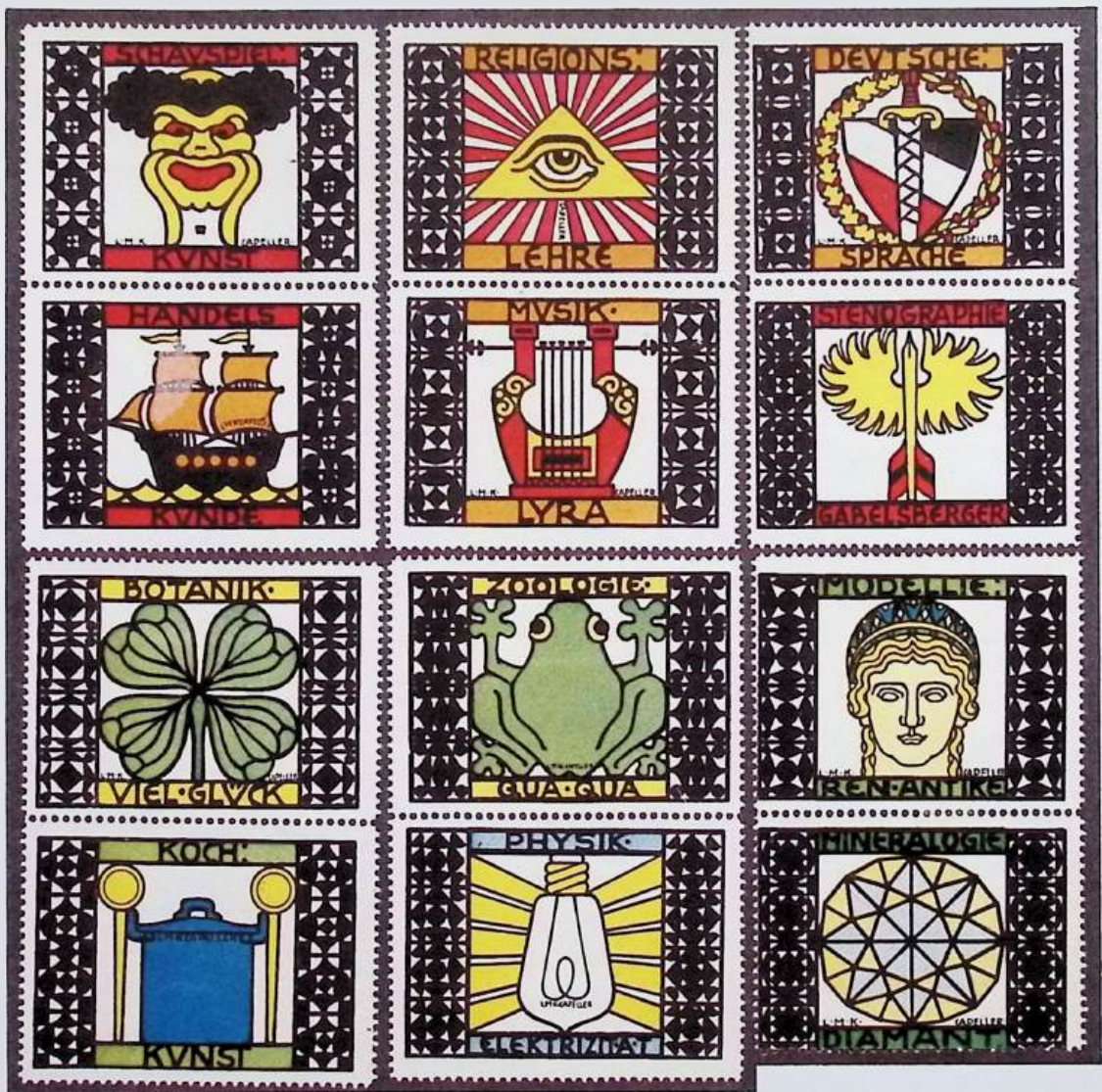
Notes :

- each of these one colour sheets of six are 'rarities' – Catalogue Number 'CA2.16_SHEET' has been used;
- 'Rarity' for any complete sheet of 6 is 800;
- the following suffix numbers apply to complete sheets : add 'SHEET' at the end of any Catalogue Number – see also 'Note 4.' below : the full Catalogue Number of the illustrated sheet is 'CA2.16.2SHEET';
 - .2 = grey green (illustrated);
 - .3 = violet;
 - .4 = deep red;
 - .5 = yellow;
 - .6 = green (not seen);
 - .7 = blue (not seen);
 - .8 = orange (not seen).;
- these colour suffixes (without suffix 'SHEET') could be used if examples are found of single poster stamps i.e. they have come from a 'broken up' one colour sheet of six.



Cat. No.	R	Cat. No.	R	Cat. No.	R
CA2.22	80	CA2.24	80	CA2.26	80
CA2.23	80	CA2.25	80	CA2.27	80
CA2.28	80	CA2.30	80	CA2.32	80
CA2.29	80	CA2.31	80	CA2.33	80

Note : there is no addition to 'Rarity' for vertical pairs.



Cat. No.	R	Cat. No.	R	Cat. No.	R
CA2.34	80	CA2.36	80	CA2.38	80
CA2.35	80	CA2.37	80	CA2.39	80
CA2.40	80	CA2.42	80	CA2.44	80
CA2.41	80	CA2.43	80	CA2.45	80

Note : there is no addition to 'Rarity' for vertical pairs.

Four booklets – see following pages for the poster stamps enclosed in each booklet.

Anton Meindls Schulmarken
Heft Nr. 1 10 Pfennig
Entworfen und herausgegeben von L. M. K. CAPPELLER, Kunstgewerbler u. Zeichenlehrer an der K. Lehrerbildungsanstalt Leutlingen a.D.



Geschmackvolle, praktische Verwendung der Schulmarken zur Ausstattung eines Heft- oder Buchumschlages

Verlag:
Anton Meindl, Pasing bei München

Anton Meindls Schulmarken
Heft Nr. 2 10 Pfennig
Entworfen und herausgegeben von L. M. K. CAPPELLER, Kunstgewerbler u. Zeichenlehrer an der K. Lehrerbildungsanstalt Leutlingen a.D.



Geschmackvolle, praktische Verwendung der Schulmarken zur Ausstattung eines Heft- oder Buchumschlages

Verlag:
Anton Meindl, Pasing bei München

Anton Meindls Schulmarken
Heft Nr. 3 10 Pfennig
Entworfen und herausgegeben von L. M. K. CAPPELLER, Kunstgewerbler u. Zeichenlehrer an der K. Lehrerbildungsanstalt Leutlingen a.D.



Geschmackvolle, praktische Verwendung der Schulmarken zur Ausstattung eines Heft- oder Buchumschlages

Verlag:
Anton Meindl, Pasing bei München

Anton Meindls Schulmarken
Heft Nr. 4 10 Pfennig
Entworfen und herausgegeben von L. M. K. CAPPELLER, Kunstgewerbler u. Zeichenlehrer an der K. Lehrerbildungsanstalt Leutlingen a.D.



Geschmackvolle, praktische Verwendung der Schulmarken zur Ausstattung eines Heft- oder Buchumschlages

Verlag:
Anton Meindl, Pasing bei München

Opposite is an illustration of the back of each of the four booklets.

The Catalogue Number of each complete booklet is as follows :

Cat. No.	R
CA2.booklet 1	600
CA2.booklet 2	600
CA2.booklet 3	600
CA2.booklet 4	600

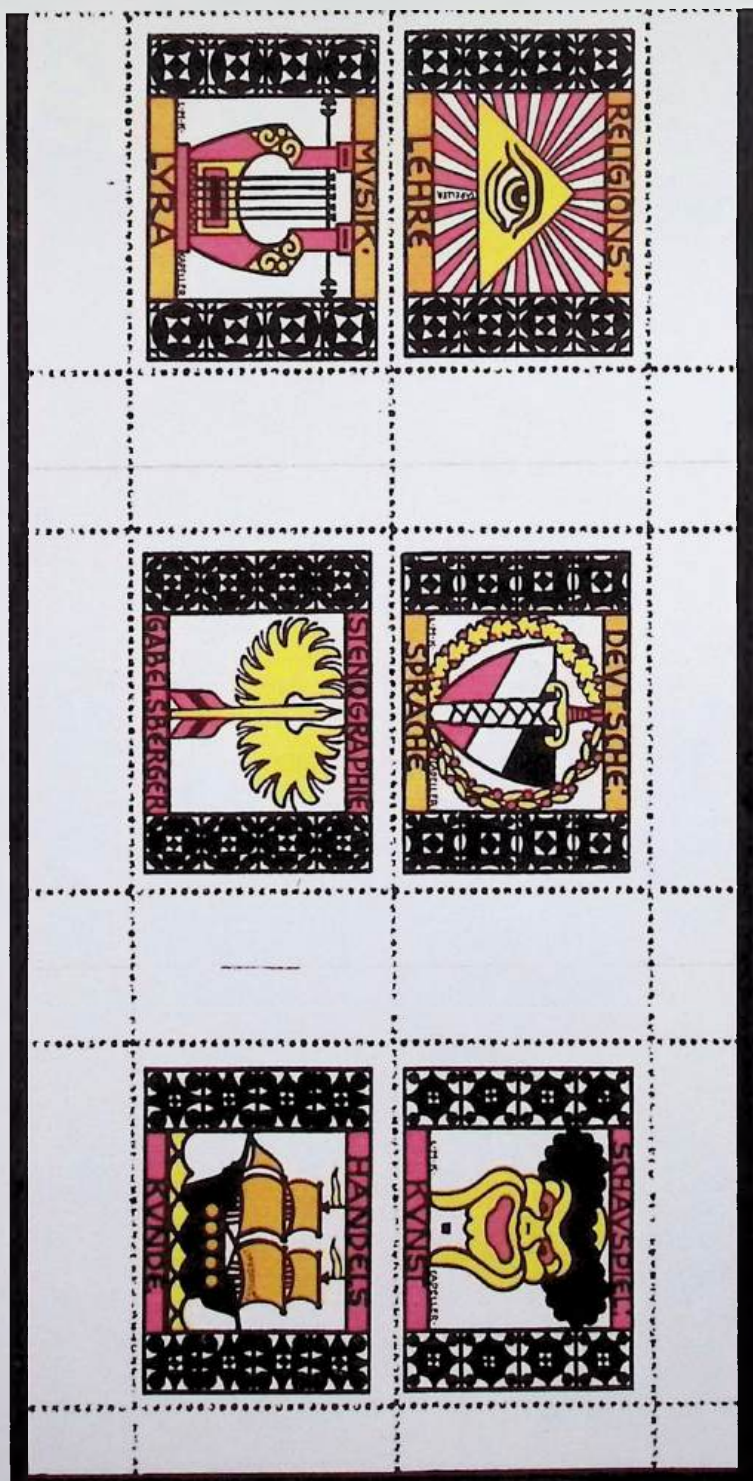
The Catalogue Number of each booklet pane is as follows :

Cat. No.	R
CA2.pane 1	600
CA2.pane 2	600
CA2.pane 3	600
CA2.pane 4	600

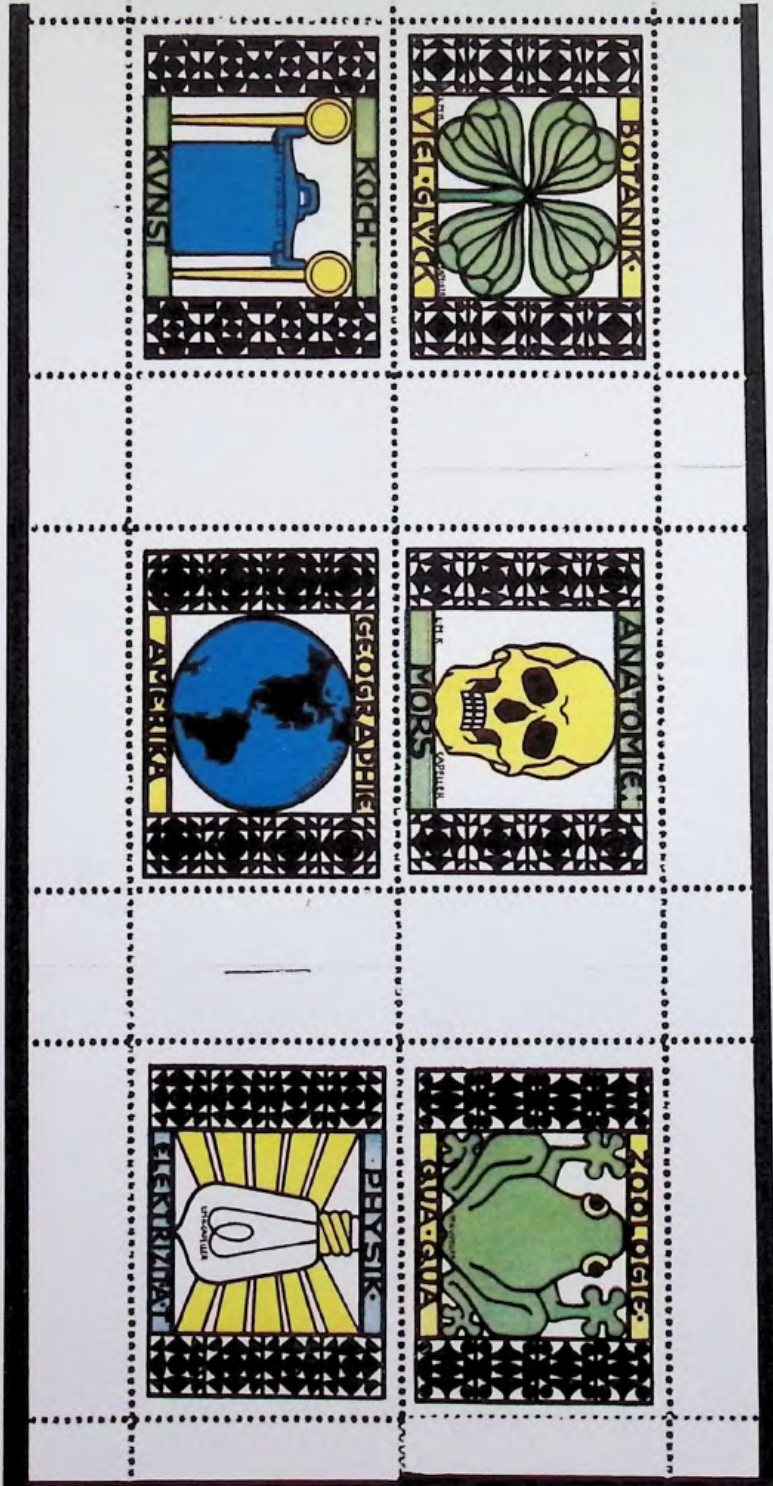
Note :
Although each of the poster stamps in each pane / booklet has wide margins, a separate Catalogue Number has not been allocated for each poster stamp in a pane. Catalogue Numbers (and 'Rarity') CA2.22 – CA2.45 can be used.



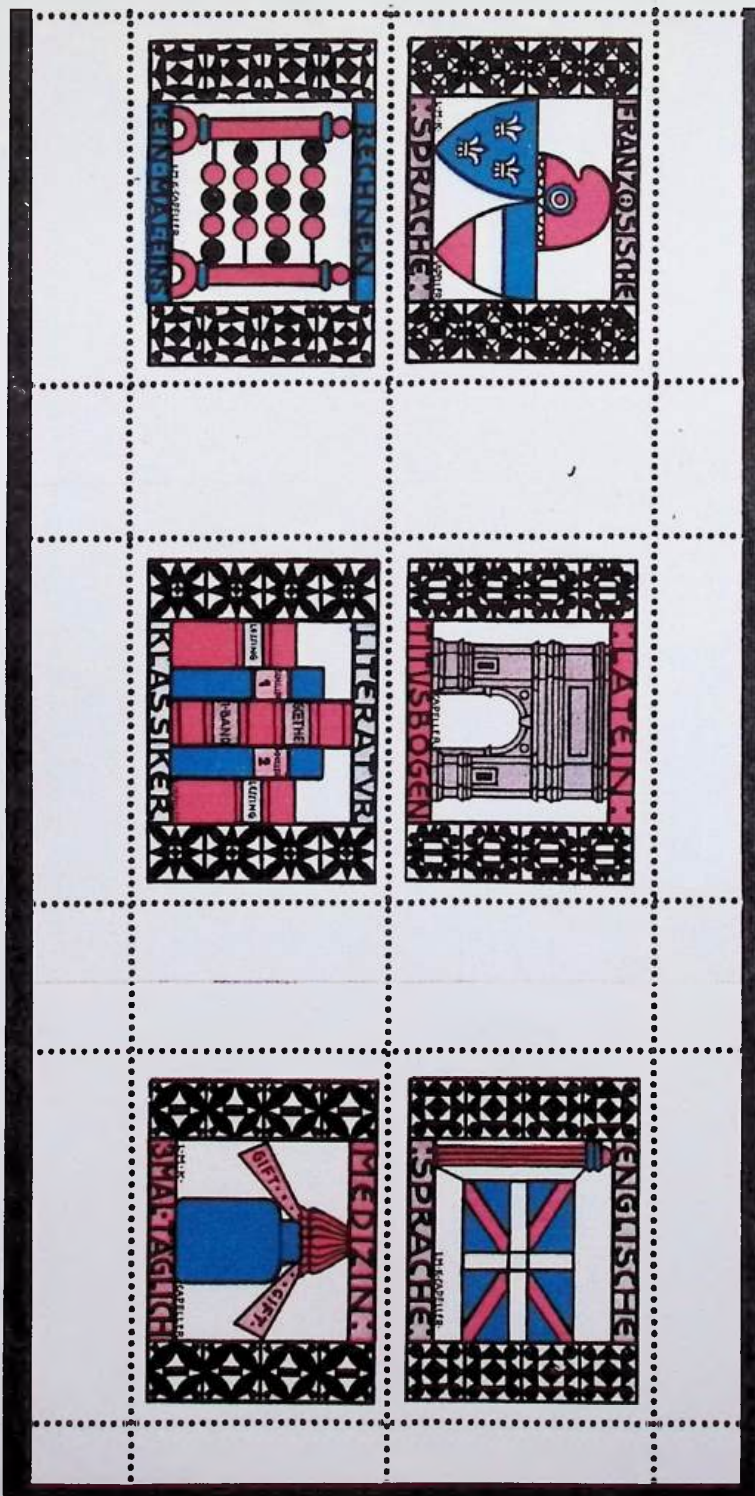
BOOKLET (PANE) 1



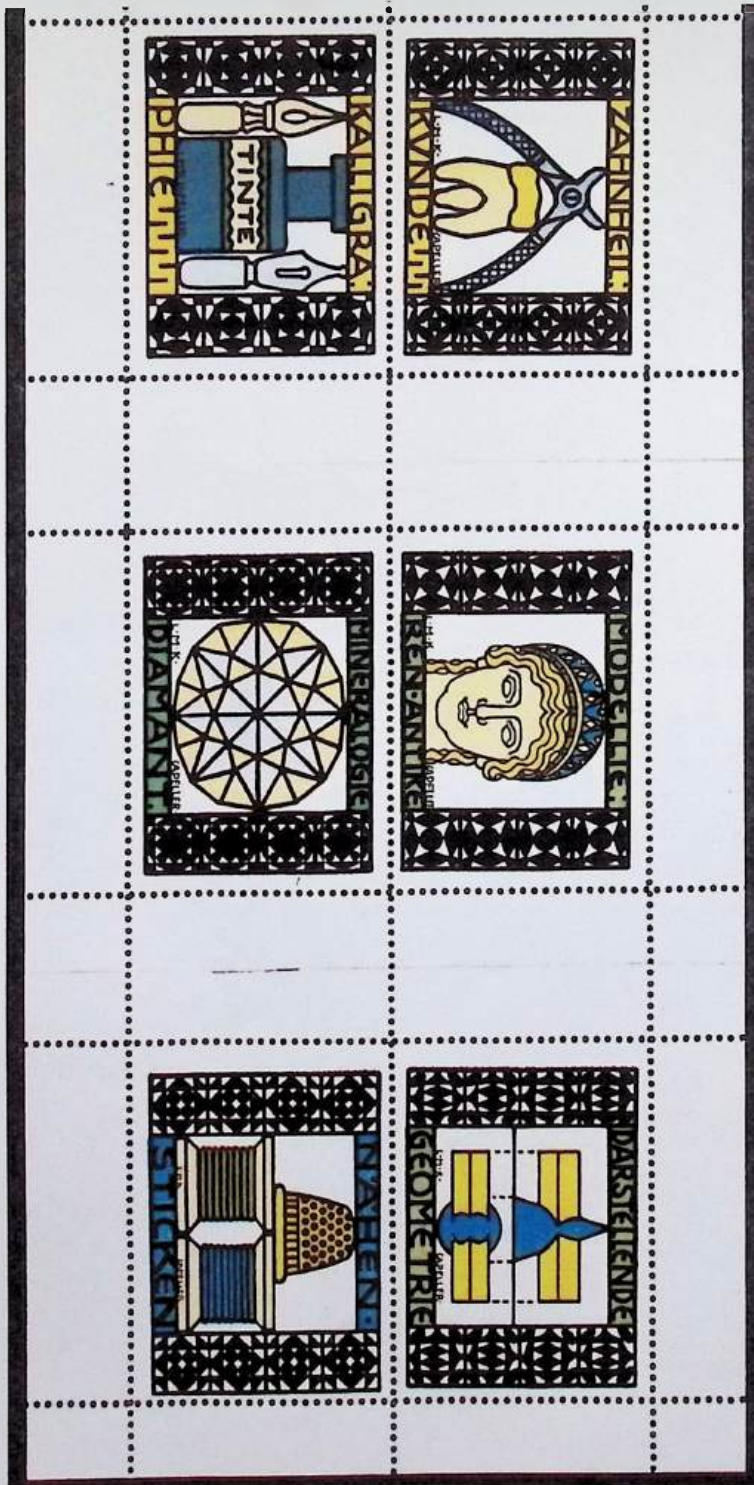
BOOKLET (PANE) 2



BOOKLET (PANE) 3



BOOKLET (PANE) 4





Cat. No.	R	Cat. No.	R
CA2.46	20	CA2.47	20
CA2.48	20	CA2.49	20
CA2.50	20	CA2.51	20

Note : the 'Rarity' of the block of six is 150.

POSTER STAMPS - GRAPHIC ARTISTS - THE BEST OF THE REST

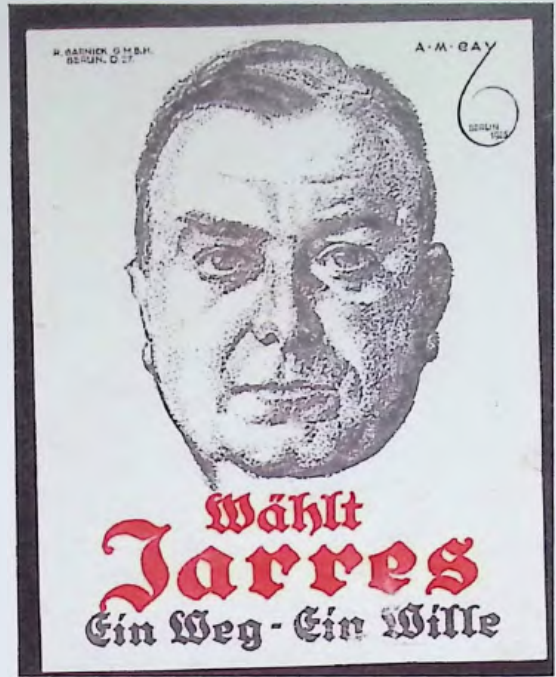


A M CASSANDRE

Cat. No.	R	Cat. No.	R	Cat. No.	R	Cat. No.	R
CA3.1	200	CA3.2al	40	CA3.2bl	40	CA3.3	40
CA3.4a	60	CA3.4b	60			CA3.4c	60
CA3.5al	300	CA3.5a	300	CA3.5b	300	CA3.5c	300
						CA3.6l	100

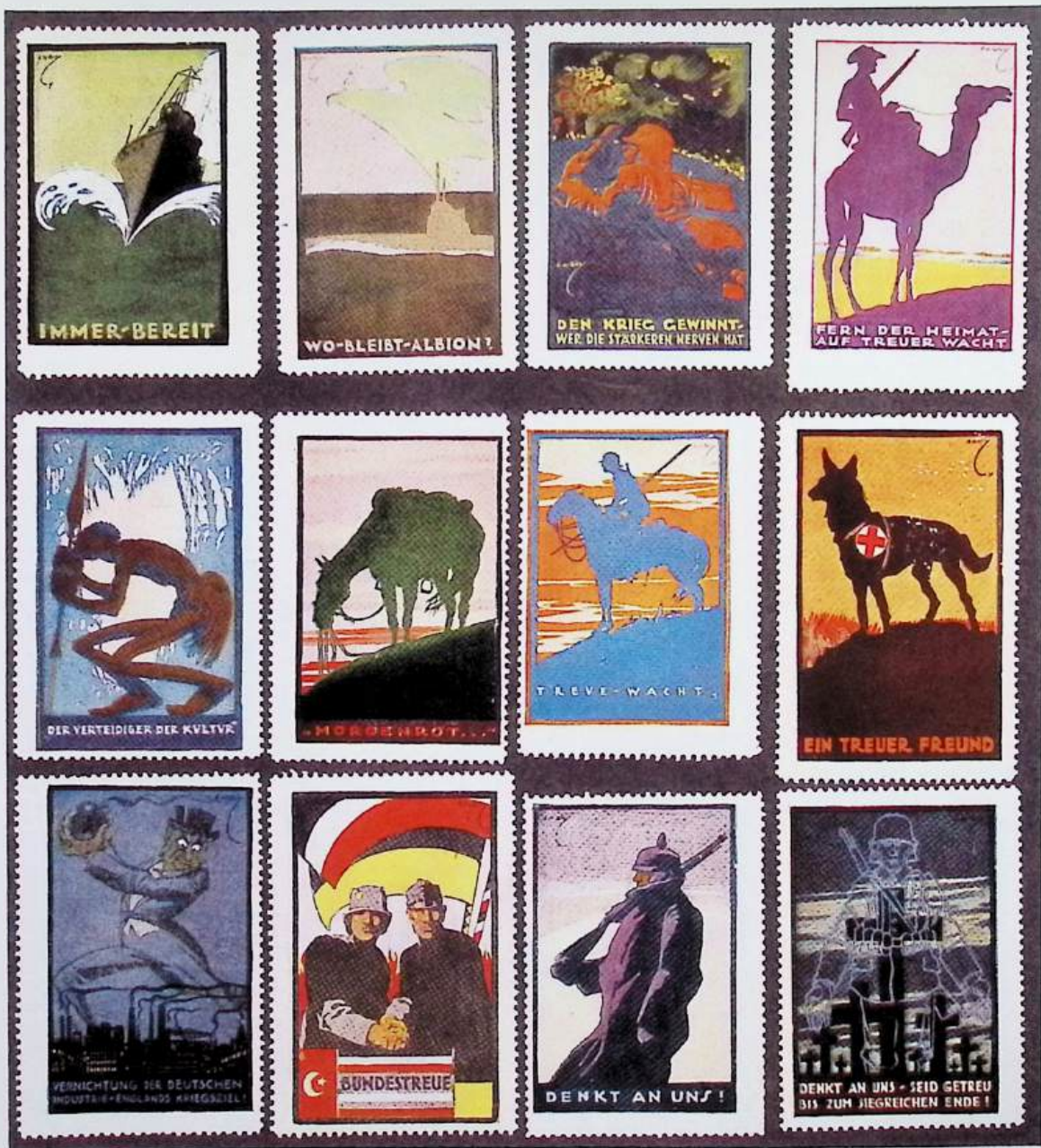
Notes :

1. CA3.2 : this iconic poster stamp (design) used to be a rarity but many are now offered on the Internet;
2. CA3.3 is after 1939 (1957) but it is another iconic Cassandre design;
3. CA3.4, .5 and CA3.6 are other iconic designs;
4. CA3.5 : it is certain there are other variants but these have not been seen.



A M CAY

Cat. No.	R	Cat. No.	R
CA4.1I	200	CA4.2I	200
CA4.3I	200	CA4.4I	200
CA4.5I	200		



Cat. No.	R	Cat. No.	R	Cat. No.	R	Cat. No.	R
CA4.6	40	CA4.7	60	CA4.8	40	CA4.9	40
CA4.10	40	CA4.11	40	CA4.12	40	CA4.13	60
CA4.14	40	CA4.15	40	CA4.16	40	CA4.17	40

Notes :

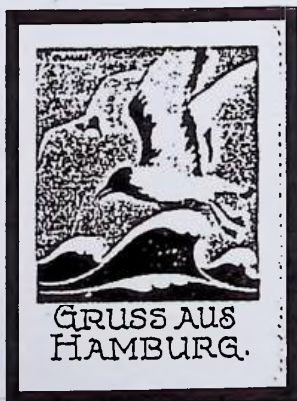
1. all 36 designs exist imperforate – add suffix 'I' : 'Rarity' of each is 80;
2. six other similar designs in this series are by Stephen KROTOWSKI.



Cat. No.	R	Cat. No.	R	Cat. No.	R	Cat. No.	R
CA4.18	60	CA4.19	40	CA4.20	40	CA4.21	40
CA4.22	40	CA4.23	40	CA4.24	60	CA4.25	40
CA4.26	60	CA4.27	80	CA4.28	40	CA4.29	40



Cat. No.	R	Cat. No.	R	Cat. No.	R	Cat. No.	R
CA4.30	40	CA4.31	40	CA4.32	40	CA4.33	40
CA4.34	40	CA4.35	40	CA4.36	60	CA4.37	40
CA4.38	40	CA4.39	40	CA4.40	40	CA4.41	40



Berthold CLAUSS

Cat. No.	R	Cat. No.	R	Cat. No.	R
CL1.1	300	CL1.2	300	CL1.3	300
CL1.4	300	CL1.5	300	CL1.6	300
CL1.7	300				

Note : as an indication of rarity, only a poor quality photocopy of CL1.7 is available.

POSTER STAMPS - GRAPHIC ARTISTS - THE BEST OF THE REST



(P) LINDO

P M CODOGNATO 1878-1940

Cat. No.	R	Cat. No.	R	Cat. No.	R	Cat. No.	R
CO3.1	40	CO3.2	40	CO3.3I	150	CO3.4	40
CO3.5	80	CO3.6	20	CO3.7	150	CO3.8	40
						CO3.9	150

Note : CO3.1 exists imperforate – add suffix 'I' – 'Rarity' 60.



Cat. No.	R	Cat. No.	R	Cat. No.	R	Cat. No.	R
CO3.10Aa1	40	CO3.10B1	60	CO3.11a	40	CO3.12a	40
CO3.131	150	CO3.14a	100	CO3.15	80	CO3.16	100

Notes :

1. CO3.10A : very thin transparent paper : 'a' green; 'b' = brown; 'c' = blue : imprint begins 'STAB..';
2. CO3.10B : imprint begins 'OFFICINE ...' : only blue has been seen;
3. CO3.11 : 'a' = red; 'b' = blue;
4. CO3.12a = blue; 'b' = black - brown;
5. CO3.14 : 'a' = blue; 'b' = brown;
6. CO3.16 - this is a colour photocopy and the size is likely to be too big.



Cat. No.	R	Cat. No.	R	Cat. No.	R	Cat. No.	R
CO3.17a	40	CO3.18l	60			CO3.19a	30
CO3.20	100	CO3.21	150	CO3.22	20	CO3.22err	60

Notes :

1. CO3.17 : 'a' = red; 'b' = blue;
2. CO3.19 : 'a' = English text; 'b' = German text; 'c' = French text; 'd' = Italian text.



Theodor DAHLE

Cat. No.	R	Cat. No.	R	Cat. No.	R
DA2.1	80	DA2.2	80	DA2.3	80
DA2.4	80	DA2.5	80	DA2.6	80
DA2.7	80	DA2.8	80	DA2.9	80
DA2.10	80	DA2.11	80	DA2.12	80



John DAPE

Cat. No.	R	Cat. No.	R	Cat. No.	R
DA3.1	100	DA3.2	100	DA3.3	100
DA3.4	100	DA3.5	100	DA3.8I	150
DA3.6	100	DA3.7	100	DA3.9I	150
				DA3.10I	150

Notes :

1. DA3.1 - .7 all exist imperforate - 'Rarity' of each is 150;
2. DA3.8 - .10 have not been seen perforated.



Pieter DAS

Cat. No.	R	Cat. No.	R	Cat. No.	R
DA4.1	200	DA4.2	200	DA4.3i	200
DA4.4i	200	DA4.5i	200	DA4.6a	20
DA4.6b	20	DA4.6c	20	DA4.6d	20

Note : it is only DA4.1 - .5 which are graphically strong and rare but the other poster stamps form part of the artist's body of work;



Cat. No.	R	Cat. No.	R	Cat. No.	R	Cat. No.	R	Cat. No.	R
DA4.7	30	DA4.8	30	DA4.9	30	DA4.10	30	DA4.11	30
DA4.12	30	DA4.13	30	DA4.14	30	DA4.15	30	DA4.16	30
DA4.17	30	DA4.18	30	DA4.19	30	DA4.20	30	DA4.21	30
								DA4.7err	30

Notes :

1. DA4.20 : as can be seen, the base of the poster stamp has a very odd 'double perfs' variant : no additional suffix has been given;
2. more typical 'double perfs' exist for many from this series of 30 : if found, add 'err' to the Catalogue Number : DA4.7err is illustrated.



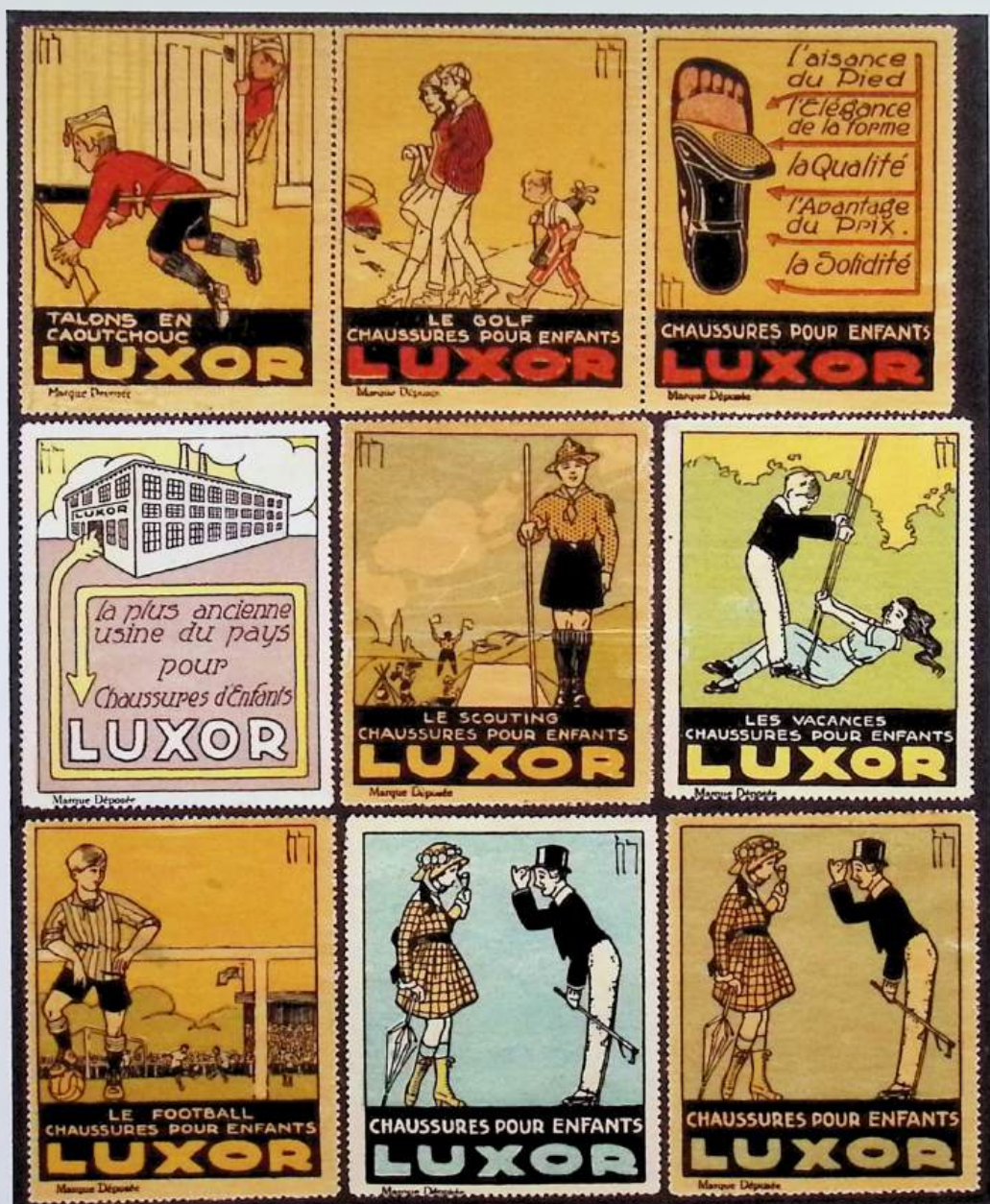
Cat. No.	R	Cat. No.	R	Cat. No.	R	Cat. No.	R	Cat. No.	R
DA4.22	30	DA4.23	30	DA4.24	30	DA4.25	30	DA4.26	30
DA4.27	30	DA4.28	30	DA4.29	30	DA4.30	30	DA4.31	30
DA4.32	40	DA4.33	40	DA4.34	40	DA4.35	50	DA4.36	50

Francis B DELAMARE (Belgium)

The poster stamps of Francis DELAMARE are rare, graphically strong and complex.

There are two series. First, the original designs and, second, much later reworked designs. Illustrated are 25 of the former and 10 of the latter. No one knows if 25 and, especially, 10 are all that exist(ed). Unless the same design(s) were included in the sheet(s), 25 and 10 are not sheet formats. Of course, there may well have been different printings in which not all designs were printed on each occasion. In respect of the original series, there are at least four variants, which are detailed below in the table. These are the variants which have been seen – indicated by 'y'. In respect of the reworked poster stamps, as an indication of rarity, only one is not a (often, poor quality) colour photocopy. These 're-worked' designs have separate Catalogue Numbers, without reference to the earlier Catalogue Numbers.

Cat. No.	Glossy surface - suffix 'a'	Glossy surface, dull yellow – suffix 'b'	Glossy surface, bright colours – suffix 'c'	Matt surface, very white borders – suffix 'd'	Glossy surface, very white borders – suffix 'e'
DE9.1	y	y		y	
DE9.2	y	y		y	
DE9.3	y	y			
DE9.4		y		y	
DE9.5	y				y
DE9.6		y	y		y
DE9.7		y	y		
DE9.8		y	y		
DE9.9	y		y		
DE9.10		y	y	y	
DE9.11		y	y		
DE9.12				y	y
DE9.13			y		
DE9.14			y		y
DE9.15			y		
DE9.16			y		
DE9.17			y		
DE9.18	y		y		
DE9.19			y		
DE9.20			y		
DE9.21	y		y		
DE9.22			y		
DE9.23			y		
DE9.24			y		
DE9.25			y		



Francis B DELAMARE

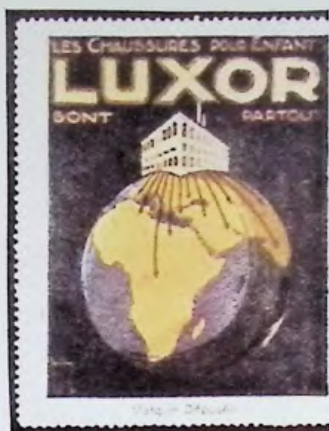
Cat. No.	R	Cat. No.	R	Cat. No.	R
DE9.1b	100	DE9.2b	100	DE9.3b	100
DE9.4b	100	DE9.5a	100	DE9.6c	100
DE9.7b	100	DE9.8c	100	DE9.8b	100



Cat. No.	R	Cat. No.	R	Cat. No.	R
DE9.9a	100	DE9.10c	100	DE9.11c	100
DE9.12e	100	DE9.13c	100	DE9.14c	100
DE9.15c	100	DE9.16c	100	DE9.17c	100



Cat. No.	R	Cat. No.	R	Cat. No.	R
DE9.18c	100	DE9.19c	100	DE9.20c	100
DE9.21c	100	DE9.22c	100	DE9.23c	100
DE9.24c	100	DE9.25c	100	DE9.26	100



Cat. No.	R	Cat. No.	R	Cat. No.	R
DE9.27	100	DE9.28	100	DE9.29	100
DE9.30	100	DE9.31	100	DE9.32	100
DE9.33	100	DE9.34	100	DE9.35	100



Franz Karl DELAVILLA (see Note 2.)

Cat. No.	R	Cat. No.	R	Cat. No.	R	Cat. No.	R
DE8.1	60	DE8.2	60	DE8.3	60		
DE8.4	60	DE8.5	60	DE8.6	60		
DE8.7	60	DE8.8	60	DE8.9	60	DE8.10	60

Notes :

1. DELAVILLA was a Wiener Werkstätte artist;
2. reference has been seen attributing these designs to Josef von DIVEKY, another Wiener Werkstätte artist – this is thought unlikely : 9 of DIVEKY poster stamp designs are illustrated later in this Catalogue;
3. in the sheet, DE8.7 is next to DE8.3 and DE8.9 is next to DE8.6.



Franz Karl DELAVILLA continued

Cat. No.	R	Cat. No.	R	Cat. No.	R
DE8.11	40	DE8.11P	150	DE8.12	20

DICIOLO

Cat. No.	R	Cat. No.	R	Cat. No.	R
DI2.1a	150	DI2.2	200	DI2.3	20
DI2.4	30	DI2.5I	40		

Notes :

1. DI2.1 : 'a' = black, 'b' = black on blue; 'c' = black on deep red; 'd' = black on yellow;
2. DI2.4 : suffix 'I' = Imperforate – can be seen with very large margins.



Hans DIETRICH

Cat. No.	R	Cat. No.	R	Cat. No.	R
DI3.1	100	DI3.2	100	DI3.3	40
DI3.4	20	DI3.5	20	DI3.6	20
		DI3.7	40	DI3.8	80



Alex Walter DIGGELMANN 1902-1987

Cat. No.	R	Cat. No.	R	Cat. No.	R	Cat. No.	R
DI4.1	100	DI4.2	40	DI4.3I	30		
				DI4.4I	80		
DI4.5I	40	DI4.6I	60	DI4.7I	60	DI4.8I	80



Josef von DIVEKY

Cat. No.	R	Cat. No.	R	Cat. No.	R	Cat. No.	R
DI5.1	40	DI5.2	40	DI5.3	40		
DI5.4	40	DI5.5	40	DI5.1	40		
DI5.2	40	DI5.3	40	DI5.4	40	DI5.6	80

Note : 'Rarity' for the block of 9 is 400.



Rudolf DIX

Cat. No.	R	Cat. No.	R	Cat. No.	R	Cat. No.	R
DI6.1	40	DI6.2	40	DI6.3	40	DI6.4	40
DI6.5	40	DI6.6	40	DI6.7	40	DI6.8	40

Note : all exist imperforate – suffix 'I' : 'Rarity' of each is 60.



Cat. No.	R	Cat. No.	R	Cat. No.	R
DI6.9a	40	DI6.10a	40	DI6.11a	40
DI6.12a	40	DI6.13a	40	DI6.14a	40
				DI6.15a1	80

Notes :

1. DI.9 to .14 : 'a' = blue; 'b' = green; 'c' = brown;
2. DI6.15 : exists imperf. as illustrated and perf (DI6.15_);
3. DI6.15 : perf. and imperf :

suffix	colour	suffix	colour
a	green background, deep brown	d	pale brown background, deep brown
b	grey background, deep brown	e	deep brown background, pale brown
c	grey background, pale brown		



Marcello Mailand J DUDOVITCH

Cat. No.	R	Cat. No.	R	Cat. No.	R	Cat. No.	R
DU1.1a	80	DU1.2	100	DU1.3	100	DU1.4	20
DU1.5	30	DU1.6a	60	DU1.7	80	DU1.8	100

Notes :

1. DU1.1 : 'a' = grey-green background; 'b' = deep grey-green, 'c' = bright pale green; 'd' = orange (shades);
2. DU1.6 : 'a' = brown (shades); 'b' = violet (shades).



Cat. No.	R	Cat. No.	R	Cat. No.	R	Cat. No.	R
n/a	-	n/a	-	n/a	-	n/a	-
DU1.9Aa	80	n/a	-	DU1.9BI	100	n/a	-
DU1.9Cc	100	DU1.10	30	DU1.11	40		

Notes :

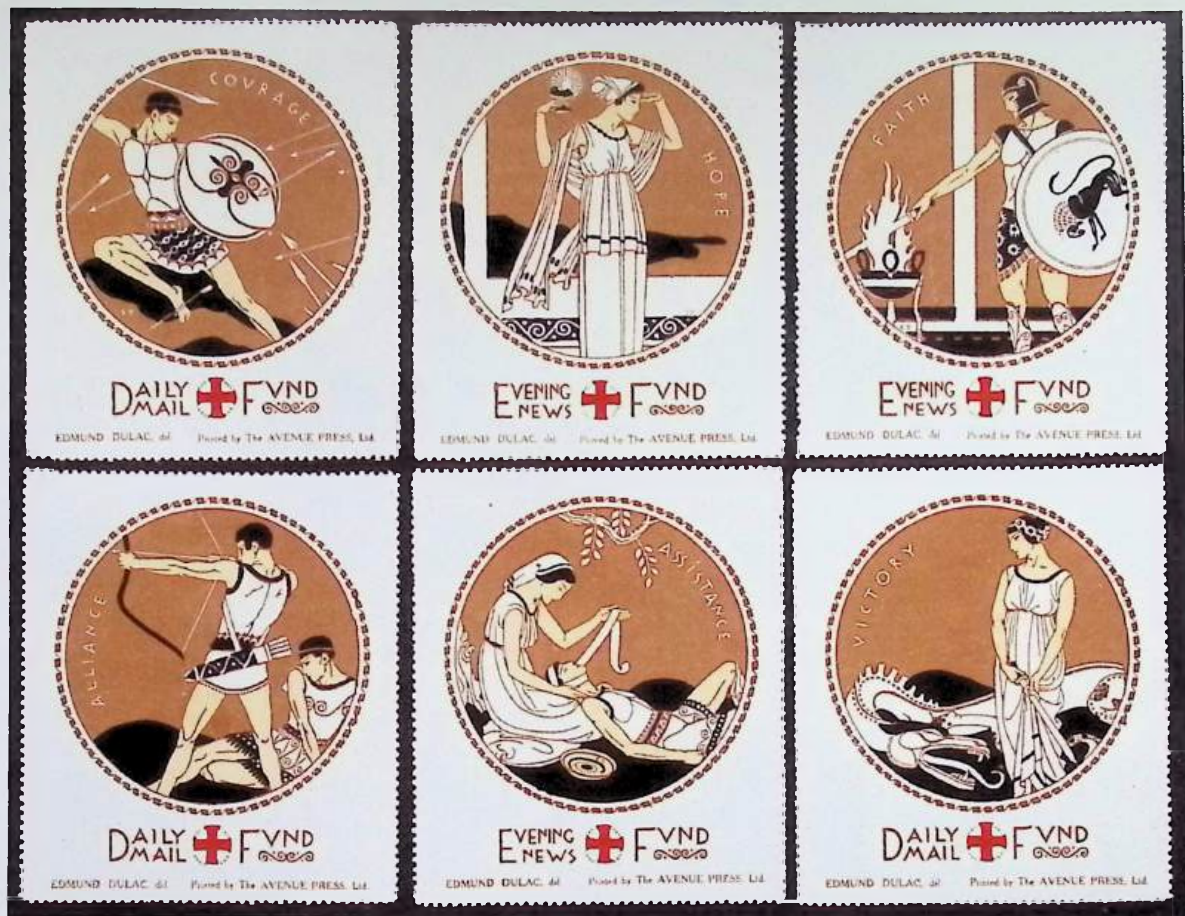
1. DU1.9A and DU1.9BI : the 'Rarity' is for the block of four;
2. DU1.9A : the colours are : 'a' = green; 'b' = violet; 'c' = red;
3. DU1.9BI : shades of brown exist;
4. both DU1.9A and 'B' exist as part of a set of 4 different blocks of 4;
5. DU1.9C : 'A' is on glossy paper : 'C' is on 'matt' paper : DU1.9C, although on matt paper, may have come from a DU1.9 block : suffix 'c' has been allocated as green and violet may (have) exist(ed).



Cat. No.	R	Cat. No.	R	Cat. No.	R	Cat. No.	R
DU1.12l	30	DU1.13l	30			DU1.12tbl	100
DU1.12	40	DU1.14al	60	DU1.15a	40	DU1.16a	40

Notes :

1. DU1.12 and .13 : different shades of brown exist;
2. DU1.12tbl = tete-beche pair;
3. DU1.14_l : 'a' = red; 'b' = black; 'c' = purple; 'd' = blue;
4. DU1.16 : 'a' = blue; 'b' = brown?(shades); 'c' = violet.



Edmund DULAC

Cat. No.	R	Cat. No.	R	Cat. No.	R
DU2.1	30	DU2.2	30	DU2.3	30
DU2.4	30	DU2.5	30	DU2.6	30
DU2.7	60				

: SOOLBAD HOTEL PFISTERWALD :
BEI SULZ a. NECKAR
Luftkurort im württembergischen Schwarzwald
 ——— 443 m ü. M. ———
 Telephon Nr. 54, Amt Soolbad Sulz



Jacob DURST

Cat. No.	R	Cat. No.	R	Cat. No.	R
n/a	-	n/a	-	DU3.3	150
DU3.1	150	DU3.2	150	DU3.4	150
				DU3.5	150

Note : the 'Rarity' for the sheet is 500.



Rudolf DÜRRWANG

Cat. No.	R	Cat. No.	R	Cat. No.	R
DU4.1	80	DU4.2	80	DU4.3	80
DU4.4	80	DU4.5	80	DU4.6	30
DU4.7	30	DU4.8	30		



Cat. No.	R	Cat. No.	R	Cat. No.	R
DU4.9	30	DU4.10	30	DU4.11	80
DU4.12	150	DU4.13	20	DU4.14	20
DU4.15	150	DU4.16	150	DU4.17	150



Cat. No.	R	Cat. No.	R	Cat. No.	R
DU4.18	40	DU4.19	50	DU4.20a	50
DU4.21	50	DU4.22	50	DU4.18errl	100
DU4.18al	100	DU4.18bl	100		

Notes :

1. each of the different languages have been given a different Cat. No. rather than alpha. suffixes;
2. DU4.18__ : error 'EX' and below it 'EX' rather than 'ES' – suffix 'err';
3. DU18al : 'a' thin lettering, no '.' After 'SCHWEIZ'; 'b' = thick lettering : both have the central gold design omitted : these two poster stamps should have suffix 'err' added (before the final 'l') but this would result in an unwieldy Catalogue Number;
4. DU4.20 : 'a' = orange; 'b' = yellow (the text is difficult to see).



Charles DUTT

Cat. No.	R	Cat. No.	R	Cat. No.	R
DU5.1	200	DU5.2	200	DU5.3	200
DU5.4	200	DU5.5	200	DU5.6	200



DWU

Cat. No.	R	Cat. No.	R	Cat. No.	R
DW1.1	40	DW1.2	40	DW1.3	100
DW1.4I	40	DW1.5	100	DW1.6	150
DW1.7I	30	DW1.8	100	DW1.9I	200

Note : the DW1 poster stamps were created by Dieter Walcher Ulm in Ulm. This was a creative studio (atelier). The actual artists are not known but this is not untypical e.g. 'U.Levi' and 'RKS' – 'Reklamemarken Stuttgart'. Most of the DWU poster stamps are rarities.



Cat. No.	R	Cat. No.	R	Cat. No.	R
DW1.10	200	DW1.11	150	DW1.12	150
DW1.13a	150	DW1.13aERR	200		
DW1.14	150	DW1.15	200	DW1.16a	150

Notes :

1. DW13 : 'a' = red stripes; 'b' = green stripes;
2. DW13aERR : as can be seen, the red is grossly misplaced;
3. DW1.16 : 'a' = brown border; 'b' = green border.



Cat. No.	R	Cat. No.	R	Cat. No.	R	Cat. No.	R
DW1.17	40	DW1.18	100	DW1.19	100		
DW1.20	150	DW1.21a	80	DW1.22	100	DW1.23	100
DW1.24a	100	DW1.25	100				

Notes :

1. DW1.21 : 'a' = red sky; 'b' = blue; 'c' = yellow;
2. DW1.23 : other colours may (have) exist(ed) – see DW1.24 for the same trader;
3. DW1.24 : 'a' green hat, etc. ; 'b' = red hat, etc.



Rudolf EBERLE

Cat. No.	R	Cat. No.	R	Cat. No.	R
EB1.1aA	80	EB1.2aA	80	EB1.3	30
EB1.1bA	80	EB1.2aA	80	EB1.1cB	100
				EB1.2cB	100

Notes :

1. EB1.1a_SHEET : the 'Rarity' is 200;
2. it is likely to be the case that all the variants were printed in pairs;
3. 'a' = black-brown; 'b' = deep red-brown; 'c' = chocolate-brown;
4. 'B' = with added event details.



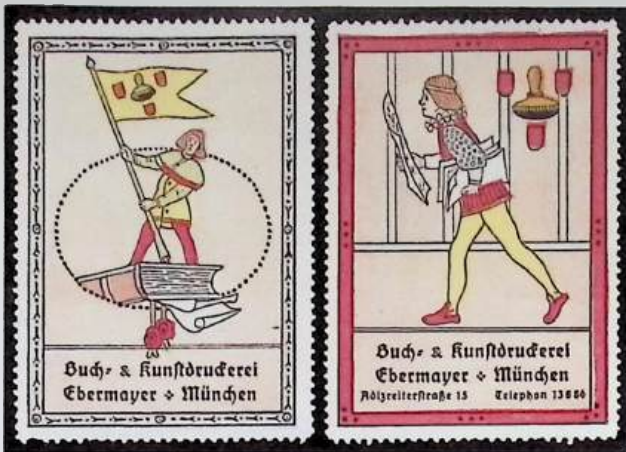
R EBERMAYER

Cat. No.	R	Cat. No.	R	Cat. No.	R
EB2.1	60	EB2.2	60	EB2.3	60
		EB2.4a	80	EB2.5a	80

Notes :

1. all these and the following EBERMAYER designs have a 'multitude' of colour variants;
2. the following are the colour variants for EB2.4 and .5 :

EB2.4 colours			EB2.5 colours			
suffix	border lines	centre	paper	suffix	border lines	
a	violet	blue	white	a	green	black
b	violet	green and brown (boar)	"	b	orange	pink
c	green	orange	"	c	orange	black
d	blue	pink	"	d	red-orange	black
e	violet	yellow	"	e	yellow	black
f	violet	green	"	f	violet	black
g	blue	orange	"			



Cat. No.	R	Cat. No.	R	Cat. No.	R
EB2.6a	60	EB2.7a	60	EB2.8a	60
EB2.9a	60				

Notes :

1. EB2.6, .7, .8 and .9 are likely to have the same colour variants : where a colour / paper colour variant is not indicated it is likely these exist(ed);
2. the following are the colour variants for EB2.6, .7, .8 and .9 : some of the colour combinations are complex and just two aspects of the variants are indicated :

suffix	paper surface	background behind text	.6	.7	.8	.9
a	white	creamy-pink	y	y	y	y
b	very deep red	brown	y	y	y	y
c	orange-red	orange-red	y	y	y	y
d	orange	orange	y	y	y	y
e	dull yellow	yellow-brown	y	y	y	y
f	green	green	y	y	y	y
g	yellow	yellow		y		



Cat. No.	R	Cat. No.	R	Cat. No.	R	Cat. No.	R
EB2.10a	60	EB2.11a	60	EB2.11d	60	EB2.12g	60
EB2.13a	60	EB3.14a	60				

EB2.10

EB2.11

EB2.12

suffix	background behind child	background	monkey	background	border
a	blue	blue	black	brown	yellow
b	blue, child is pink			black	red
c	deep red	deep red	black	black	green
d	yellow-orange	yellow-orange	brown	orange	black
e	yellow	yellow	brown	black	very deep red
f	orange			brown	blue
g		orange-red	black	brown	white
h		green	black		

EB2.13 & EB2.14

suffix	background	eagle
a	yellow	black
b	white	blue
c	white	pink
d	white	yellow
e	white	green
f	white	black

Notes :

1. EB2.14d not seen; 2. EB2.14f = green behind eagle (unlikely to exist for EB2.13).



Eduard EGE

Cat. No.	R	Cat. No.	R	Cat. No.	R	Cat. No.	R
See Note	1.	EG1.1a	60	EG1.2a	60	EG1.3a	60
EG1.4b	100	EG1.5a	60	EG1.6a	100		
EG1.9b	100	EG1.10a	100	EG1.11a	100		

Notes :

1. this design, although similar to other E EGE designs, is by Hans MAYERHOFER;
2. several of the above can be found with different sized margins : separate Cat. Nos. have not been given;
3. 'a' = cream paper; 'b' = dull cream paper, matt finish : the 'black' of 'a' and 'b' could be considered to be different shades.



Cat. No.	R	Cat. No.	R	Cat. No.	R
EG1.12a	40	EG1.13a	60	EG1.14a	40
EG1.15	30	EG1.16	30	EG1.17	30
				EG1.17A	30

Notes :

1. EG1.12 : 'a' = blue; 'b' = grey-green; 'c' = black;
2. EG1.13 : 'a' = brown (shades); 'b' = green (at least 4 shades);
3. EG1.14 : 'a' = orange; 'b' = green; 'c' = brown (all on white paper); 'd' = deep brown-black on cream paper – see poster stamps at the previous page.



Cat. No.	R	Cat. No.	R	Cat. No.	R
EG1.18a	30	EG1.19a	20	EG.19f	20

Notes :

1. EG1.18 (not seen imperforate)

suffix	colour
a	orange-brown
b	brown
c	pale brown
d	bistre (shades)
e	blue
f	green (shades)
g	black
h	grey (shades)

2. EG1.19

perforated

imperf.

suffix	colour	suffix	colour
a	green	a	green
b	orange	b	
c	pale brown	c	
d	black-brown	d	
e	black-brown on cream paper	e	black-brown on cream paper
f		f	red
g		g	grey-blue
h		h	brown
		j	purple

Note : only the colours which have been seen have been allocated a suffix : other colours may exist.



Hugo Max EICHLER

Cat. No.	R	Cat. No.	R	Cat. No.	R
EI1.1	40	EI1.2	40	EI1.3	40
EI1.4	40	EI1.5	30	EI1.6	30

Note : colour shades exist for EI1.1 - .4.



Georg EIERMANN

Cat. No.	R	Cat. No.	R	Cat. No.	R
EI2.1	40	EI2.2	40	EI2.3	40
EI2.4	40	EI2.5	40		

ELIOS

Cat. No.	R	Cat. No.	R	Cat. No.	R	Cat. No.	R
EL1.1a	60	EL1.2a	60	EL1.3a	60	EL1.4a	60
EL1.5a	60	EL1.6a	60	EL1.7a	60	EL1.8a	60
EL1.9a	60	EL1.10a	60	EL1.11a	60		
EL1.12a	60						

Notes :

1. 'a' = red on white paper; 'b' = red on cream paper; 'c' = black;
2. the poster stamps are at the next page.



The Catalogue Numbers of the above poster stamps are at the preceding page.



V FAINI

Cat. No.	Cat. No.	Cat. No.	Cat. No.	Cat. No.
FA1.1al	FA1.1bl	FA1.1cl	FA1.1dl	FA1.1el
FA1.2al	FA1.2bl	FA1.2cl	FA1.2dl	FA1.2el

Notes :

1. all the above poster stamps exist perforated – for the Cat. No. drop the final 'l' = imperforate;
2. for all the above poster stamps – 'Rarity' = 40 perforated and 40 imperf.



Cat. No.	R	Cat. No.	R	Cat. No.	R
FA1.3	40	FA1.4	40	FA1.5	40
FA1.6	40	FA1.7	40	FA1.8	40
FA1.9	20	FA1.10	80	FA1.11	150

Note : colour shades exist for FA1.9 and FA1.10.



F(abien) Fabiano 1883-1962

—FFALIANO—

Cat. No.	R	Cat. No.	R	Cat. No.	R	Cat. No.	R
FA2.1b	40	FA2.2a	40	FA2.3a	40	FA2.4b	40
FA2.5a	40	FA2.6b	40	FA2.7b	40	FA2.8b	40
FA2.9a	40	FA2.10b	40	FA2.11b	40	FA2.12b	40
						FA2.2b	40

Notes :

1. examples of both variants are illustrated : 'a' = no imprint; 'b' = imprint;
2. all suffix 'a' have a red symbol at the base of the design apart from FA2.9a where, as can be seen, just the name exists in black;
3. suffix 'b' : the symbol and name in grey exists on all designs except .1, .2, .9, .10 and .12;
4. there is one other difference between 'a' and 'b' : this is FA2.2 – both are illustrated.





F FEGBEUTEL

Cat. No.	R	Cat. No.	R	Cat. No.	R
FE1.1	100	FE1.2	100	FE1.3	100
FE1.4	100	FE1.5	100	FE1.6	100



Noël FONTANET

Cat. No.	R	Cat. No.	R	Cat. No.	R
FO1.1a1	40	FO1.1b2	40	FO1.2	40
FO1.3a	40	FO1.4	80		

Notes :

1. FO1.--1 = French text (Geneve) : FO1 --2 = German text (Genf);
2. for both languages : 'a' = purple; 'b' = black; 'c' = blue; 'd' = green;
3. FO1.2 exists on both white and cream paper;
4. FO1.3 : 'a' = blue; 'b' = brown; 'c' = green.



Fredrich K FRANCK (continued on next page)

Cat. No.	R
FR6.11P	80

Note : FR6.11P = pair imperf. between : the normal is FR6.1 'Rarity' 40.



Fredrich K FRANCK (continued)

Cat. No.	R	Cat. No.	R	Cat. No.	R
FR6.2	40	FR6.3	40	FR6.4	40
FR6.5	150	FR6.6	150	FR6.7	150
FR6.8	150	FR6.9	150		



Hugo FRANK

Cat. No.	R	Cat. No.	R	Cat. No.	R	Cat. No.	R
FR7.1	40	FR7.2	40	FR7.3	40		
FR7.4	40	FR7.5	40	FR7.6a	40	FR7.6b	40
FR7.2IT	60	FR7.3FR	60	FR7.1DU	60		

Notes :

1. FR7.1 - .6 is the set of 6 – FR7.6b is the only variant German text which has been seen – others may exist;
2. variants with Italian, French and Dutch texts have been seen – other languages may exist. Suffixes 'IT', 'FR' and 'DU'.



Max Adolf Peter FREY

Cat. No.	R	Cat. No.	R	Cat. No.	R
FR8.1al	100	FR8.2al	100		
FR8.3bl	100	FR8.4cl	100		
FR8.5cl	100	FR8.6dl	100	FR8.7el	100

Note : the colour suffix table for these poster stamps is at the next page.

Max Adolf Peter FREY (continued)

See poster stamps at the previous page : FR8

suffix	colour (black &)	.1	.2	.3	.4	.5	.6	.7
a	yellow	y	y					
b	blue			y				
c	pale blue-grey (shades)	y		y	y	y		
d	dull cream					y		
e	green -			y			y	
f	deep grey							y
g	pale grey-green		y				y	

Note : 'y' = this variant has been seen.

Leonhard Friedrich Waldemar FRIES (FR9)

(1881 - 1965)

As can be seen from the following pages, FRIES was a very prolific graphic designer. The first listed series is FR9.1 - .8. There are many different trader details added in the space at the bottom of the design. The known different trader details are indicated below as alpha. suffixes. To save space 1. only the first one or two words of a trader details are indicated to permit identification, and, 2. there is illustrated just one example of each of the 8 designs. (Many) other variants may (have) exist(ed). The 'Rarity' of each is 60 except FR9.1 which is 80 (tennis). Each variant is scarce and many may well be 'rarities' but insufficient examples have been seen to merit differentiation :

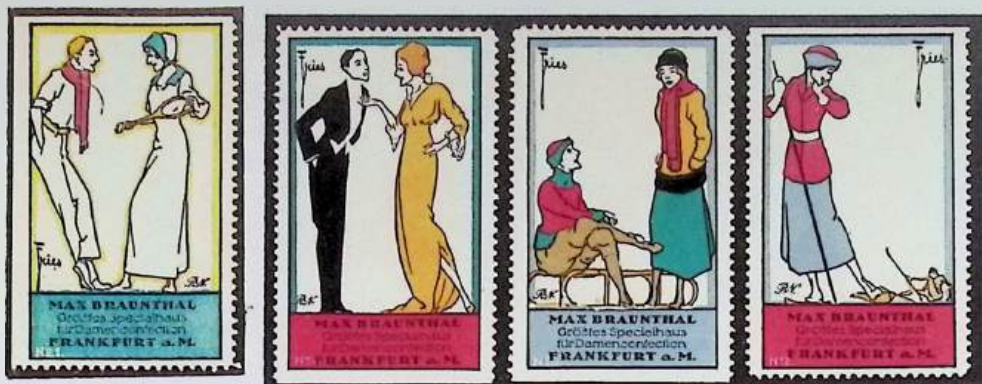
suffix	trader details	suffix	trader details
a	Anna Linz	o	Modehaus Hanke
b	M Berger	p	Moritz
c	Brüder Landauer	q	Müller & Ex
d	Braumann	r	Richard Nussbaum
e	Max Braunthal	s	N. V. Manufacturenhandel
f	Confection Stock	t	Salo Cohn
g	Gebr. Gerzon's	v	M Schneider
h	Grand Bazaar	w	Sperling
j	Hermann Herzfeld	x	Hermann Tietz
k	L Josephsohn	y	Leonhard Tietz
l	Kaufhaus Wilhelm	z	Warenhaus W Jacobsen
m	Koetting	aa	Max Wehle
n	Königsfeld		

The following poster stamps can be seen at the next page.

Cat. No.	R	Cat. No.	R	Cat. No.	R	Cat. No.	R
FR9.1e	80	FR9.2e	60	FR9.3e	60	FR9.4e	60
FR9.5e	60	FR9.6e	60	FR9.7e	60	FR9.8e	60

POSTER STAMPS – GRAPHIC ARTISTS – THE BEST OF THE REST

See preceding page for the Catalogue details of the following eight poster stamps.



Cat. No.	R	Cat. No.	R	Cat. No.	R
FR9.9a	60	FR9.9b	60	FR9.10	100



Cat. No.	R	Cat. No.	R	Cat. No.	R
FR9.11	40	FR9.12	30	FR9.13	30
FR9.14a	30	FR9.14bIP	60		
FR9.15	30	FR9.16a	30	FR9.17	30

Notes :

1. FR9.14 & .16 : 'a' = bright green; 'b' = grey-green;
2. FR9.14bIP = imperf. between.



Cat. No.	R	Cat. No.	R	Cat. No.	R
FR9.18	30	FR9.19	30	FR9.24	40
FR9.20	30	FR9.21	30	FR9.25	40
FR9.22	30	FR9.23	30	FR9.26	40
				FR9.27	40



*Die Sommer
wollen sich im Sommer!*
192 S. Verb. d. Dtsch. Berufsvereine, Bln. W 9

*Wichtig prüfen
spielt Unfälle vermeiden!*
142 S. Verb. d. Dtsch. Berufsvereine, Bln. W 9

**GIFTE
NUR
IN GIFTFLASCHEN**

276 S. Verb. d. Dtsch. Berufsvereine, Bln. W 9

Auch kleine Nagel sind gefährlich!

Nr. 8. Hauptverband d. gewerblich. Berufsvereine, Bln.



Cat. No.	R	Cat. No.	R	Cat. No.	R
FR9.28a	30	FR9.28b	40	FR9.28c	40
FR9.29	50	FR9.30a	30	FR9.30b	30
FR9.31	20	FR9.32a	40		

Notes :

1. FR9.29 : this is the only language variant seen in blue;
2. FR9.30 : 'a' with monogram; 'b' with no monogram – shades exist;
3. FR9.31 : there are different shades of red and differences of the monogram;
4. FR9.32 : 'a' = red; 'b' = violet-blue; 'c' = green; 'd' = orange.



Cat. No.	R	Cat. No.	R	Cat. No.	R
FR9.33a	40	FR9.34b	40	FR9.35a	40
FR9.36a	40	FR9.37a	40	FR9.38bC	60

Colours :

suffix	colours	suffix	colours
a	green & brown	c	violet & brown
b	black, grey & red	d	violet & grey

Cat. Nos.	suffix a	suffix b	suffix c	suffix d
FR9.33	y			
FR9.34		y	y	
FR9.35	y	y	y	
FR9.36	y		y	
FR9.37	y	y	y	y
FR9.38		y	y	

Note : 'y' = seen.

Trader variants seen (partial trader details only) added suffix 'A' etc. : 'Rarity' e@ 60 :

Trader	Cat. No.	Trader	Cat. No.
Bothe's Schuhwaren	FR9.35bA	Schuhfabrik Gebr. Ross	FR9.35bC & FR9.35cC
		" "	FR9.37bC & FR9.37cC
			FR9.38bC
Schuhwaren Engros	FR9.35bB	Tausende tragen	FR9.35cD
" "	FR9.37bB & 'c'		



Cat. No.	R	Cat. No.	R	Cat. No.	R	Cat. No.	R
FR9.39a	30	FR9.39b	30	FR9.39c	30	FR9.39d	30
FR9.39e	30	FR9.40	40	FR9.41a	30	FR9.41b	30
FR9.41c	30	FR9.41d	30	FR9.41e	30	FR9.41f	30

Notes :

1. the suffixes of FR9.39 are different from the suffixes of FR9.41;
2. no table of the different text details has been included : the different texts can be seen from the illustrations;
3. FR9.39b, FR9.41c & FR9.41f are thin paper;
4. green shades exist;
5. the majority of the different texts are in German.



A GARCIA

Cat. No.	R	Cat. No.	R	Cat. No.	R
GA1.1a	80	GA1.2b	60	GA1.3	60
GA1.4a	60	GA1.5	60	GA1.6	60
GA1.7	60	GA1.8	60		

Notes :

- GA1.1 : 'a' = blue; 'b' = red; 'c' = violet;
- GA1.2 : 'a' = blue; 'b' = red; 'c' = violet; 'd' = green; 'e' = chocolate;
- GA1.3 : 'a' = blue; 'b' = red; 'c' = chocolate;
- GA1.4 : 'a' = blue; 'b' = red; 'c' = green;
- GA1.5 – GA1.8 are after 1939 and would, typically, not be included in the Catalogue : however, they are very strong graphically.



E GARULLI

Cat. No.	R	Cat. No.	R	Cat. No.	R	Cat. No.	R
GA2.1a	30	GA2.2a	30	GA2.2b	30	GA2.2c	30
GA2.3l	80			GA2.4a1	40	GA2.4a2	40

Notes :

- GA2.1 : 'a' = eagle black, deep blue frame; 'b' = black & pale blue; 'c' = black & gold; 'd' = gold & blue;
- GA2.2 : the Italian Red Cross specialist catalogue details 7 variants;
- GA2.4 : the Italian Red Cross catalogue details at least 17 variants – 'a' are numbers BD8 and BD9 respectively in that Italian Catalogue;
- in the light of '2.' and '3.' a complete listing is not included in this 'Artist' Catalogue.



Cat. No.	R	Cat. No.	R	Cat. No.	R	Cat. No.	R
GA2.5bA	40	GA2.5bl	50	GA2.5bB	40	GA2.6a	40
GA2.7l	60	GA2.6b	50	GA2.8	40	GA2.8l	60
GA2.9	30	GA2.10	40	GA2.11	40	GA2.12	40
						GA2.13	40

Notes :

1. as can be seen, the basic design exists with and without a (large) Red Cross and with one (smaller) Red Cross on the clothing (chest or arm) or two Red Crosses or none (GA2.9);
2. see also 'Notes' at the previous page.



Curt GLASER

Cat. No.	R	Cat. No.	R	Cat. No.	R
GL1.1a	200	GL1.2b	200		
GL1.3a	100	GL1.4a	100	GL1.5a	100

Notes :

1. GL1.1 and GL1.2 : 'a' = red on white; 'b' = black on blue;
2. GL1.3 – GL1.14 (.6 to .14 at next page) : the following are the known traders (the full details are limited to two words to assist identification).

suffix	Trader's details	suffix	Trader's details
a	C F MURSCHEL jr.	d	Johs. Fabriz
b	ALBERT MAASBERG	e	Franz Krönner
c	Friedrich Löw	f	Fritz Brendicke



Cat. No.	R	Cat. No.	R	Cat. No.	R
GL1.6a	100	GL1.7a	100	GL1.8a	100
GL1.9a	100	GL1.10a	100	GL1.11a	100
GL1.12a	100	GL1.13a	100	GL1.14a	100

Note : see previous page for details of the (known) trader variants.



Franz Paul GLASS

Cat. No.	R	Cat. No.	R	Cat. No.	R	Cat. No.	R
GL2.1a	20	GL2.2a	20	GL2.3a	20	GL2.4a	20
GL2.5a	20	GL2.6a	20	GL2.7a	20	GL2.8a	20
						GL2.9	60

Note : see next page for (six of) these designs with a Hamburg address – suffix 'b'.



Cat. No.	R	Cat. No.	R	Cat. No.	R	Cat. No.	R
GL2.1b	20	GL2.2b	20	GL2.3b	20		
GL2.5b	20	GL2.6b	20	GL2.7b	20		
GL2.10	20	GL2.11	20	GL2.12	20	GL2.13	20

Note : GL2.4b and .8b have not been seen and may not exist.



Cat. No.	R	Cat. No.	R	Cat. No.	R	Cat. No.	R
GL2.14	20	GL2.15	20	GL2.16	20	GL2.17	20
GL2.18	20	GL2.19	20	GL2.20	20		
GL2.21	20	GL2.22	20	GL2.23	20		



Cat. No.	R	Cat. No.	R	Cat. No.	R
GL2.24	20	GL2.25	20	GL2.26	20
GL2.27	20	GL2.28	20	GL2.29	20
GL2.30a	40	GL2.30b	40	GL2.30c	40
				GL2.30d	40



Cat. No.	R	Cat. No.	R	Cat. No.	R
GL2.31	20	GL2.31a	80	GL2.32	30
GL2.33	30	GL2.34l	10	GL2.35a	30
GL2.36a	30	GL2.37a	30	GL2.38a	30

Notes : colour of sky :

1. .35 : 'a' = brown; 'b' = green; 'c' = yellow;
2. .36 : 'a' = purple; 'b' = orange; 'c' = violet;
3. .37 : 'a' = blue; 'b' = red; 'c' = green;
4. .38 : 'a' = brown; 'b' = grey; 'c' = blue.



Cat. No.	R	Cat. No.	R	Cat. No.	R
GL2.39a	30	GL2.40c	30	GL2.41a	40
GL2.42a	30	GL2.43	30	GL2.44	30
GL2.45	30	GL2.46l	10	GL2.47	60

Notes :

1. GL2.39 & .40 (background) : 'a' = red; 'b' = blue; 'c' = grey; 'd' = violet;
2. GL2.40 : 'c' & 'd' have not been seen and may not exist;
3. GL2.41 : 'a' = white apron; 'b' = red apron;
4. GL2.42 : (background) : 'a' = orange; 'b' = blue; 'c' = green; 'd' = 'brown';
5. GL2.43 : exists imperforate : suffix 'l' : 'Rarity' is 40;
6. GL2.44 : white or cream paper : exists imperforate : suffix 'l' : 'Rarity' is 40.



Cat. No.	R	Cat. No.	R	Cat. No.	R
GL2.48a	40	GL2.49b	40	GL2.50a1	40
GL2.51	40	GL2.52	40	GL2.53	40
GL2.54	40	GL2.55i	40	GL2.56	30
				GL2.50b2	40

Notes :

1. GL2.48 & .49 : (background) : 'a' = blue; 'b' = grey (shades); 'c' = green; 'd' = violet;
2. GL2.49 : 'c' & 'd' have not been seen and may not exist;
3. GL2.50_1 : first word in 2nd line is 'ECKE' ; '2' : first word is 'MAX' ;
4. GL2.50 (both types) : 'a' = grey; 'b' = green; 'c' = deep red; 'd' = deep mauve.



Cat. No.	R	Cat. No.	R	Cat. No.	R
GL2.57a	60	GL2.58a	60	GL2.59a	60
GL2.60	100	GL2.61	10	GL2.62	60
GL2.63l	80	GL2.64	30	GL2.65l	60

Notes :

1. GL2.57 : 'a' = red-brown; 'b' = blue; 'c' = green;
2. GL2.58 & .59 : (borders) : 'a' = brown; 'b' = blue; 'c' = green; 'd' = violet.



ROBERT KOCH
 1843 – 1910
 hat der Menschheit durch die Entdeckung des Tuberkel-Bazillus, des Cholera-Bazillus u. die Erforschung der Malaria unschätzbare Dienste erwiesen

MALTZYM
 ist in allen Apotheken u. Drogerien erhältlich

Diamalt A.-G. München.

Cat. No.	R	Cat. No.	R	Cat. No.	R	Cat. No.	R
GL2.66a	30	GL2.67a	30	GL2.68a	30	GL2.72a	40
GL2.69a	30	GL2.70a	30	GL2.71a	30	GL2.73a	40
GL2.74a	40	GL2.66b	30				

Notes :

1. GL2.66 – 71 : 'a' = no text on reverse; 'b' = text on reverse (all 6 designs);
2. GL2.72 : (background) : 'a' = green; 'b' = blue; 'c' = orange; 'd' = red-brown;
3. GL2.73 : (horses, etc.) : 'a' = green; 'b' = silver; 'c' = grey; 'd' = brown;
4. GL2.74 : (most exist on both white & cream papers) : 'a' = purple-brown; 'b' = violet; 'c' = orange; 'd' = green; 'e' = sage green; 'f' = blue.



STEFANIE
S GLAX

(1865-1952)

Cat. No.	R	Cat. No.	R	Cat. No.	R	Cat. No.	R
GL3.1	60	GL3.2	60	GL3.3	60		
GL3.4	60	GL3.5	60	GL3.6	60		
GL3.7a	40	GL3.7b	40	GL3.7c	40	GL3.8	40

Notes :

1. GL3.7a exists imperf. – add suffix 'I' : 'Rarity' is 50;
2. GL3.7b exists : 'Rarity' is 40.



Alfred GREINER

Cat. No.	R	Cat. No.	R	Cat. No.	R
GR1.1a	60	GR1.2a	60	GR1.3a	60
GR1.4	30			GR1.5	30

Note : Alfred GREINER has been included in view of the three dated events poster stamps : 'a' = German texts; 'b' = Italian texts; 'c' = French texts; 'd' = Esperanto texts. The poster stamps with German texts are not scarce. In the 1990s an archive of a postcard manufacturer in Munich was sold. In the archive were 15 sheets of 12 different poster stamps commemorating major events (including the Titanic). Five of each of these (unknown) sheets, including the above 3 poster stamps, had Italian, French and Esperanto texts. Two each of the sheets are in Museums. Therefore only three copies of all 12 poster stamps in the three different languages can exist in 'public hands'. Therefore, the 'Rarity' for the above three different poster stamps in the three languages is 500 each.

The following 11 poster stamps are at the next page :

Anton GRIEB

Cat. No.	R	Cat. No.	R	Cat. No.	R
GR2.1c	60	GR2.2b	60	GR2.3a	60
GR2.4b	60	GR2.5a	60	GR2.6a	60
GR2.7	40	GR2.8	40	GR2.9	40
		GR2.10	40	GR2.11	40

Notes :

1. GR2.1 - .6 : 'a' = white; 'b' = bright green; 'c' = blue green;
2. GR2.7 - .11 : the sky varies from yellow to orange.



The Catalogue Numbers of these poster stamps are at the previous page.



Alios GRUBER

Cat. No.	R	Cat. No.	R	Cat. No.	R	Cat. No.	R
GR3.1	60	GR3.2	60	GR3.3.3	60	GR3.7a	60
GR3.4	60	GR3.5	60	GR3.6	60	GR3.8a	60
GR3.9b	60	GR3.10c	60	GR3.11d	60	GR3.12e	60

Notes :

1. GR3.1 - .6 all exist imperf. : each has a 'Rarity' of 80;
2. GR3.1SHEET : is the Cat. No. of the sheet of 6 : 'Rarity' is 400, Imperf 'Rarity' is 500;
3. GR3.7 - .12 : 'a' = white; 'b' = mauve; 'c' = very deep red; 'd' = green; 'e' = yellow.



Fritz GRUBER

Cat. No.	R	Cat. No.	R	Cat. No.	R
GR4.1a	60	GR4.2b	60	GR4.3c	60
GR4.4d	60	GR4.5a	60	GR4.6b	60

Note : (background) : 'a' = white; 'b' = cream; 'c' = pale pink; 'd' = pale blue.

Theodor GRUST

Cat. No.	R	Cat. No.	R	Cat. No.	R
GR5.1a	40	GR5.2a	40	GR5.3b	40
GR5.4	40	GR5.5	40	GR5.1aERR	60
GR5.5P1	80	GR5.3P2	80	GR5.3P3	80

Notes :

1. GR5.1, .2 and .3 : 'a' = red dresses; 'b' = blue dresses;
2. GR5._ERR = misplaced green colour;
3. GR5._P1 = black proof on white shiny surfaced paper (all 5 designs);
4. GR5._P2 = black proof on red shiny surfaced paper (all 5 designs);
5. GR5._P3 = black proof on grey shiny surfaced paper (all 5 designs);
6. the illustrations are at the following page.



The Catalogue Numbers of these poster stamps are at the previous page.





Theodor GRUST (continued)

Cat. No.	R
GR5.6a	40

suffix	colour paper	colour design	suffix	colour paper	colour design
a	white	brown	j	blue	brown
b	cream	orange	k	deep yellow	black
c	white	grey	l	violet blue	black
d	cream	grey	m	yellow	black
e	grey	cream	n	pale green	brown
f	deep red	black	o	pale blue	pale green
g	deep orange	black			
h	green	brown			
i	blue	black			

Notes :

1. the following exist imperforate : add 'l' after alpha 'f', 'l', 'm', 'n' and 'o';
2. the following have been seen only as imperf. 'm', 'n', and 'o'.



H GULFRID

Cat. No.	R	Cat. No.	R	Cat. No.	R	Cat. No.	R
GU1.1	60	GU1.2	60	GU1.3	60	GU1.4	60
						GU1.5	60





Hans GYENIS

Cat. No.	R	Cat. No.	R	Cat. No.	R
GY1.1a	40	GY1.2a	40	GY1.3a	40
GY1.4a	40	GY1.5a	40	GY1.6a	40

Notes :

1. (colours) : 'a' = orange; 'b' = green; 'c' = brown; 'd' = black-brown on cream;
2. the 'Rarity' for all suffix 'd' poster stamps is 80.