

# THE POSTER STAMP BULLETIN

PUBLISHED IN THE INTEREST OF POSTER STAMP COLLECTORS THE WORLD OVER

Editor: Walter Schmidt 3654 Upper Applegate Road, Jacksonville, Oregon 97530  
Email pssoc@charter.net

Number 266

March 2017

## EDITORIAL:

Once again it is time to say, "Mea Culpa." #1 listed in the January auction has as much chance of having been designed by Mucha as the following has of being designed by Leonardo de Vinci.



The vendor was wrong and we were wrong to assume that he knew what he was talking about. Mea Culpa!

## WE GET EMAILS

Our friend, Peter Lehmann, sent us an interesting Email about a Pregnant Poster Stamp.



Peter writes: "Some 20 years ago I found a poster stamp from the "Silesian Mill Factories" in Breslaw which portrayed all the other advertising poster stamps of the same company (see the central piece in my scan). This multiple poster stamp is surrounded by the printed copies of the poster stamps in the center stamp. Plus one oddity: the poster stamp with the ice skating couple has been issued to advertise two different factories. On the left for "Schlesche Muhlenwerkke AG Breslau" and next to it an issue propogating the products of "Schottwitzer Kunstmuhle". I wonder if we know more of this kind of a "mother-poster stamp" showing multiple poster stamps which then have been produced as a single item".

**WE GET ARTICLES**

**It is well documented that Charles has fallen into the pit of never ending desire. Still falling, he has sent us a fascination article for the Bulletin. Bless you, Charles. You have made the Poster Stamp Bulletin GREAT again.**

In 2003, Charles Kiddle published a poster stamp catalogue

'THE WORLD'S FAIR ST LOUIS 1904'.

(The Louisiana Purchase Centennial Exposition and site of the 1904 Olympic Games).

The Catalogue was published both as a record of the poster stamps and to mark 100 years since the Fair was held. Included in the Catalogue, at Page 68, was poster stamp 'Cat. No. 7.3'. The text was "KATY" "The World's Fair" and "ST LOUIS 1904".

Prior to this 2003 Catalogue, the best known reference to the poster stamp was an entry in the well known 1914 'CATALOGUE DESCRIPTIF des TIMBRES COMMEMORATIFS' by MM. CAZIN & ROCHAS. The poster stamp is illustrated below.

Both in France and the United Kingdom, the assumption was that this poster stamp was a 'one off' issued specifically for the Fair. Indeed, at the meeting of poster stamp collectors in St Louis in 2004 no comment was made to the contrary. Further, the significance of "KATY" was not known nor, again, commented upon.

At the following pages are poster stamps which were discovered by Robert C Bradbury in a c.1904 collection of poster stamps in a contemporary album.

Immediately, it was obvious that "KATY" referred to The **MISSOURI-KANSAS-TEXAS RAILROAD**.

**THE MISSOURI-KANSAS-TEXAS RAILROAD** was incorporated on 23 May 1870. In its earliest days the MKT was commonly referred to as "the K-T", which was its stock exchange symbol. This common designation soon evolved into "The Katy".

The Katy was the first railroad to enter Texas from the north. Eventually, the Katy's core system would grow to link Kansas City and St Louis, Missouri, Tulsa and Oklahoma City, Oklahoma, Fort Worth, Dallas, Waco, Temple, Austin, San Antonio, Houston and Galveston, Texas.



Section 3 :

Cat. No. 7.3

### THE MISSOURI-KANSAS-TEXAS RAILROAD

At the following four pages are the known poster stamps. Almost certainly, others existed and, even now, after 105 years others may be discovered.

There are two (known) series. There may well have been a third series if the "KATY", "The World's Fair" and "ST LOUIS 1904" design was part of another series.

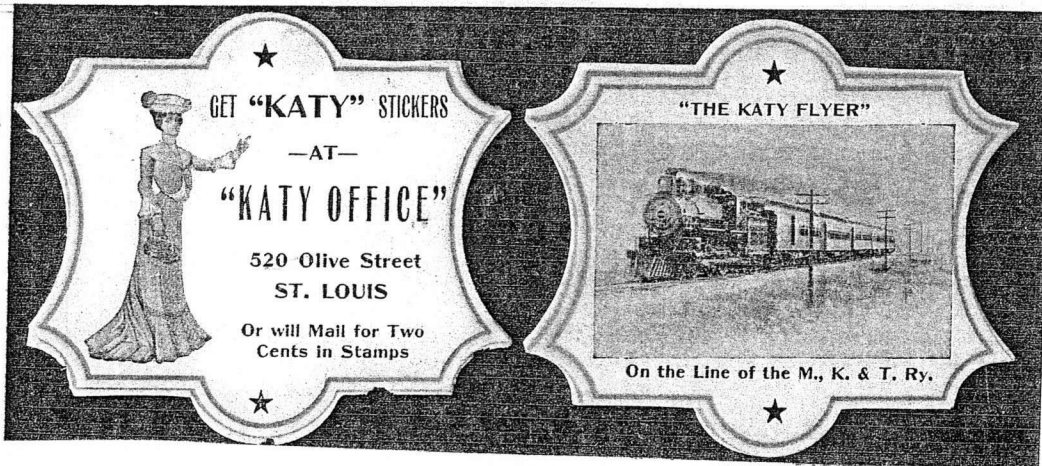
More likely, for 1904, the wording of the 'first' design of the 'standard' series was modified specifically for the World's Fair. A further possibility is explored below. 17 different designs are known and these are detailed below. 17 is an unlikely number for a series and, as indicated above, others may have existed and may, even now, be discovered.

The detail of all the known poster stamps are given below together with the illustrated poster stamps (where they have been seen). The Robert C. Bradbury numbering system has been used. There are two main differences. The differences have been given arbitrary 'A' – solid black star and the middle top and bottom of each poster stamp design; and 'B' – a black circle enclosing a white star, again at the middle top and bottom of each poster stamp design. A further assumption is that the same 17 designs were used for both 'A' and 'B'. An unresolved aspect is why the text of 'B1' indicates 'Will Mail a set (12) for Two Cents in Stamps' when, on the available evidence there are at least 17 different designs. One possibility may be that those with either "On the line of the M.,K, & T. Ry." at the bottom of the design or those with differing texts at the base were a 'set'. If so, ignoring 'A1' and 'B1' there would have to be 11 designs. For the former, 10 are known and, for the latter, 8.

### THE MISSOURI-KANSAS-TEXAS RAILROAD

#### Series 'A'

Section 3 :  
Cat. No. 7.3A



A1

A2

WORLD'S FAIR : ST LOUIS 1904

THE MISSOURI-KANSAS-TEXAS RAILROAD

Series 'A' continued

A3

★  
IN HIS GLORY, In Texas.

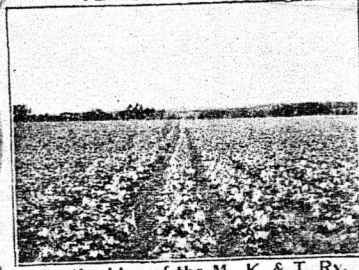


On the Line of the M., K. & T. Ry.



A4

★  
TEXAS COTTON FIELD.

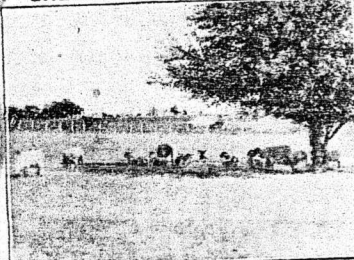


On the Line of the M., K. & T. Ry.



A5

★  
SHEEP RANCH, Greenville, Tex.

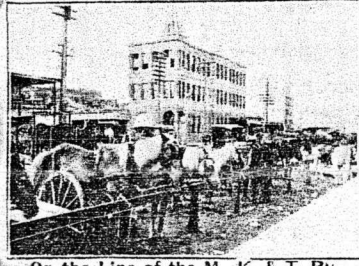


On the Line of the M., K. & T. Ry.



A6

★  
SATURDAY EVENING, Taylor, Tex.

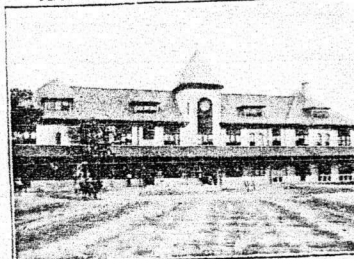


On the Line of the M., K. & T. Ry.



A7

★  
"KATY" STATION, Parsons, Kas.

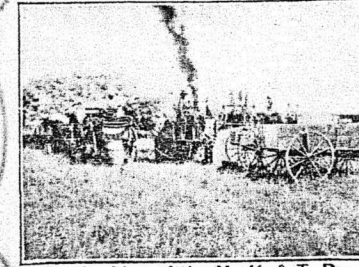


On the Line of the M., K. & T. Ry.



A8

★  
THRESHING WHEAT Parsons, Kas.



On the Line of the M., K. & T. Ry.



A9

★  
PICKING PEACHES IN TEXAS.

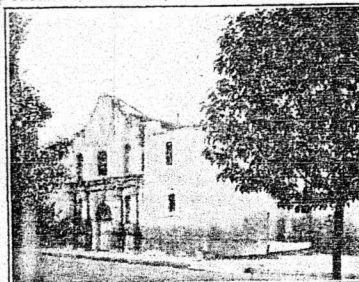


On the Line of the M., K. & T. Ry.



A10

★  
The Alamo, San Antonio, Tex., where Davy Crockett Fell



Reached by the M., K. & T. Ry.





A12



### More Information about Real Photo Stamps

John H. Bloor  
February 6, 2017

On the front page of Poster Stamp Bulletin number 265 (February 2017), Walter talks about an envelope of real photo stamps from El Paso, Texas. I collect these whenever I see them. In my small collection, envelopes can be pink (as with Walter's), blue, or orange. Many of the envelopes were marked "Apeda Studio, Inc., New York" and this was found on some of the inserts as well. In a story on the web, Apeda was described as a large commercial studio that existed from 1906 to 1990. No mention is made of their producing photo stamps, suggesting that it was a minor sideline for the company.

Some of the envelopes had no name on the front and others were personalized with the names of local retailers. These included Ekday Shop (New Orleans), Bingham News Agency (Salt Lake City), Zellerbach Paper Co. (Sacramento), and others. The number of stamps in a set was indicated on the front of the envelope as 16, 18, or 32.

The insert with the New Orleans stamps describes how you can order photo stamps "from the store where you bought this envelope", using your own photograph, for "One Dollar per 100". The stamps were gummed and perforated and took about a week to make. Sounds like an early version of Shutterfly!

Other companies published real photo stamps but, based on the number that I've seen, it appears that none were as prolific as Apeda. In my collection there are two booklets published by the Photo-Stamp Company, Saginaw, Michigan; and six booklets published by the Stamp Guild, New York City, copyright 1935. The stamps in both of these types of booklets are much more like true poster stamps than the glossy, photograph-like ones issued by Apeda. There is also a booklet of photo stamps from the 1937 Paris Exposition, published by H. Chipault, France. I'm not sure when the Apeda stamps were printed but one of the inserts has a copyright date of 1940.

I don't know the number of different sets published by Apeda but in browsing the internet I've seen perhaps a half dozen that I don't have. These are usually associated with questions such as "what are these stamps?" and "who published them?" An insert sheet with one set of stamps has a partial list of available sets which includes Fighting Planes of the U.S.A., Capitol Cities of the U.S.A. (3 sets), Catskill Mountains, Homes of Film Celebrities, Manitou Springs (Colorado), and more. Currently I have 36 sets, all but three of them with envelopes. One that I don't have is El Paso, Texas, the one that Walter found! I'm always looking for more of these interesting poster stamps.

**THE MARCH AUCTION**

This auction has something of interest for just about everyone. The vendor has placed a \$3.00 reserve on all lots. This seems more than fair to us. First responders will receive tie bids and the auction ends on the last day of the month.

**Wiedtemann & Co. Wiedtemann & Co.**



1 Luft, Frankfurt, Herrmannstr. 48, Schneider, Antel, eleganter Garderobe.



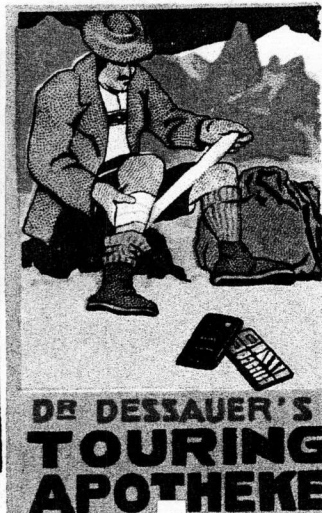
2



3 Freiburg, Breisgau



4 Freiburg, Breisgau



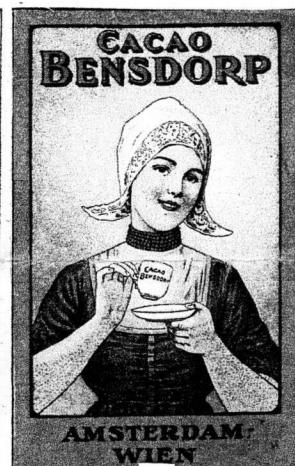
5



6



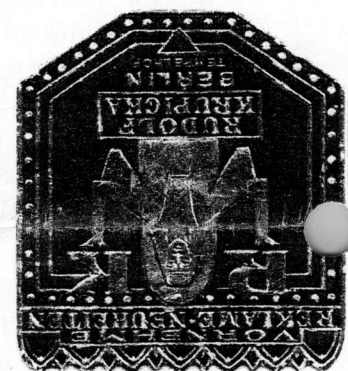
7



8



9



10



11



12



13



14



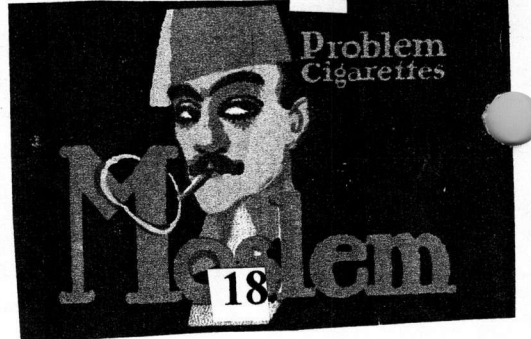
15



16



17



18

## ADVERTISING

### POSTER STAMPS BOUGHT AND SOLD

**WORLD POSTER STAMPS** maintains the largest holding of poster stamps up to 1945 (incorporating **THE PRINTERS STONE LTD**). We respond to 'want lists'-please be as specific as possible- with either photocopied selections or scans. Payment can be made by US check, credit card or Paypal.

Contact Charles Kiddle, P.O. Box 13, Mill House Wheatley Lane, Binsted, Hampshire,  
GU34 4PG, United Kingdom

or

Email CharlesKiddle@btconnect.com

### ALWAYS WANTED

Women's Suffrage & Political Seals, WWI and WWII seals, Baseball Seals, Pins, Cards, Sports memorabilia of any type. Political Pins, Ribbons, Banners, Old Stocks and Bonds, wanted. High prices paid. Please contact:

**PAUL LONGO, P.O. BOX 5502 MAGNOLIA, MA 01930 OR PHONE (978) 525 2290.**

**MR. ICE CREAM** desires ice cream and soda fountain poster stamps from around the world. Poster stamps that picture ice cream, soda fountains, ice cream machines, or people enjoying ice cream are preferred. Also looking for ice cream poster stamps on envelopes. A banana split reward is offered for any graphically pleasing poster stamp that I buy that I do not already have in my collection.

**ALLAN "MR. ICE CREAM" MELLIS**

1115 West Montana

Chicago IL, 60614-2220 USA

Phone 773-327-9123 Email mellisfamily@rcn.com

### Wanted

**Illustrated Poster Stamp** articles of interest for the **Poster Stamp Bulletin**. Please remember that you too can become obscurely famous. Why? Because all past **Poster Stamp Bulletins** can all be found in the **British Philatelic Library**. Come on! Just a one page illustrated article.

### WANTED

**INFORMATION ON POSTER STAMP NEWS, AUCTION PRICES, FOREIGN AND DOMESTIC, NEW PUBLICATIONS AND CATALOGS, ARTICLES OF INTEREST, UNUSUAL COLLECTING INTEREST, COMMENTS AND CORRECTIONS, LETTERS TO THE EDITOR. FINDING NEW MEMBERS, FAVORITE POSTER STAMP DESIGNS, HUMOROUS AND WITTY DESIGNS, MEMBER PARTICIPATION TO DELIGHT AND INTEREST OTHER MEMBERS AND OTHER STUFF AS WELL. YOUR EDITOR EAGERLY AWAITS YOUR RESPONSE. YOUR HELP WILL DANGLE THE CARROT IN FRONT OF THE DONKEY WE ARE RIDING TO KEEP US BOTH GOING.**

PAG.

QUESTION?  
ARE THESE RARITIES?  
(Does anyone know?)



**JANUARY AUCTION RESULTS**

3. \$10.50, 6. \$3.25, 7. \$7.00, 8. \$3.25, 9. \$3.25, 11. \$3.25, 12. \$3.25, 13. \$3.25, 14. \$3.25,  
16. \$20.50, 18. \$5.50, 20. \$2.00, 21. \$4.00, 22. \$3.00, 24. \$5.50, 25. \$4.00, 28. \$5.00,  
31. \$5.00, 35. \$4.25, 27. \$10.50, 43. \$12.75, 45. \$5.00, 46. \$5.00, 49. \$7.00, 50. \$10.75,  
51. \$5.00, 52. \$8.25.

THE POSTER STAMP BULLETIN  
Walter Schmidt, Editor  
3654 Upper Applegate Road  
Jacksonville, Oregon, 97530 USA

