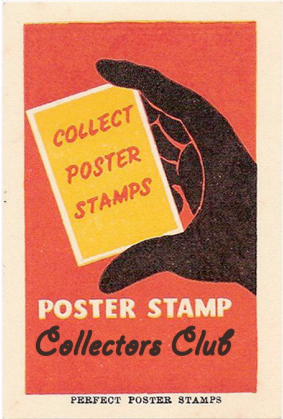
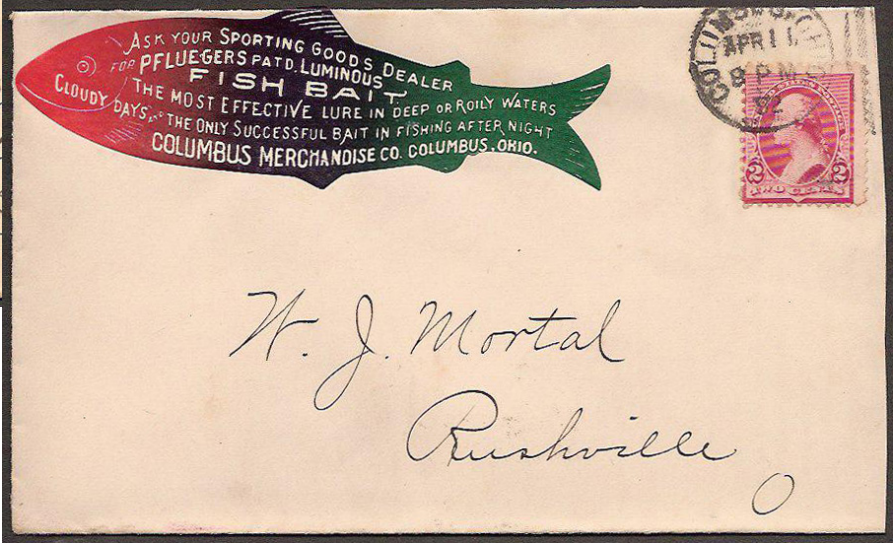


The Journal of the Poster Stamp Collectors Club



Winter 2009
Vol. IV No. 3
Whole # 15

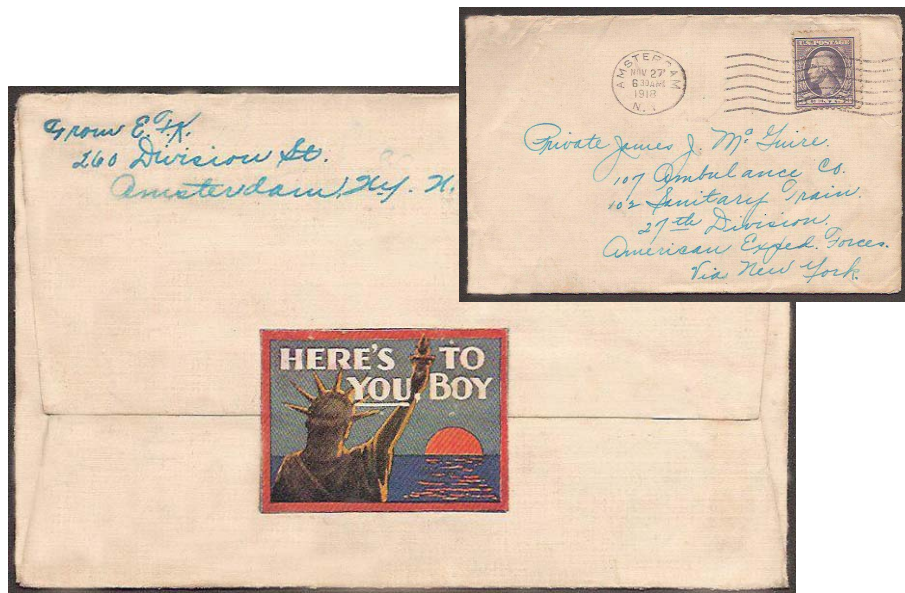


APS #255.

The die-cut fish shapes are identical, being stock items. What differs is the use of color and typography on these poster stamps that make a play on the name or the product.

Table of Contents

President's Message	p. 1	The DEPS	Dick Warren p. 4
From the Editor	p. 2	1914 Norwegian Album	p. 7
A Word from Walter; Miscellany	p. 3	"The Katy"	Charles Kiddle p. 11
Nick Follansbee's Desert Island Stamp	p. 4		



Nick's Desert Island Stamp, see p. 4



In November (p. 32) and December (p. 28) 1918, the *Ladies' Home Journal* published a full page of patriotic labels meant to be cut out and used on envelopes. They had a usual magazine page printed on the reverse. They may well have been available by order as I have some with no printing on the reverse but they, too, are not gummed. In any event, I have found one on cover so people really did use them. It is from the November set, the second stamp in the bottom row of the sheet.



Peter Hannes Lehman sent 25 stamps from a long set of pre-WW1 German colonial issues. This shows delivery of raw poppies for making opium in Kiautschou, China.



A Word from Walter, see p. 3



Ken Eadie sent this fabulous 1927 Czech Modernist stamp used on cover. The design reminds me of the sort of mixed media collages that Herbert Matter was famous for.

PSCC Officers & Directors Listing

Art Groten – President & Journal Editor – PO Box 30, Fishkill, NY 12524

Nick Follansbee – Vice-President – P.O. Box 3210, Ashland, OR 97520

Richard Warren – Secretary/Treasurer – PO Box 208, Ark, VA 23003

Chip Blumberg – Board of Directors/Awards – PO Box 1144, Bala Cynwyd, PA 19004

Charles Kiddle – Board of Directors – PO Box 13, Alton, Hants, UK GU34 4DW

John Nunes – Board of Directors – 80 Fredericks Road, Scotia, NY 12302-5727

Tom Minor – Board of Directors – 7374 Arlington Dr., St. Louis, MO 63117-2242

Don Bodow – Publications & Webmaster – PO Box 270458, San Diego, CA 92198

(artgroten@optonline.net)

(nfollansbee@uci.net)

(dickw3@gmail.com)

(thefoldedletter@verizon.net)

(charleskiddle@btconnect.com)

(nunesnook@aol.com)

(mr.science@sbcglobal.net)

(dbodow1@san.rr.com)

Honorary Vice-Presidents: Esbjorn Janson, Francis Kiddle, Walter Schmidt, Kuno Sollors

International Representatives: Karoly Balazs (Hungary), Eduardo Escalada-Goicoechea (Spain), Dr. Richard Grosse (France), Alan Jackson (New Zealand), Mrs. S. Petersson (Denmark), Jacob A. van Dijk (Netherlands), Manfred Zollickhofer (Germany)

President's Corner...Art Groten

My call for someone to take charge of a PSCC auction has been answered by member W.J. Jannse of the Netherlands. He would deal electronically with the administrative aspects but we still need someone, preferably in the U.S. where the bulk of our members reside, to handle the physical aspects. Anyone interested? Money earned by the Club will help towards my goal of an all-color Journal. Once we have the personnel in place we will move forward. Any and all comments are welcome.

Another reminder that our next meeting will be in St. Louis in February 25-27, 2011. Plan ahead!

Dick Warren's DEPS project is moving ahead at speed now. A full report appears on p. 5.

Membership News:

New members:

#141 Alfred Paul Arruda, 128 Meridian St., Fall River, MA 02720

L-05 Anne Champagne, Library, Art Institute of Chicago, 111 S. Michigan Ave, Chicago, IL 60603

L-06 David R Beech, Philatelic Collections, The British Library, 96 Euston Rd., London NW1 2DB UK

Returning member:

#048 R. Wayne Oliver, Leonia, NJ 07605

Address change:

#064 Richard M. Sitron, 380 S. State Road 434, Ste 1004-268, Altamonte Springs, FL 32714

The document at the right is on the stationery of the Belgian Consul in Constantinople (recto) and was sent to the Italian Consul who responded the same day, Jan. 31, 1907. A few days later, Feb. 15, one of Georges Lemmen's fabulous poster stamps for the International Exposition of Home Design was tied to the page by "per mostrato" (as a sample). Anyone have any idea why?



From the Editor...Art Groten

I have quite a number of brief notes about single stamps or sets. I need more substantive articles lest the Journal become merely show-and-tell. So, please, send me something. That means you!

The auction in Germany by Walter Christ of Christ-Stamps, devoted entirely to aviation and zeppelin poster stamps (and a bit of other ephemera). was a first. Not all lots sold but many had significant competition resulting in impressive results. Examples: lot 325, estimated at E32, sold for E330 and lot 498 for for E100. We hope this will not be the last such specialty auction.



A major offering of Third Reich poster stamps, sold by Hartmut Raith on November 7, 2009, realized E12,100 to an unknown buyer.

Mea culpa: Ray Petersen, Sarah Petersson and Esbjorn Janson all pointed ut that the "Danish" item I showed in #14, p. 3, is in fact Swedish for King Gustav V's Fund. It is a receipt for a contribution and, by definition, not a poster stamp. Harumpff!

Peter Hannes Lehmann sent some comments about Harris Leonard's article on "The Devil in Poster Stamps" in #14 p. 4:

1) Harris talks about the "change (of the Germans) in the perception of evil" based on a misconception that "most of these (devil) poster stamps [the ones he shows] were produced between 1914 and 1916 in Germany." In fact, the Faust stamp (Fig. 1) is the only one produced in 1916. The others are all from well before WWI. So his notion that WWI was responsible for a new and different perception of the devil in German eyes is not supported. If there was such a change the cause is not clear from this scant evidence.

2) Fig 14 shows two [printers'] devils rolling a rubber roller over some perforated paper in U. Levi's print shop at Stuttgart. They are not producing "paper" but the poster stamps (the small perforated objects on the press) for which U. Levi was famous.

3) In his second to last paragraph Harris refers to the sheet of 9 poster stamps showing the devil being hunted by several persecutors. He says: "This sheet is written in plattdeutsch, a low form of German language found in the local dialect of Bavaria." That is not correct: it is in High German (Hochdeutsch). "Plattdeutsch" is not a "Bavarian dialect" but a different language used in Northern Germany, 500 miles from Bavaria. Further, the sheet is advertising insulated fire-resistant pipes: if one uses them, he will be protected against any devilish problems like short-circuits provoking fire and other hazards. The company monogram shown is ""FIMW", not "FMWI" and stands for "Fränkische Isolierrohr- und Metallwaren-Werke" (Gebr. Kirchner in Königsberg, Bayern).

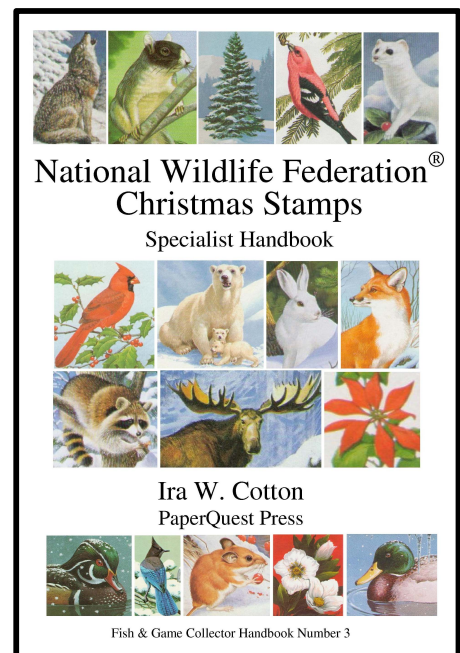
New Handbook on National Wildlife Federation® Christmas Stamps

While these are not considered poster stamps some are quite lovely and, no doubt, some members collect them.

National Wildlife Federation® Christmas stamps were issued from 1956 through 2000 to promote and raise funds for wildlife conservation. These stamps are interesting because of their colorful designs by leading wildlife artists. Over 80 sheets and booklets are illustrated in full color. The handbook is available in both saddle-stitched and spiral bindings.



Collectors can order and pay on-line at www.PaperQuestPress.com or download and mail an order form at the site. Prices are \$38 for the saddle-stitched binding and \$39.50 for the spiral binding, each plus \$5 shipping and handling. The cover, Table of Contents, and a sample page may be viewed through the website.

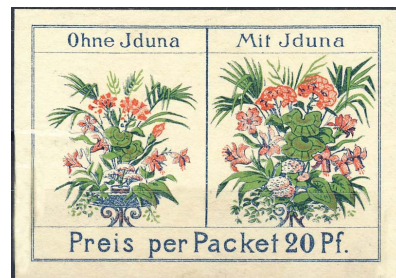


A Word from Walter...Walter Schmidt

Every now and then I come upon a bit of colored paper known as a wrapping seal. Perhaps the most famous (at least to those of us in the West) can be found on every box of See's candy. The Bernhardt seal from Taylor of Toronto was new to me and I think it is a marvelous example of an eye-catching design (see inside front cover). No doubt it refers to the famous Sarah who toured the Americas in the early 20th century. I wonder: does any PSCC member collect such things?

Follow-up and Miscellany...Art Groten

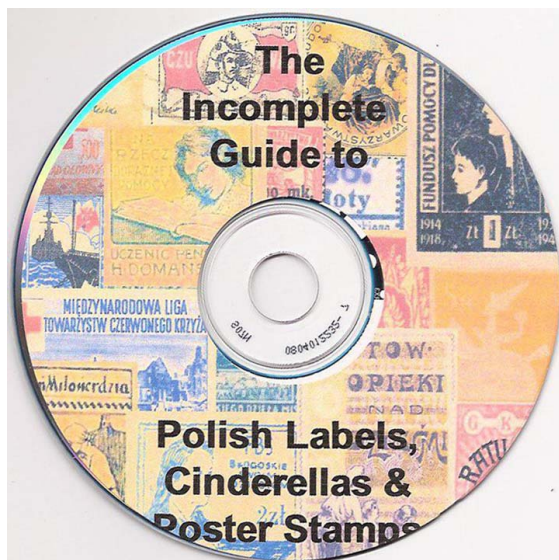
Peter Hannes Lehmann has sent two more Before/after stamps. First, using 'Lebewohl' will turn an ordeal (vorher/before) into a delight (nachher/after). And, using Jduna fertilizer will result in better blooms: ohne (without) vs. mit (with).



Charles Kiddle asked a friend in Japan about the stamp at the right. It is clear from the English text who issued it and where, but when? There is no information about the Japan Club itself. Kidomura was the name of the village between 1889 and 1956. Futagabun became a county in 1896. From both the old style Chinese characters used in the Japanese text translated as "Come to Japan!"), the stamp predates WWII and, of course, after the onset of WWII Japan would not have issued a call for foreign visitors in English. This, taken with the printing and style, places the stamp in the 1910-20 time period. Every stamp tells a story!



Chris Kulpinski has prepared a CD that he calls *The Incomplete Guide to Polish Labels, Cinderellas & Poster Stamps*. It is his initial attempt (and the first I am aware of) at organizing this material and he is actively seeking input from other collectors with similar interests. It is fully illustrated in color with as much information about each stamp as he has. Of great use is a section on the various abbreviations found on these stamps, what they stand for and what they mean. There are 48 chapters covering every conceivable cinderella category. Price is \$15 postpaid on his www.PolishPhilatelicLiterature.com. He can be reached at ctk@kulpinski.net or at 9350 E. Palm Tree Dr., Scottsdale AZ 85255-5514.



Nick Follansbee's Desert Island Stamp...

“Kaffee Messmer” (see inside front cover) shows an African man (depicted without exaggeration or caricature) holding a cup of coffee and smoking a cigarette, calmly savoring the moment. For me, the appeal is not thematic: I don’t particularly care for coffee and I don’t smoke. Rather, I think this design, in terms of composition and color, is worthy of a great artist.

The image is very boldly composed within a dark blue border (it is narrower on the original poster), and the unified relationship between image and border does much to empower and enliven the composition. The man’s head and hand nearly touch the border, creating visual tension, while his back leans into and merges with it. Shape is the primary visual element. Detail is more suggested than drawn; eye and an earring are mere glints of white. Even in black and white, the composition would have ample power, but it is the color that provides the warmth and richness that perhaps might put one in the mood for sampling whatever it is that fellow has in that cup.

The 1910 poster (listed in the reference *Das fruhe Plakat* as number 1310), and this stamp derived from it, are apparently the only excursion into commercial art by the celebrated painter and printmaker, Karl Hofer. Hofer was born in Karlsruhe, 11 October 1878 and achieved fame as one of the leading exponents of German Expressionism during the 1920s and 30s. Most of his work is considerably more challenging than his beautiful poster, and as with most of the better artists of his time, his work was banned as “degenerate” by the Nazis who also fired him from his teaching post. After the war, he once again took a prominent place in the artistic life of Germany, and was named the director of the Hochschule fur Bildenden Kunst as well as President of the Berlin Academy. He died in Berlin April 3rd, 1955.

I was familiar with the poster but had no idea there was a stamp until I ran across this example. Perhaps the thrill of discovery still feeds my continuing pleasure from admiring it. I have not encountered another and imagine it may be rare as well as beautiful.



Ed.: Nick has also sent a flyer for Adolph Selige, the printer of the set of 6 labels for the 1904 St. Louis Fair that includes the design by Mucha above. I am able to show both perf and imperf stamps.



The Dated Event Poster Stamp (DEPS) Interactive Database Revealed...Dick Warren

For the Dated Event collector, one of the first questions that arises is 'what is this....?', followed closely by 'what is it worth....?' It is true for stamps, as for most collectibles: there is a need to identify and classify. We wonder if this stamp is known to other collectors ... are there others like it, or similar ... where can I find out?

The ability to identify stamps is fundamental to the sustained growth of the stamp hobby. What is popular to collect is often determined by the very existence of catalogs or listings. In our Poster Stamp hobby, much of the future growth of interest and understanding will depend on the ability to define what stamps exist, and what is their availability and value. The hobby is suppressed in the absence of this knowledge.

Several listings or catalogs exist within topical categories such as aviation events, stamp shows, charities, patriotic and political propaganda, etc. One prominent catalog has been the 1914 relative-value guide of dated events by Cazin and Roches (C&R), printed in French, without illustrations. Copied editions have been available in recent times. But who among us has not wished for something more effective, accurate, timely.... and illustrated.

In 2004, a database approach to cataloging was presented which would update the entries found in the C&R catalog, illustrate, correct and expand them. What has evolved from that early start is now available for every collector on the internet in the form of the Dated Event Poster Stamp (DEPS) interactive database, which is the subject of this article.

In the interval, under the selfless leadership of Stewart Gardiner of Scotland, a revised, illustrated, English language edition of C&R is being produced, in dated sections through 1913 or 1914, with the support of a dozen respected collectors from many countries. This is a product of excellent scholarship and a remarkable coming together in support of a mutual project.

The digital compilation of data proceeded slowly, until recently, when data from Stewart's C&R project was made available. It came time, about a year ago, to make the database available to everyone, using the world wide web (www). The use of advanced software made a number of new features possible, notably, the ability of the viewer to interact with the data itself, not specifically to alter it, but to add personal notes, to search using specific criteria, to assemble sub-sets of data that had common elements, even a mechanism to share knowledge for the benefit of other users – things not possible in a printed catalog.

The expected advantages of a computer-based 'catalog' are evident: the dynamic nature of data that can be expanded without limitations imposed by the printed page, its ability to be edited, corrected, expanded and for new discoveries to be added. Unlike a printed catalog, there is no specific 'edition' to the database; it is edited continually and grows as our knowledge of the subject grows.

But the ability to actually interact with the data presents this database as being more than simply a digital catalog. Yes, of course, you can quickly search and extract data from across the entire database, but you can also sort, select and create sub-catalogs of data, create an inventory or want list, for example, and add your own comments such as cost information, varieties, condition, source, etc.

Printed catalogs remain an important complement to the digital database – familiar, portable, and tangible – yet they are increasingly expensive, not readily available to a wider audience, particularly to newcomers, and become quickly out of date as new discoveries are made. The growth of the hobby depends on wider access, not library stacks or personal book collections. As archives of history and as products of specific research on well defined subjects, yes, books remain a fundamental resource. But for wider audiences, the future depends on ease of access to information. Google... Wikipedia ... just two examples of the changing paradigm.

The present project relates to Dated Events (DEPS) – stamps promoting or commemorating public gatherings, expositions, fairs, conventions, anniversaries, celebrations, competitions, performances, etc.

The system is designed to be applicable to any other component of our hobby. Record design may vary as we expand into Advertising stamps, Political and Propaganda, Charities, and Cinderellas of any kind. The concept and methodology remain, even as improvements are made. Speed, ease of use, appearance and style – all these will change – but the fundamentals are largely in place.

To get started, here's a review of what you will see in the new database.

Access to the DEPS database is through the web site: www.posterstampist.com

This web site is like the 'foreword' to a catalog in some respects. Here the subject is discussed, the credits given, the terms defined, the process explained. More than that, there is a growing collection of basic resources such as illustrations of foreign alphabets and scripts, images of 'unknown' or unclassified stamps, current event topics, etc. at the web site.

There are links to other related web sites, organizations, certain sources of supply and to supporting dealers. And there is a link to the DEPS database itself.

Database access is available without charge. A 'log in' procedure is required (read about it on the web site) and should be reasonably easy to follow. The full set of interactive features requires that a user become 'Registered'. Again, there is no fee, but the registration is required to assure privacy of a user's interactive data. All these things are explained at the web site or become self evident.

The Poster Stamp List - Dated Event Database

From 1911 To Year Location BERLIN Country

Category Artist
Sub- Elements
Subject KeyType
Keyword
Design

Clear Fields Search

Sort

Year	Location	Type	Country
------	----------	------	---------

Log Off Become a Registered User

Once a 'first time user' or curious visitor has logged in, the first screen seen is a basic Search page, Figure 1 (at left), which allows a user to select from among several criteria for the records he wants to see.

There are no arbitrary 'catalog numbers' in this database. The basic description of any stamp is the combination of a 'year' and 'location' (city or region), with the third choice, not always required, of a 'type'. The type appears when more than one event occurs for any given year-and-location or when there are multiple stamp designs for the event.

So, at the basic Search page, one choice would be to find one specific stamp, for example, by typing '1911' in 'year from' and 'Berlin' in the 'location'. Entering these terms and selecting 'Search' brings up a List

View, Figure 2, of all the stamps that meet both the criteria of '1911' and 'Berlin'. It turns out that there were several events ('types'), in this case 12 records were found, and the results are all listed with a small thumbnail image and some descriptive comments in a scrollable list. Figure 2 (next page, top) shows a more detailed Search screen as it is seen by Registered users.








One can select 'View Details' of any stamp in the list, one at a time, and see the basic stamp record, Figure 3 (below, left). Again, this is in the version of the page seen by Registered users.

Welcome test2,
The Poster Stamp List - Dated Event

Search For Stamps My Saved Searches My Stamp Sets My Profile

From 1911 // To Year 1911 // Location BERLIN // Country ALL //
 Category ALL // Artist ALL // Elements ALL //
 Sub-ALL // Subject ALL // Keyword ALL // Design ALL //
 Clear Fields Search
 Save Search For Later Retrieval

Sort Year, Location, Type Sort 12 stamps found.

Year	Location	Type	Country	
1911	BERLIN	A	DE	 Expo. of (store displays) - monkey dressed as a drummer View Details
1911	BERLIN	B	DE	 3rd Expo for Office (Büro) products View Details
1911	BERLIN	C1a	DE	 Int'l Expo for foreign travel & trade View Details
1911	BERLIN	C1b	DE	 Int'l Expo for foreign travel & trade View Details
1911	BERLIN	D	DE	 1st Congress of IDO w/ 6 point star, eagle View Details
1911	at BERLIN	E1,2	DE	 1st Congress of maritime society HANSA Two variations are shown View Details
1911	BERLIN	F	DE	 Exhibition of confections, candy, etc. View Details

Log Off

Of course, one could have selected a broader Search by selecting a single year or a range of years, as provided. Another search criterion is 'Country'. Selecting it alone would bring up a list of 'found stamps' for every year and location in that country. Quite a long list in some cases. And there are certain 'keywords' that can be searched, which appear on the basic Search page, and allow topical and subject-area searches to be made, alone or in combination.

Sorting of the list view is also provided. But for Registered users, even more is in store. You will note that the basic search screen (Figure 1) provides at the bottom a button to 'Become a Registered user', which only appears on the screen of first-time or casual users. It can be selected at any time and presents a self-explanatory path.


Thereafter, a user has full personal access to the features that follow.

The Poster Stamp List - Dated Event Database

Year 1911 Location BERLIN Type C1b Country DE

Descr Int'l Expo for foreign travel & trade

Image Image2 Image3 MoreData



Size 41 x 31 Image info rdw KeyType

Text
 Internationale Ausstellung für Reise u Fremdenverkehr

Notes
 Note previous entry for type C1 - earlier dates 18 March - 15 May
 This design was greatly acclaimed and appears in various printed forms, varied by size, sometimes black and white cut-outs, distinguished from stamp varieties by such evidence as printed text on back, etc.

User Notes:

Category exhibitions & fairs, general
Subcategory 'international' or 'universal'
Subject tourist promotion
Keywords smoking - cigarette, cigar, etc
Design
Elements
Artist H. R. Erdt
Printer
Print type
Separation perforated & imperf
Format horizontal
Paper
Varieties Type C1 - earlier date
CatalogRef C&R pg. 329
 STW 11009-2
CrossRef
Colors multicolor - mostly yellow over gray-brown
Date 1 April - 20 June
Language German
Valuation C - midrange 5-10
 some premium for imperf.,

Previous 4 of 12 Next Add To One Of My Sets Back To List

One such feature is the ability to 'Name' a search; that is, having liked the results from, say, 1910 to 1913 Italy, one can 'name' it and return to that search with a single click. Why bother? Well, for one thing, each later time the search is requested, the records that are found include all newly added records and the latest versions of any record that has been edited. Nothing is ever out of date.

Another important feature is the ability to create and name a 'Set', which is a user-defined selection of all stamps that meet his or her wishes: the Aviation stamps of France, everything with pictures of chickens, or all stamps showing the Star of David - anything

for which specific 'keywords' are assigned. When searching, pre-determined lists of every choice for which keywords exist will 'pop up' to allow easy and accurate selection.


To apply these feature, a user elects to designate any stamp as a 'My Stamp'. One click selects it and brings up the 'My Stamp' basic record, Figure 4. This is the basic record of the stamp, as in Figure 3, but the layout

The Poster Stamp List - Dated Event Database

My Stamp for test2

Year 1911 at Location BERLIN
 Descr 1st Congress of maritime society HANSA
 Two variations are shown

Image Image2 Image3 MoreData



Size 28 x 45 Image info rdw KeyType

Stamp Notes My Sets This Stamp Belongs To

Text

Notes
 C&R notes the two types illustrated here - the second type with artwork & no text at bottom and without the date "12 Juni". They can be designated types E1a (with date) and E1b without. But there is no year date on either stamp and they appear in the 1911 category only

Category
 Subcategory
 Subject maritime
 Keywords sailboat, yacht
 Design
 Elements
 Artist
 Printer
 Print type
 Separation perforated
 Format vertical
 Paper
 Varieties see Notes
 CatalogRef C&R pg. 329
 STW 11011 & 12
 CrossRef
 Colors multicolor

Date 12 June
 Language German
 Valuation C - midrange 5-10

My Note Regarding This Stamp
 I have type E1a in a darker shade

Previous 1 of 1 Next Send Note To Editor Back To Main Screen Back To Set

the layout incorporates spaces for notes, for naming sets, for reviewing contents of sets, for communicating errors or additions to the Editor, etc. These added data are available only to the individual Registered user privately, and to no other users.

In this brief overview, much of 'how' these features are used will require a bit of discovery. Much can be learned in the 'Database Info' section of the web site, www.posterstamplist.com. The rest requires a visit to the database itself (access from the web site), registration, and exploration. Access to a reasonably 'modern' computer is required ... yours or your grandson's! (Specifications at the web site).

The PSCC has endorsed this project and is promoting its exposure to a wider audience. It remains a 'work in progress', with much data still missing or incompletely edited. Expansion beyond 1914 into the 1920s and 1930s will begin in 2010. But individual contributions of missing or incorrect data for all the earlier years are solicited as well and at any time. This is a mutually beneficial resource to which all students and collectors can contribute... an 'equal opportunity' resource!

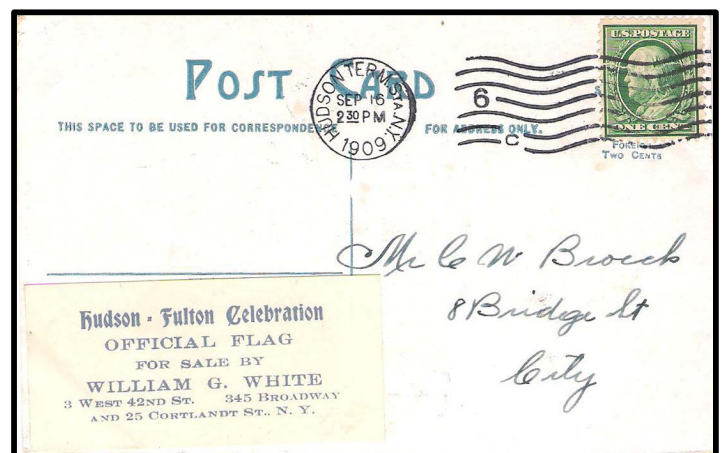
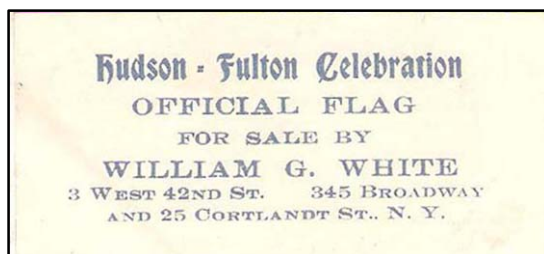
Dick Warren, Editor

Co-Editors: for the 19th Century: Art Groten; for the 1920's: Tom Minor

Are there special categories, countries or time periods for which you are especially interested in contributing? If so, please contact the Editor at: dickw3@gmail.com.

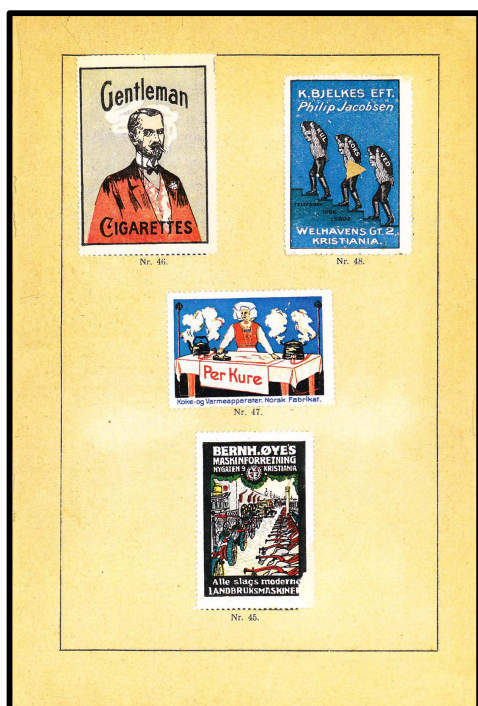
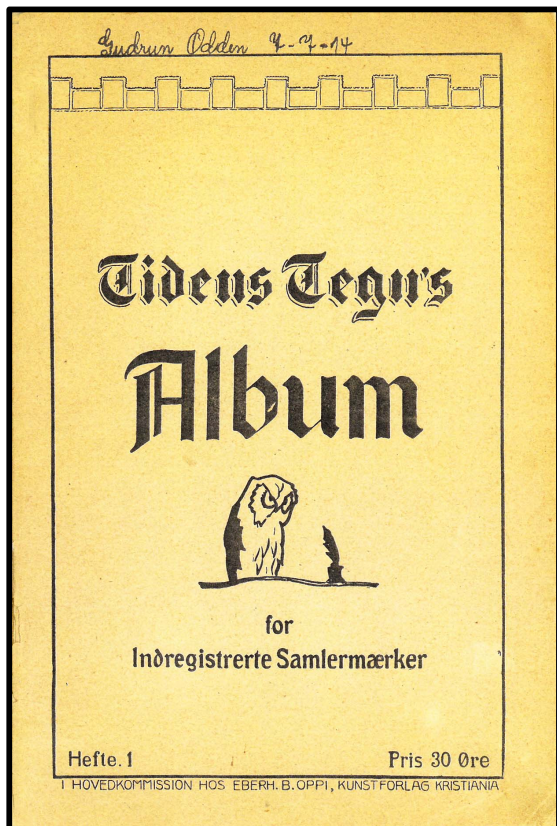
Provision is made in the database for Registered users to communicate with the Editors to correct errors or omissions on any specific stamp record. In several cases the image is missing or of inferior quality. New record information and new or corrected images are requested by email to the address above. Comments and questions as well.

To the right is a newly-discovered poster stamp for the 1909 Hudson-Fulton Celebration (see Vol. II, #1, p. 8).



1914 Norwegian Album...Charles Kiddle

This album shown below was issued by a newspaper *Tidens Tegn* in Kristiania, Norway in 1914. It was Volume 1 of a presumed series and cost 30 ore. The handwritten ownership of Gudrun Odden confirms the date. There are spaces for 48 poster stamps, most of which are Norwegian with a few German designs with variant Norwegian text. Two are Kurt Bottcher designs There is a blank page to which miscellaneous stamps have been added. Two copies are known. I understand that two other newspaper albums existed but only photocopies are known.



Available Summer 2009

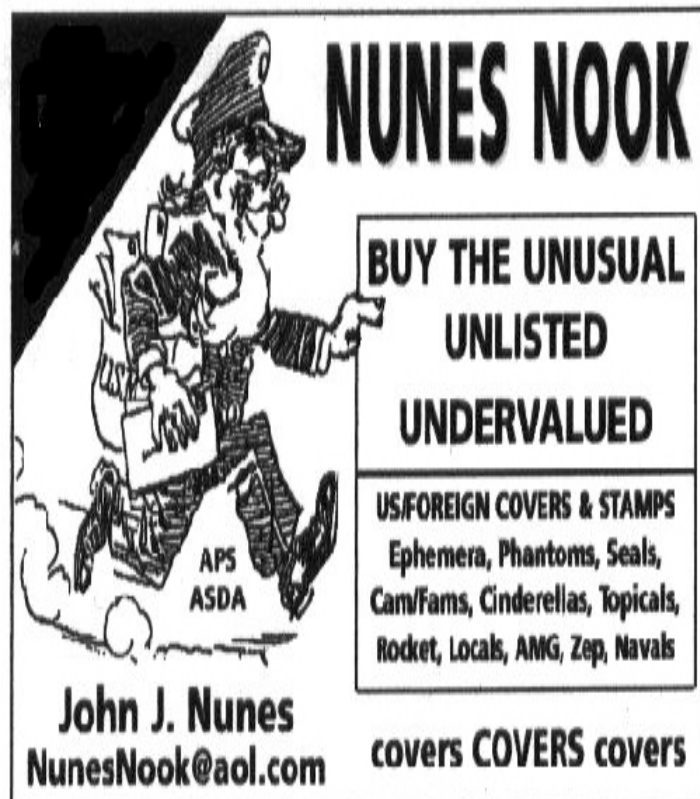
The newly designed
DATED EVENT POSTER STAMP
on-line interactive database

- illustrated in-depth listing of worldwide stamps
- 19th Century to 1919, eventually to 1940's or beyond; descriptions in English
- can be sorted and searched by year, place, country, category, keyword, designer & many other criteria & saved for future reference
- registered users can make notes, inventory, want lists - a personal specialized catalog!
- registration is free

for further information and background info go to the web: www.posterstampist.com

*Edited by Richard D. Warren (Dick)
Contributions by many*

Please note that data entry is a work in progress and that accuracy and completeness depends on comments & contributions by Viewers Like You . . .



NUNES NOOK

**BUY THE UNUSUAL
UNLISTED
UNDERVALUED**

US/FOREIGN COVERS & STAMPS
Ephemera, Phantoms, Seals,
Cam/Fams, Cinderellas, Topicals,
Rocket, Locals, AMG, Zep, Navals

John J. Nunes
NunesNook@aol.com

covers **COVERS** covers

APS
ASDA

Club Special: the following 15 books for \$990 postpaid (normally \$1,123).

Artists

The "Top Twenty" Artists Vols. 1 & 2 (189 pp. \$145)
Hohlwein, with update (64 pp, \$60)
Bottcher, 1912-14 & Ships, 2 vols. (108 pp., \$86)

Transportation

German Aviation/Aircraft (254 pp. \$125)
Cars: German (115 pp. \$75)
Cars: Worldwide without Germany, 2 vols. (136 pp, \$130)
Bicycles (77 pp., \$45)
Trains (38 pp., \$45)

Other

Photography (159 pp., \$90)
Letters Making Words & Calendars, etc., 2 vols. (375 pp, \$232)
Paris 1900 Wold Expositionj (145 pp., \$90)

Also available: 5 Volume Delandre WWI Catalogue, 675 pp., \$245 p.p.

Books may be ordered individually in which case please add \$3 for mailing of the first volume and \$1.25 for each addition volume.

All books are currently in the U.S.. Supplies are limited. If books are out of stock in the U.S., your order will be filled asap from the U.K.

For further information or to place an order, contact Publications Manager, Don Bodow, PO Box 270458, San Diego, CA 92198 or by email: dbodow1@san.rr.com

This space is available for an ad from our members, dealers or otherwise.

In the absence of a 1/4 page ad, free member classified ads of up to 30 words, excluding address, will be posted in this space. One ad per member per issue as space permits; first come, first served. Ads must relate to poster stamps. Buy, sell, trade or information sought are all OK.

They must be received at least 30 days prior to the next issue, i.e. by March 10, 2010.

The Missouri–Texas–Kansas Railroad...Charles Kiddle

In 2003, I published *The World's Fair St. Louis 1904* (The Louisiana Purchase Centennial Exposition and site of the 1904 Olympic Games) both as a record of the poster stamps and to mark the 100 years since the Fair was held.

In the catalogue, on p. 68, is Cat. No. 7.3 (at right). The text reads “Katy” “The World’s Fair” and “ST LOUIS 1904” which had been listed in Cazin & Rochas in 1914. Who was “Katy?” The assumption has always been that this stamp was a ‘one-off’ for the Fair.

Robert C. Bradbury found a group of poster stamps in a c.1904 collection of poster stamps in a contemporary album. They are the subject of this article and addendum to my catalogue.

“Katy” refers to the Missouri–Kansas–Texas Railroad which was incorporated on May 23, 1870. In its earliest days it was referred to as “the K–T,” which was its stock exchange symbol. That designation evolved into “the Katy.”

The Katy was the first railroad to enter Texas from the north. Eventually, its core system would grow to link Kansas City and St. Louis MO, Tulsa and Oklahoma City OK, Fort Worth, Dallas, Waco, Temple, Austin, San Antonio, Houston and Galveston TX.

There are two known series and, possibly, a third if the one in my catalogue was part of another series. Most likely, for 1904, the wording of the ‘first’ design of the ‘standard’ series was modified specifically for the Fair. 17 different designs are known; 17 is an unlikely number for a series and presumably others remain to be found.

The details of the known stamps are given in the chart below as are illustrations of those seen to date. The Bradbury numbering system has been used.

There are two main differences. Type A has a solid black star at the middle and bottom of each stamp. Type B has a black circle enclosing the star in the same locations. It is assumed that the same designs were used for both Type A and Type B series.

One unresolved question is why Type B1 indicates “Will Mail a set (12) for Two Cents in stamps” where there are, clearly at least 17 designs. It could be that either those with “On the line of...” at the bottom or those with differing texts each formed a ‘set.’ If so, ignoring A1 and B1, there would have to be 11 designs. 10 are known for Type A and 8 for Type B.

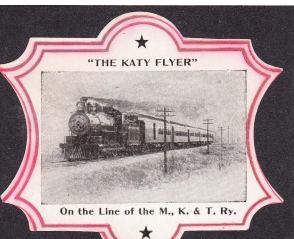
The known stamps are show on the next pages.



Type A seen	Type B seen	Text at top of design	Text at bottom of design
A1		GET “KATY” STICKERS	Or will Mail for two Cents in Stamps
	B1	GET “KATY” STICKERS	Will Mail a set (12) for Two Cents in Stamps
A2	B2	“THE KATY FLYER”	On the line of the M., K, & T. Ry.
A3	B3	IN HIS GLORY, in Texas	On the line of the M., K, & T. Ry.
A4	B4	TEXAS COTTON FIELD.	On the line of the M., K, & T. Ry.
A5	B5	SHEEP RANCH, Greenville, Tex	On the line of the M., K, & T. Ry.
A6	pp	SATURDAY EVENING, Taylor, Tex.	On the line of the M., K, & T. Ry.
A7	B6	“KATY” STATION, Parsons, Kas	On the line of the M., K, & T. Ry.
A8	B7	THRESHING WHEAT, Parsons, Kas	On the line of the M., K, & T. Ry.
A11 *	B8	OLD NEGRO CABIN, TEXAS	On the line of the M., K, & T. Ry.
A9		PICKING PEACHES IN TEXAS.	On the line of the M., K, & T. Ry.
A12	B9	SAN MARCOS RIVER, San Marcos, Tex.	On the line of the M., K, & T. Ry.
	B10	WHEAT FIELD ON “THE KATY”	Realization.
	B11	EAST TEXAS-M., K. & T. Ry	Picking Peaches.
	B12	INDIAN TERRITORY - ON “THE KATY”	Straight-away.
A10	B13	The Alamo, San Antonio, Tex., where Davy Crockett Fell	Reached by the M., K, & T. Ry.
	B14	ON “THE KATY” TEXAS TENDERLOINS.	These Little Pigs Go to Market.
	B15	ON “THE KATY”	Apple Orchard, North Texas
	B16	ON “THE KATY”	Peanuts
	B17	ON “THE KATY”	Cabbages are Profitably Grown.

Notes :

1. as can be seen, the text of both ‘A1’ and ‘B1’ do not conform to the standard design approach of all other designs;
2. * = only a photocopy is available;
3. ‘pp’ = probably exist(ed).



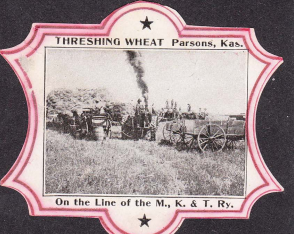
A1 A2 B4 B5



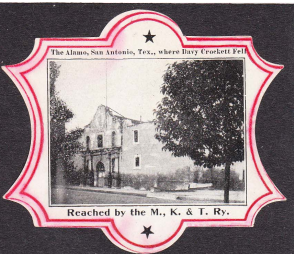
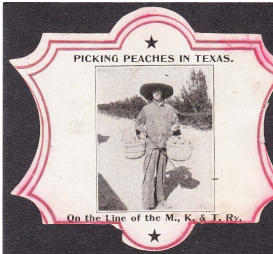
A3 A4 B6 B7



A5 A6 B8 B9



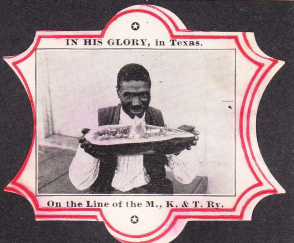
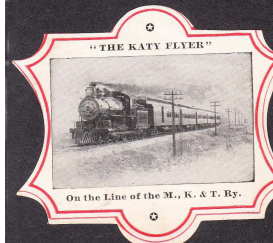
A7 A8 B10 B11



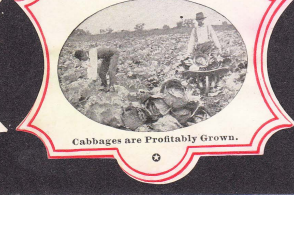
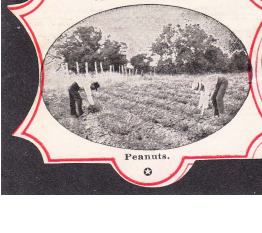
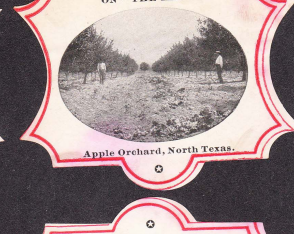
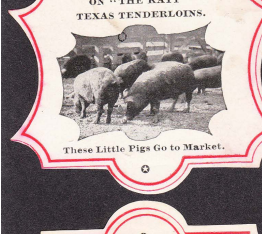
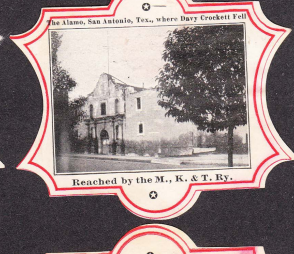
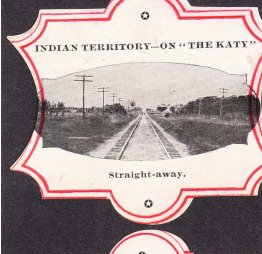
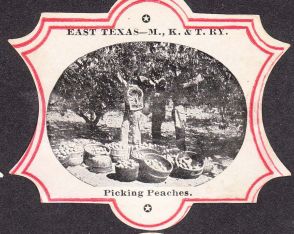
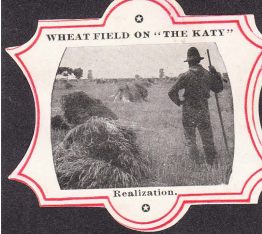
A9 A10 B12 B13



A12 B1



B2 B3



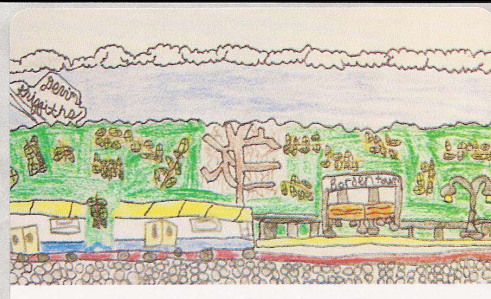
B14 B15

B16 B17

Gene Fricks offers these recent issues by the NJ Transit Authority as evidence that the utility of poster stamps has not been forgotten.



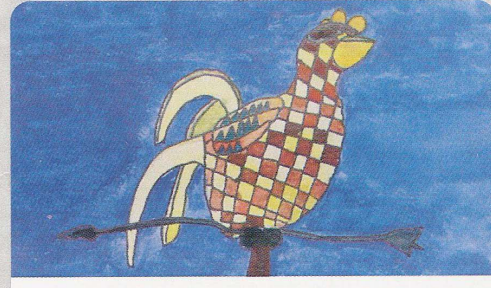
Light rail cars move quietly so always look both ways before crossing the tracks.



Never climb on top of or in between rail cars.



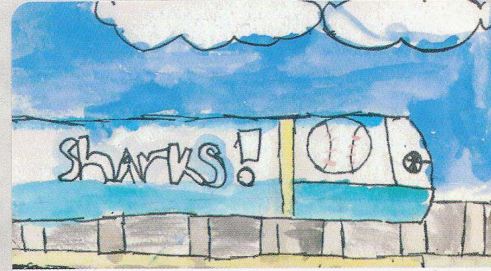
Never throw rocks or bottles at the train. Someone could get hurt.



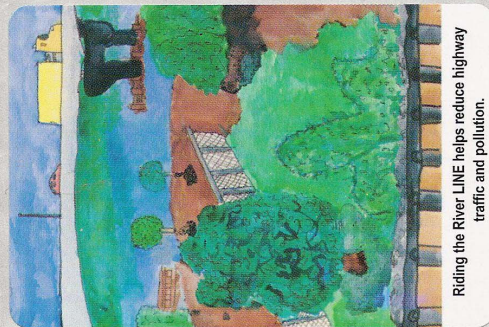
Always stay alert near light rail tracks and be safe.



Always stand behind the safety line when waiting on the station platform.



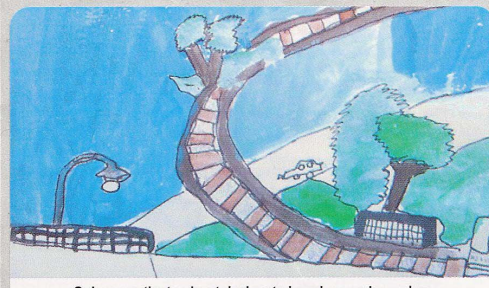
Ride the River LINE to a Camden Riversharks game and to other entertainment activities.



Riding the River LINE helps reduce highway traffic and pollution.



Rail tracks are private property. Trespassing on the railroad right-of-way is dangerous and illegal.



Only cross the tracks at designated grade crossings where there are crossing gates or traffic lights.



Use caution when wearing headsets or using cell phones near the tracks or on the station platform.

Progressive color proofs of poster stamps are quite rare. Bonnie Singer sent this one. Does anyone have others?

