

The Golden Potlatch of Seattle

by Arthur H. Groten M.D.

Named for the gift-giving festival of the Pacific Northwest Coast tribes, the Seattle Potlatch events were held from 1911-1914 and 1934-1941. The “golden” reference celebrates the 1897 arrival in Seattle of the first gold-bearing ship, the Portland, from the Klondike River mines. The festival was an attempt to keep up the promotional momentum that followed the Alaska-Yukon-Pacific Exposition of 1909. The events included naval displays, aviation meets and auto races as well as parades, concerts and exhibits, all designed to show how forward-thinking Seattle was.

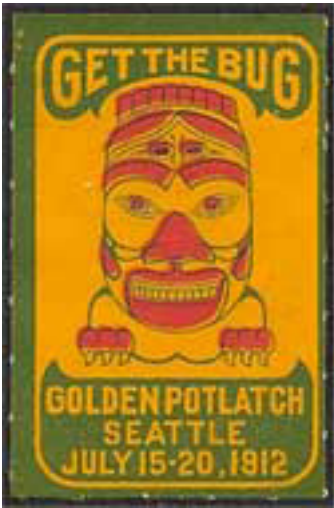
The following images show some of the poster stamps and ephemera related to these events, the first of which occurred in 1911.



Above, the purple handstamp seems to be from 1911 although the dates don't match precisely. But that image appeared only in 1911. Below, a 1911 "97" postcard for "Seattle's First Annual Carnival."



1912 was the first appearance of the Haida iconography. The black one seems to be a contemporary proof of some kind. The use on postcard is dated Seattle Feb. 23, 1912.



Businesses often had the Potlatch symbol imprinted on their stationery. Of interest is the very early use of the 1915 P.P.I.E. machine cancel, first used on May 7, 1912.



To the right is a large gummed label. It also may be found as a window decal. The date is unclear but it is from the 1930s.

Below are the 1934 and 1935 stams and the 1934 used on a contemporary postcard.



Heather Meadows, a beautiful alpine park carpeted with heather and dotted with mirror-like lakes surrounded by clusters of evergreen trees. There is no beauty spot in all America that surpasses it.

127363

PUB. BY ADAMS NEWS CO., SEATTLE, WASHINGTON.



POST CARD



THIS SPACE FOR ADDRESS ONLY

Dear Cousin + Family
Greetings + best
wishes + love
Mrs. R. Trindall

QUALITY VIEWS

Mr. C. N. Smith,
Wattsburg,
Pa.

