

# The Journal of the Poster Stamp Collectors Club



Fall 2011  
Vol. VI No. 2  
Whole # 22

## Rare Original Artwork

Charles Kiddle has send some original watercolor artwork by Borglund for poster stamps he created for Andreasen & Lachmann around 1914.



APS #255.

## Table of Contents

President's Message	p. 1	Pals Poster Stamps of Australia	<i>Art Groten</i>	p. 6
A Word from Walter: World War I	p. 2	Plagiarisms X		p. 8
Miscellany	p. 3	Exposition Poster Stamps on Cover	<i>Art Groten</i>	p. 11
Lindbergh Etiquettes	<i>John H. Bloor</i>	p. 5 Our first Auction		p. 13



PSCC Auction #1

A Word from Walter  
page 2



- |       |    |    |
|-------|----|----|
| Lot 1 | 2  | 3  |
| 4     | 5  | 7  |
| 8     | 9  | 10 |
|       | 11 |    |
| 12    | 13 | 15 |
|       |    | 16 |



## **PSCC Officers & Directors Listing**

Art Groten – President & Journal Editor – PO Box 30, Fishkill, NY 12524

(artgroten@optonline.net)

Nick Follansbee – Vice-President – P.O. Box 3210, Ashland, OR 97520

(nfollansbee@uci.net)

Richard Warren – Secretary/Treasurer – PO Box 208, Ark, VA 23003

(dickw3@gmail.com)

Chip Blumberg – Board of Directors/Awards – PO Box 1144, Bala Cynwyd, PA 19004

(thefoldedletter@verizon.net)

Charles Kiddle – Board of Directors – PO Box 13, Alton, Hants, UK GU34 4DW

(charleskiddle@btconnect.com)

Tom Minor – Board of Directors – 7374 Arlington Dr., St. Louis, MO 63117-2242

(mr.science@sbcglobal.net)

Honorary Vice-Presidents: Esbjorn Janson, Francis Kiddle, Walter Schmidt

International Representatives: Karoly Balazs (Hungary), Eduardo Escalada-Goicoechea (Spain), Dr. Richard Grosse (France), Mrs. S. Petersson (Denmark), Jacob A. van Dijk (Netherlands)

## **President's Corner...Art Groten**

### **Our next PSCC Meeting**

We will be meeting at Pipex in Portland, OR, May 11-13, 2012. I encourage members to plan on attending and to prepare an exhibit. We have been allotted only 15 frames at this time but if I can get commitments for more I think they'll give them to us. Information about Pipex may be found on the APS web site.

Dick Warren is undertaking a complete overhaul of our web site. Stay tuned.

### **Publications Manager Needed**

Don Bodow, who has been quite ill, is recovering albeit slowly. He has been unable to act as Publications Manager and, therefore, we urgently require someone to step forward to do this important work. **PLEASE** contact me.

### **PSCC Auction**

Our first PSCC auction appears in this issue. By the time you receive this Dick Warren expects to have it on our website in full color. Rules and regulations are on page 13. Not all items are illustrated in the Journal due to space limitations but they can all be seen on the website.

## **Secretary/Treasurer's Report...Dick Warren**

Some members are still tardy in paying their dues. Please do so right away to keep receiving your Journal.

### **New members:**

#153: Sheldon Shapiro, 2417 South 20th St., Philadelphia PA 19145-4202

#154: James L. Bikoff, Georgetown Place #120, 1101 30th St. NW, Washington DC 20007 jlbikoff@sbbdc.com

#155: Dr. Hubert Gangl, Porzellangasse 14-16/17, Vienna A1090 Austria. Collects Vienna. hubert@drgangl.at

### **Other changes:**

Corrected new web site: #091 Steve Zirinsky: [www.zirinskystamps.com](http://www.zirinskystamps.com)

Deceased: #064 Richard Sitron

### **From the Editor:**

See the ad at lower left on page 10 for Charles Kiddle's latest catalogues!

This issue is 16 pages to accommodate the Auction. I hope the income generated from sales will offset the additional cost. Time will tell.

Vol. 5 of Stewart Gardiner's *Catalogue of Exhibition and Event Poster Stamps* is available from me. The price is \$44 postpaid in the U.S., 3-hole punched or not (advise which you want). Overseas members please contact Stewart directly at [stewart.gardiner@ntlworld.com](mailto:stewart.gardiner@ntlworld.com)



## A Word from Walter...Walter Schmidt

While some may disagree, I contend that interest in collecting classic poster stamps dramatically declined after 1918. The variety of military and propaganda material printed during the Great War, however, was enormous and astounding. Any attempt to collect all of this material, I thought, would be beyond the scope of reason. Still, a few brave souls such as Michel Bonneau and Alan Jackson ignored the immensity of the task in spite of my warning. Of course, they then proceeded to prove me wrong. Michel published *Les Vignettes Patriotiques Françaises de 14-18* and Alan wrote *For God, Kaiser and Fatherland*, two comprehensive WWI works. [Ed. As usual, Walter is too shy. He worked, initially alone, later with Charles Kiddle, to produce the monumental 5 volume series on the Delandre issues.]

Now I am convinced that collecting WWI issues printed in the United States would not only be a manageable task, but would make a fine catalogue as well. Take a peak at a few examples I have found so far in this area. Should anyone wish to become obscurely immortal by publishing a catalogue of U.S. WWI issues, I await your contribution to our hobby with wild anticipation.



**Query:** Bill Sammis asks if anyone knows anything about this Flax Post stamp inscribed "East & West/Direct Mail".



**Auction result:** Charles Kiddle reports that this, the rarest of German aviation poster stamps, realized 480 euros in a recent European auction.



**Dresden 1896:** Peter-Hannes Lehmann sent this 2"x3" item, printed on card stock. It was never made into a poster stamp as far as we know but is well-known as a poster.



**Balloon advertising label:** A very early balloon advertising label used from Cairo in 1893, written in Yiddish, for a purveyor of gold, silver and other collectibles. Why the balloon was used as the image is unclear.





## More About the Lindbergh Airmail Etiquette and a Related Ryukyu Etiquette...John H. Bloor

One sometimes sees a philatelic subject that has been discussed at length in one journal appearing as a mystery in another journal. Such is the case with the airmail etiquette shown at the top of page 11 of the Summer 2011 issue of this Journal. The information here will serve to educate another group of collectors.

The story of this Lindbergh airmail (Scott US C10) look-alike is told in great detail in the April 1972 issue of *From The Dragon's Den*, the Journal of the Ryukyu Philatelic Specialist Society. I was led to this article about ten years ago by items in the *Jack Knight Air Log* (Oct-Dec 2001, p. 57) and the *Air Post Journal* (Feb 1972, p. 164; July 1972 p. 328). Another closely related etiquette was prepared for the International Ryukyu Stamp and Coin Society (IRSCS). Both were designed by Garrett Satfield in 1965 and 1966. I find it impressive that all of this was done before the days of personal computers and Adobe Photoshop.

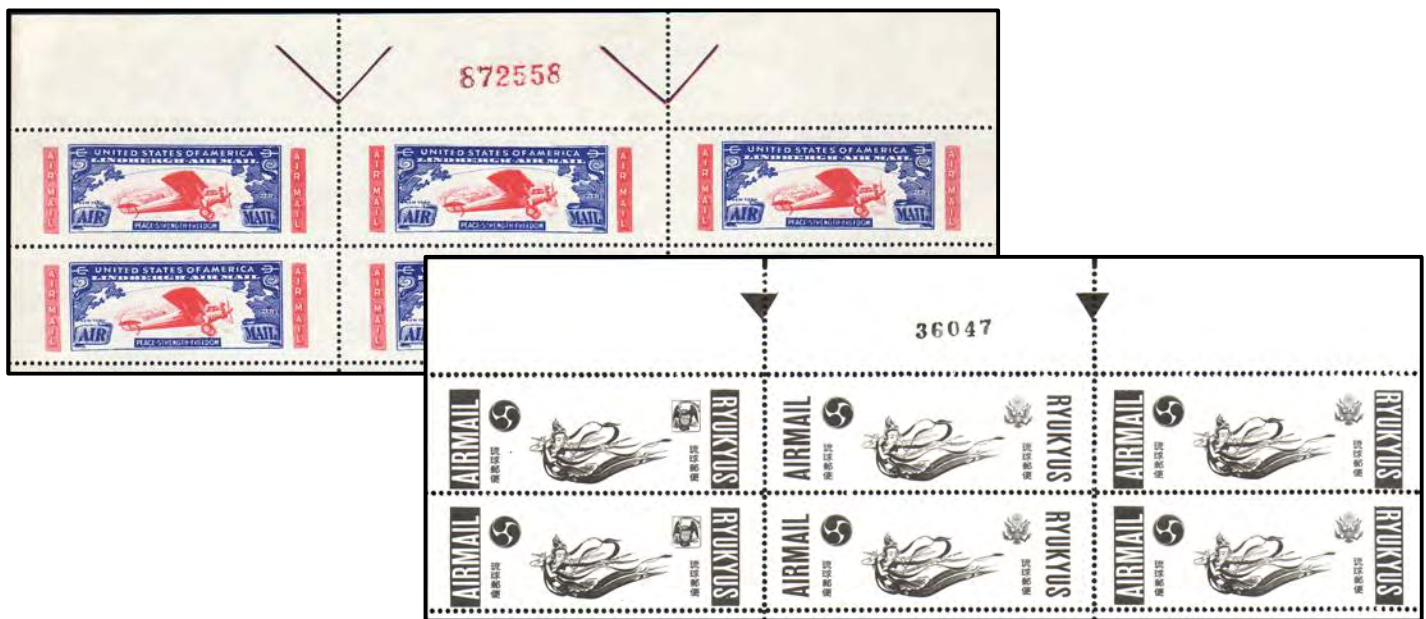
The top block of 6 is shown in Figure 1. In the full sheet of 30, the five labels at the lower left corner of the pane are in reversed colors compared to the rest of the pane with the airplane and the vertical tablets in blue and the frame in red. The article in *From The Dragon's Den* has a diagram showing the sources of the design elements for the etiquette. The airplane is clearly based on the Lindbergh airmail stamp. Other parts of the design come from Scott US C11, C25, CE1, and 1998; and Scott Canada 242. Satfield says that all of the elements used have been modified from their appearance on the original stamps.

In 1967 the US Treasury Department ruled that the label was prohibited because of its similarity to C10. Satfield destroyed the majority of the 468 sheets that he had printed along with the negatives, printing plates, proofs, and samples. He estimates that fewer than 50 sheets of the labels still exist.

Also shown here is top block of 6 [of 30] of the Ryukyu etiquette. Satfield says that he was asked by Jim Wong of the IRSCS to design an etiquette "...that had a United States-Ryukyu theme with an emphasis on the latter." To accomplish this he used "... the Mitsudome Crest of the First and Second Sho Dynasties, the Great Seal of the United States (two types), ...the Heavenly Maiden of the Ryukyus [from Scott Ryukyus C9-C13] ..., and appropriate English and kanji text." One of the US seal types is seen on the 10 labels in the left column of the sheet. The other US seal design was used on the remaining 20 etiquettes in the sheet.

Five hundred sheets of the white, perforated labels were printed. They were delivered to Jim Wong who was reported to be very pleased with them. Nothing more is known about where the labels ended up. The block [from a sheet] shown here, purchased on eBay, shows that some reached the philatelic market.

There is a great deal more information about the production and history of these labels in the article in *From The Dragon's Den*. I will send copies of the four articles cited here to interested readers for an SASE (postage for 3 ozs) and \$1.00 for copying or they can obtain them by mail from the Rocky Mountain Philatelic Library in Denver or the American Philatelic Research Library in Pennsylvania (see the websites of these libraries for details).



## Addendum to Charles Kiddle's Bicycle Catalogue...

### POSTER STAMPS : BICYCLES : CARS : MOTORCYCLES : WORLD : 2011

As is inevitable, as soon as a catalogue is published immediately new poster stamps are found. There were 9 years between the 2003 and 2011 catalogues but two weeks after publication these three poster stamps were found. Usually, it is not important to issue an 'Addenda' but, here, two of the Italian poster stamps are spectacular and should be available to those who have bought the 2011 catalogues. Interestingly, two of the three are for cars, bicycles and motorcycles. (Happily) more will be found in the months and years to come. Two indicated Catalogue Numbers are indicated for the three poster stamps – first the 'CARS' Catalogue Number, then the 'BICYCLES' Number.



CARS

Italy

Italy

France

Cat. No.	Rarity	Cat. No.	Rarity	Cat. No.	Rarity
I.113I	200	I.114	60	F.C.153	60

BICYCLES ( MOTORCYCLES)

Cat. No.	Rarity	Cat. No.	Rarity	Cat. No.	Rarity
I.93I	200	I.94	60	F.65	60

Note : the second and third poster stamps were designed by 'MICH' (Michael Liedaux).



## The Pals Labels of Australia...

Among the scarcest of the Australian poster stamps are those produced by Pals Magazine, published by the Herald and Weekly Times of Melbourne. Below is the only listing of them I am aware of, from Bill Hornadge's *Catalogue of Australian Cinderellas*, long out of print. On this page, I show three from the War series. The USS Seattle is unlisted. The Goble is known in three colors, brown, red and blue. This company also produced the famous, and rare, aviation labels for special 1920 and 1922 flights, shown below. On the next page are the Australian Views and Animal sets.



### "PALS" LABELS

In the early 1920's the Herald and Weekly Times Ltd., Melbourne, produced a number of souvenir labels to promote a children's magazine "Pals". So far as I have been able to ascertain, these were purely publicity labels and had no postal association whatever. However, because of their resemblance to postage stamps, they were often included in collections formed in the 1920's.

The commonest of these labels is a set of six which I will call TYPE A. These are very large in size (7cm x 5cm) and depict rural scenes in the six Australian states. The colours and subjects are: A Settler's Home — South Australia (green), Apple Harvest, Tasmania (Green), Coaching in Victoria (Red), Cutting sugar cane, Queensland (red), Mosman's Bay, Sydney (Blue) and Felling Timber, Western Australia (blue).

They were printed in miniature sheet format (2 rows of 3) and as three colours were used this involved three passes through the press for each sheet. They are perforated and have a superficial resemblance to stamps.

TYPE B is also a set of six, but in smaller size (5.6cm x 4.6cm). These feature Australian birds and animals as follows: Platypus (green), Emu (green), Kangaroo (red), Lyre Bird (Red), Kookaburra (blue) and Koala (blue). The word "PALS" appears in prominent type at the top of each label and the word "AUSTRALIA" in equally prominent type at foot of each label. These are much scarcer than the TYPE A series showing scenes.

TYPE C: I have a label somewhat similar to above (size 4.6cm x 5.6cm) depicting Wing Commander Goble and printed in Red. The design shows the Wing Commander with an island scene in background, a flying boat overhead and the word "PALS" at top left. I have heard of another label of similar type depicting Admiral R. E. Coontz, also printed in red. These probably were part of a series of six depicting American military heroes of World War I.

<b>TYPE A. Australian views.</b>	
Single labels unused.....	\$1
Sheet of six .....	\$12
<b>TYPE B. Birds &amp; Animals.</b>	
Single labels unused.....	\$2
<b>TYPE C. War Heroes</b>	
Single labels unused .....	\$3









## Plagiarisms X...

Both A.E. Dent & Co. of London and Morton, Phillips & Co. of Canada used the same image, changing the text including the telephone numbers on the ship.



While not a true plagiarism, it is quite interesting that the Danish Post Office honored a 1914 poster stamp on a 2000 postage stamp. This is the only example of such an honor that I am aware of.



A Delandre aviation stamp (Cat # 1658.1) was plagiarized for a Russian Bond Issue of 1917.



Delandre was not above plagiarizing his own productions. Here the design for the Bogota Red Cross label (Cat. # 6 in Vol. 3) was used again for a Russian (Fellin) issue (Cat # 655).





The design for the 1912 Austrian Olympic stamp was used the following year for a sports meet in Stuttgart and in 1914 for the Copenhagen Sports Club.



Hans Rudi Erdt created the striking stamp for Opel automobiles that was copied by Runos cigarettes.



Similarly, Julius Klinger's famous image for the 1913 Spring Aviation Meet at Johannisthal was used in the much busier design for Berbert's confections in Regensburg.



Available Summer 2009

The newly designed  
**DATED EVENT POSTER STAMP**  
on-line interactive database

- illustrated in-depth listing of worldwide stamps
- 19th Century to 1919, eventually to 1940's or beyond; descriptions in English
- can be sorted and searched by year, place, country, category, keyword, designer & many other criteria & saved for future reference
- registered users can make notes, inventory, want lists - a personal specialized catalog!
- registration is free

for further information and background info go to the web: [www.posterstampist.com](http://www.posterstampist.com)

*Edited by Richard D. Warren (Dick)  
Contributions by many*

Please note that data entry is a work in progress and that accuracy and completeness depends on comments & contributions by Viewers Like You . . .

## Wanted

### Articles for the Journal

If you are tired of articles written only by Art Groten, Charles Kiddle and a few other stalwarts, please send the Editor something, anything, to work with and he will do what editors do, make it ready for publication.

In the meanwhile, the Editor is looking for stamps in the following topics for eventual inclusion in the Journal: women's rights including suffrage; the union movement and non-U.S. Valentine stamps. He always wants to hear about plagiarisms, unusual philatelic varieties and new additions to our on-going exposition series.

### NEW BOOKS by Charles Kiddle

**Cars (World) 2011:** 104 pp. in color, poster stamps never before published. \$70

**Bicycles (World) 2011:** 85 pp. in color, poster stamps never before published. \$56

**Poster Stamps: Graphic Artists: The Best of the Rest**  
This is a series of 5 volumes as follows. Almost all in full color, published in 2011.

<b>1: One, two or three designs only</b>	86+ pp. \$56
<b>2: Artists A-G</b>	140+ pp. \$80
<b>3. Artists H-L</b>	140+ pp. \$80
<b>4. Artists M-R</b>	165+ pp. \$88
<b>5. Artists S-Z</b>	190+ pp. \$95

Books may be ordered individually in which case please add \$4 for mailing of the first volume and \$1.50 for each addition volume.

All books are currently in the U.S. or will be so soon. Supplies are limited. If books are out of stock in the U.S., your order will be filled asap from the U.K.

For further information or to place an order, contact Art Groten

This space is available for an ad from our members, dealers or otherwise.

#### Member classified ads

**Wanted:** Silent film related poster stamps, especially Wentz issues for The Black Box, series A Art Stamp Album for silent movie stars and Essanay Charlie Chaplin set. Will buy or trade. Ron Kreuger, Box 741, Oak Park, IL 60303 (708-)788-8235 or [krugeron@sbcglobal.net](mailto:krugeron@sbcglobal.net)

**Wanted:** Mr. Ice Cream desires ice cream and soda fountain poster stamps from around the world: ice cream, soda fountains, ice cream machines, people enjoying ice cream, etc. Contact Al Mellis: [mellisfamily@rcn.com](mailto:mellisfamily@rcn.com)

**Wanted:** Wisconsin poster stamps, event seals, advertising stamps, charity stamps, labels, artist's proofs on or off cover. Ken Grant, E1 1960 Kessler Rd. Baraboo, WI 53913 email: [kenneth.grant@uwc.edu](mailto:kenneth.grant@uwc.edu)

In the absence of a 1/4 page ad, free member classified ads of up to 30 words, excluding address, will be posted in this space. One ad per member per issue as space permits; first come, first served. Ads must relate to poster stamps. Buy, sell, trade or information sought are all OK. They must be received at least 30 days prior to the next issue, i.e. by March 10, 2011.



## Exposition Poster Stamps used at the Expositions...Art Groten

One of the pleasures of hunting for poster stamps on cover is to find one tied or in association with an appropriate exposition postmark. It is even harder to find them on the address side, except, of course, for those on postcards. I show 6 on the next two pages and invite members to send scans of theirs.

In order: 1902 Dresden Builders Show; 1905 Opening of the Simplon Pass; 1911 Dresden Hygiene Show; 1932 Marseilles Fair; 1936 Paris Fair; 1937 Budapest Industrial Show.









## PSCC Auction #1

All Bids must be received by Midnight, Wednesday, November 30, 2011, by mail to PSCC, P.O. Box 208, Ark, VA 23003 USA, or by email to: posterstampcc@gmail.com. The following rules will apply:

1. Bidding: All bids shall be made in U.S. dollars in conformity with the following increments: 50c up to \$15, \$1 from \$15 to \$50, \$5 over \$50. Lots will be sold at one increment over the next highest bid. Odd amounts will be reduced to the next lower increment. In case of tie bids, the earliest received will prevail. All bids must be received in written form, via mail or email. Bids are not accepted by telephone. Maximum bids will remain confidential. Actual prices realized will be published in the PSCC Journal at a later date.

2. Reserves: Owners have the right to bid on their own material. Bids below \$3 or under half of the estimate ('E') will not be accepted. Estimates are for general guidance, based on condition & market experience. Reserves in the form of a Minimum Bid ('MB') may be indicated at the discretion of the auction manager to provide specific guidance.

3. Fees: A 5% Buyer's Premium will be added to all purchases, to the benefit of the PSCC. Consignors are charged 10% of the bid price of lots sold. Shipping and handling: will be added to all purchases, with a minimum of \$1.50 domestic or \$3.00 overseas. Lots will be sent by regular postal mail at the buyer's risk. Registration or insurance may be requested at the time the bids are placed and will be added at actual cost.

4. Payment: is accepted in US dollar checks, US cash at Buyer's risk, or by PayPal to the PSCC account (same as email, noted above) at a 4% premium. Money Orders are not accepted. Invoices will be mailed or emailed at the auction manager's discretion within 5 days of the sale, barring unforeseen circumstances. Payment is expected within 5 days of receipt of the invoice. Lots will not be sent until payment in full has been received. No exceptions. Please provide your email address, if any, and/or phone number when bidding.

5. Returns: Lots may be returned within 10 days for refund only if not correctly described (see "Descriptions"). Send an email to the PSCC address prior to mailing any returns.

6. Descriptions: All stamps should be assumed to lack gum unless gum is specifically mentioned in the description. Paper faults (tears, thins, soiling) will be described either specifically or generally ("small faults," "unobtrusive tear," "back faults," "insignificant toning," etc.). Bidders should be guided by the illustrations provided, as stated below.

All lots for this Sale are illustrated in color on the Internet by choosing the Link at the PSCC web site: [www.posterstampcc.org](http://www.posterstampcc.org) and also at the alternate site: [www.posterstampist.com](http://www.posterstampist.com). Examples of some lots are shown in black & white on page 16 and in color on the inside front cover and the back cover (both sides).

LOTS - Dated events (refer to the CSC catalogue or online at the DEPS database\*\*)

1. 1877 Munich, 50th Conference German Naturalists & Doctors	E \$25
2. 1878 Berlin, International Paper Exhibition, Type A1a, rated R	E \$25
3. 1879/80 Worlds Fair (Sydney) type 1, commissioner's seal, rated R	MB \$25
4. 1895 Manila, Philippines Regional Exposition, Gold medal, elusive	E \$25
5. 1897 Aalborg, Handcraft & Industrial Exhibition	E \$15
6. 1897 Heilbronn, Art, Industry & Trades Exhibition, Type A4, Nagel	E \$10
7. 1897 Ulm, 50th Anniversary of Cementmaker E. Schwenk, rated RR	E \$40
8. 1898 Hague, National Exhibition of Women's Work, Type A3, classic Art Nouveau design by C. van der Hart, large, elusive	E \$30
9. 1898 Jerusalem, Int'l Scientific, Industrial Expo (event not held)	E \$25
10. 1899 Utrecht, Poster Exhibition, type A1, printer: Moesman	E \$25
11. 1899 Utrecht, as before, type A3, artist K. Hanas, small thin	E \$15
12. 1910 Caen, FR, Aviation Week, type A2, Naudet 42	E \$12
13. 1910 Falkoping, Sweden, Industrial & Agricultural Expos, rated R	E \$25
14. 1910 Baden Farm Society anniversary, embossed	\$7

- |   |        |
|---|--------|
| 15. 1913 Leipzig IBA, DEPS type C4.13, for Krefeld Tapestry Makers<br>-- see also 1914 Leipzig Bugra Expo, Lot #79 (set) -- | E \$12 |
| 16. 1913 Madrid, Death of M Poincaré, French mathematician, in 1912   | E \$12 |
| 17. 1918 Basel (Bâle) Sample Fair, in French, Pen 1802c   | \$9    |
| 18. undated (1918) Zurich Art Museum Expo. candelabra, Pen S.222, OG  | \$6    |
| 19. 1920 Hungary, Centenary of Janos Lavotta, design: Miklos Haz  | E \$12 |
| 20. 1922 Rostock Frohjahrens Woche, Spring Week, signed Balzer, OG  | E \$12 |
| 21. 1925 Basel, bakery show (stag & pretzel) Pen 2505   | \$5    |
| 22. 1926 Menaggio, Italy, 30 January Ball, Malorzo 26-110   | E \$15 |
| 23. 1927 Buenos Aires, Argentina, 3rd Congress of Architects  | E \$12 |
| 24. 1927 Berlin, sports week, (bear, symbol of Berlin)  | \$4    |
| 25. 1928 Bilbao, Spain National Exposition, OG  | \$8    |
| 26. 1929 Steinschonau, Austria, 7th International Vegetarian Congress   | \$5    |
| 27. 1932 Riga, Latvian Exposition   | E \$12 |
| 28. undated Milan, ca.1930, Permanent Exhib., design: Mauzan, elusive   | E \$35 |
| 29. undated Tivoli (Copenhagen), c.1930s, Electrical Show   | \$8    |

**DEPS - USA events**

- |   |        |
|---|--------|
| 30. undated Chicago, 37th University musical comedy event                 | \$8    |
| 31. undated All-Iowa Fair (c.1930s) noting horse & auto races             | \$6    |
| 32. 1915 Gloversville, NY, silver anniversary celebration, rated R        | E \$18 |
| 33. 1925 Sedalia, Missouri State Fair, Phenix Label Co., NH, rated 5      | \$4    |
| 34. 1926 Detroit 40th Annual Typothetae Convention, rated 8               | \$8    |
| 35. 1927 Albany, NY, Auto Show, interesting design, elusive, OG, rated 20 | E \$18 |
| 36. 1955 Middlebury, VT, College Winter Carnival, seldom seen, unlisted   | \$8    |

**Miscellaneous - Political, Promotional, etc.**

- |  |         |
|--|---------|
| 37. 1864 German Workers Association, design by Lasalle, NH, rated RR                                     | MB \$50 |
| 38. Mid-Lanark (Scotland) election fund, c.1880, top creased, RR   | E \$40  |
| 39. 1896 plagiarism of Keller's design for Stuttgart Electrical Show,<br>for Charles Letts of London, OG | E \$30  |
| 40. Porte-timbre, Swiss, c.1910 promoting temperance, OG   | E \$25  |
| 41. Travel, German stock design, Sequoia Nat'l Park (USA)  | \$10    |
| 42. Herman Tietz, store seized by Nazis became Hertie, NH  | \$6     |
| 43. Charles Dickens memorial (1912) US version, 2¢, rare   | E \$25  |
| 44. s'Gravenhage, Van de Ven plagiarism of Netherlands Centenary   | E \$12  |
| 45. Auto Club of Lucca, Italy, c. 1930, OG   | E \$25  |
| 46. Milano, Cerotto Mazza, great image by Mataloni. OG   | E \$25  |
| 47. Kurverein Silvaplano, Swiss mountain lakes region, printer: Hofer                                    | \$9     |
| 48. 1926 German Seeflug, promotes 'non-military' aviation, scarce, sm.flts                               | MB \$25 |
| 49. (1940) Swiss Week - mobilization, Pen SW5a   | \$5     |
| 50. (c.1950) re Race Relations, Rhodesia & Nyasaland, scarce   | \$10    |
| 51. Puget Sound Express, Bremerton, WA, c. 1915, NH  | \$6     |
| 52. Acme Fast Freight Service (train), NH  | \$6     |
| 53. 'Wait! You May Lose' (train)   | \$4     |
| 54. U.S. Marines, Service on Land and Sea (1940s), OG  | \$5     |

**Advertising, Topical**

- |   |        |
|---|--------|
| 55. Ludwig Hohlwein - Marco Polo Tee 'Serie 5', HO1.113.4s, rarity 20     | E \$15 |
| 56. same, but HO1.112.2, rarity 20  | E \$15 |
| 57. Hohlwein - horsemen, w/o text or imprint, HO1.57, rarity 50           | E \$30 |
| 58. Hohlwein - Tiergarten Nürnberg, classic, HO1.165, sl. wrinkles, RF 50 | E \$20 |
| 59. Hohlwein - Tierpark Hellabrunn, great design, HO1.171, sm. th, RF 40  | E \$20 |
| 60. Gastone Fiorini, Bologna, designed M. Dudovich, very nice             | E \$30 |
| 61. Sport-Zeitung magazine, depicting auto racer Boillot                  | E \$12 |





Lot 19

20

22

23

27

32

35

37

38

39

40

43

44

45

46

48

55

56

57







Lot 58

59

60

61

70

74

75

80

ex 86

ex 87

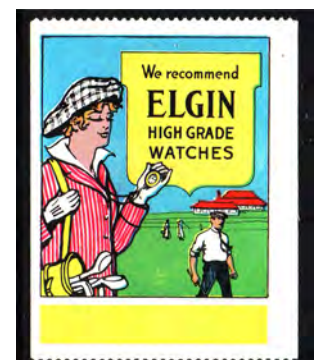
ex 91

ex 90

ex 94

ex 96

ex 98





62. Kaufhaus Brühl, children's clothing	\$10
63. Kinder ModeHaus Michael Meyer, signed L. Werner	\$8
64. Schaubek. stamp albums, owl, OG, sm. back flts.	\$7
65. Zebra Kachelglans (Dutch stove polish)	\$10
66. U.K., £1,000 guarantee for Sunlight Soap	\$4
67. s'Gravenhage, NL Indies import company, left edge faults	\$6
68. Nestle's Condensed Milk, in German	\$4
69. Thuere's Thee, horseman, OG, paper remnant	\$4
70. Amsterdam, C.L. van der Laan, bicycles, embossed, NH	E \$20

#### **Advertising, Topical - USA**

71. Railroad - Missouri Pacific Lines, die-cut, NH, minor wrinkles	\$6
72. Ives Toys, Locomotive Giant of 1915, a popular topic	\$9
73. Galveston (Texas) bathing beauty, corner copy, NH	\$8
74. Posters, Traung Label & Lithograph Co., San Francisco, NH	E \$15
75. Fire Hose, Boston Woven Hose & Rubber Co.	E \$15
76. Gugler Litho Press, Milwaukee, NH	\$8
77. Beach Nut Preserves, smiling child, NH	\$9
78. same, different child, s.e. bottom, cut close	\$5
79. Des Moines River Project - A new big lake (for fishing!), lt. bend, NH	\$6
80. Farm Journal, promoting for advertisers, NH corner copy, roulette	E \$12
81. R. S. Peck & Co., Hartford, Engravers - Printers	\$7
82. Gold Medal Flour (1921) old 'cradle' telephone, OG	\$10
83. Colorite, (dye for straw hats, etc.), OG, lt. thin, bends	\$6
84. Hellman Bank of Los Angeles, ca. 1915, OG	\$6
85. White Rose Ceylon Tea (Canada), NH	\$8

#### **Sets & collection lots**

86. 1900 Paris, Hess issue, type 1.14, 6 cpl. attractive Art Nouveau, OG, some gum bends & hinge remainders, rarity 60	E \$40
87. 1911 Germany, Type C1a-f, Deutscher Wettflug, air race, very scarce in any condition. The set of 6, mostly sound, a little soiling, nice.	MB \$140
88. 'ABC' set, S I D O L, 5 complete	E \$35
89. 'ABC' set, L A Z A R O L, 7 complete, artist set	MB \$75
90. Leichner cosmetics, Berlin, 6 pretty ladies, cpl., signed: Rumpf	E \$32
91. Munich, Art Series 1, 12 cpl., themes include horses, aviation, youth, not often found as a set, (4 x strips of 3), nice, 6 are NH	E \$65
92. Berlin Fashion, Artist set, block of 6, a little soiling, interesting	E \$45
93. F, Prochaska perfumes - 10 diff., signed Fabiano, gen. sound	E \$65
94. Lipton Tea, 6 cpl., 'largest tea house in the world', nice set, 5 are OG	E \$60
95. 1914 Leipzig Bugra exhibition, all 13 diff. languages, mixed OG, some difficult to find - Russian, China, etc. DEPS G1.18, CSC type 10	E \$70
96. New York, Blyn Shoes, complete set of 12, scarce, a great set	MB \$90
97. USA/France, 1948 World Champion boxing match, 3 diff. NH, Airmail	E \$18
98. Elgin Watches - group of 6, attractive images, incl. golf, fashion	E \$45
99. 1914 Barcelona, Social causes, 12 diff., cream paper, great images	E \$55
100. USA, mixed lot of 18 Western Union Telegraph advertising labels	\$5

\*\* Note: The Dated Event Poster Stamp (DEPS) worldwide database can be found online through a link at the web site: [www.posterstamplist.com](http://www.posterstamplist.com). If other catalog numbers or references appear and are unknown to you, please ask for advice by email. 'Rarity' values are from the Charles Kiddle series of catalogs; US 'rating' values are from N. Follansbee.



Lot 17

18

21

25

26

28

29

30

34

36

41

47

50

51

52

67

68

72

82

85

