

Mail Sale starting May 9, ending May. 24, 2026.

POSTER STAMP COLLECTORS CLUB

Net Price Mail/eMail/Phone SALE

Make your selections and contact Mr. Joe Ward who will confirm what's still available with total due. Phone or email contact produces the best and quickest results.

Email: sealward@aol.com - Phone: (316) 409-1220

Address: 1500 E. 10th Ave. Apt C7

Winfield, KS 67156

This Mail Sale

Items are first come, first served. We will be open to requests as of the official date of May 9.

Payment by check (no fee) or PayPal to: Sealward@aol.com (add 3% for fees).

Note items are not shown to exact size.

The US postal service has become a bit of a gamble with every mail-out and we are not sending a hard copy to anyone. As usual, this sale will also appear on the website in color, visible to everyone at www.posterstampcc.org, in addition to the email version sent out to members.

#66. A Catalogue of US Seals and Poster Stamps For Minor Events, 1890-1999, by Nicholas Follansbee; the 2nd Edition copyright 2022. A small amount of copies were printed in 2022 and some remain. Black/white, not illustrated, 100+ pages, spiral bound. They are available for \$20 including postage. As with the stamps, contact Joe Ward about availability.

Alphabetilately is available for reading; changes still in process.

As announced last year, the website "Alphabetilately" is now owned by the Poster Stamp Collectors Club. Anyone can go to www.alphabetilately.org and read this large and informative site. Please note that this address ends in ".ORG" not ".COM", and we do not own the .com domain name.

Unfortunately there are still some entries which do not display correctly, those are being fixed gradually (it is tedious), mostly by treasurer Ray Petersen, as his time permits.

A portion of Alphabetilately concerns regular postage stamp Philately, but even considering that, there is MUCH to see and read covering Cinderellas of the world, if one is a patient explorer.



01 1912 (R3) ungummed 35.00



02 1923 (R1) LH 15.00



03 1931 (R1) H, 5.00



04 1930 (R1) MNH, 5.00



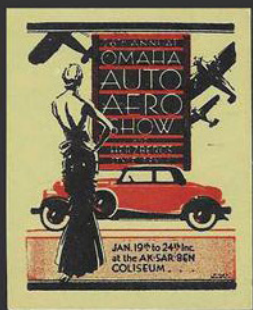
05 1924 (R1) H, 6.00



06 1926 (R1) LH, 8.00



07 1929 (R1) LH,



08 1931 (R1) M, 6.00



09 1910 (R1) ng, 10.00



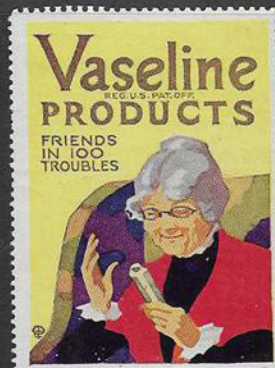
10 1932 (R1) LH, 6.00



011 National, ng, 4.50



012 lh once, 6.00



013 lh once, 6.00



014 ng, 5.00



015 ng, LL cor fault 3.00



016 Cole Phillips, ng, 6.00



017 hinge once, 6.00



018 ng, 4.00



019 lt hinge once, 6.00



020 set of trolley safety 1910s, mnh, 18.00



21 group mnh 15.00

22 green, h 10.00

23 brown, h 10.00

24 Depression, h 5.00



25 dk bwn, h 10.00

26 lt bwn, mnh 10.00

27 red, mnh 10.00

28 grn, h 8.00

29 purple, h 8.00

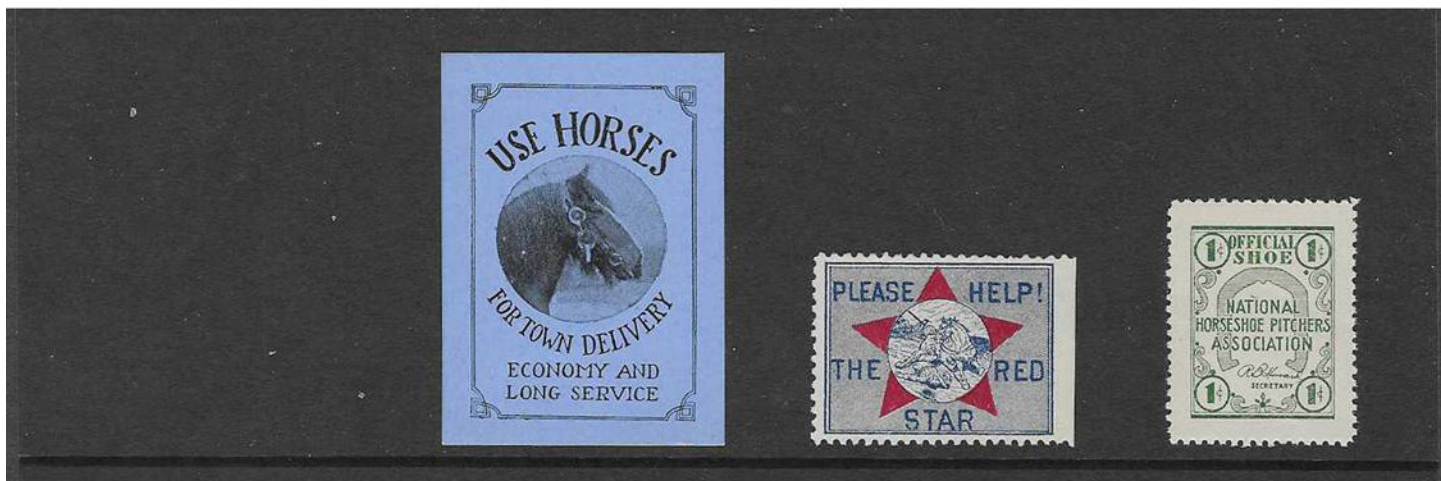


30 Delandre, ng 10.00

31 Hale, ng (nice example) 16.00

32 misprint, ng 20.00

33 'L.S.' var, ng 7.00



34 blue var., mnh, fresh 10.00

35 humane soc. ng 12.00

36 rarity, mnh 12.00



Top row: 37 w/o text, mnh 6.00 38 Hogan, lh, fresh 8.00
 2nd row: 39 w text, mnh 6.00 40 Holwein, ng, fresh 16.00
 3rd /4th row: 41 group mnh, fresh 25.00





42 Chippewa Lake Park, blue on silver, wrinkled lower left but still... 10.00



43 L&M Paint, mnh 6.00



44 Oppenheim, mnh 12.00



45 Heinz, hinge 6.00



46 Temperance '22, hinged 10.00



47 tires, mnh 10.00



48 tires 1914, mnh 12.00



49 set 2 ng, guessing '20s, 12.00



50 '21 Graphic Arts, mnh 15.00



51 WWI VFW m 10.00 52 mnh WWI 10.00 53 mnh WWI 10.00 54 WWI ng 4.00



55 WWI Jewish lh 6.00 56 WWI lh 15.00 57 WWI m, 10.00 58 '08 'RR' ng 17.00



59 Can. rare, h 18.00 60 emboss, m, 8.00 61 Can. scarce, ng, 10.00 62 emboss, m, 6.00



63 YMCA (3 var.) 100 yrs, h, 10.00 64 war, ng 7.00 65 Delan., ng 8.00